

fischer &
frichtel



A Homebuilding Legacy Since 1945



MANOR 3-CAR COLLECTION

THE WINSLOW

2-STORY

3 Beds | 2.5 Baths | 3 Car Garage | 2,168 sq ft

*The elevations on this brochure are an artist's conception and may vary slightly from actual construction.



MANOR 3-CAR COLLECTION

THE WINSLOW

2-STORY

3 Beds | 2.5 Baths | 3 Car Garage | 2,168 sq ft

ELEVATION OPTIONS



Elevation I



Elevation II



Elevation III



Elevation IV



Elevation V

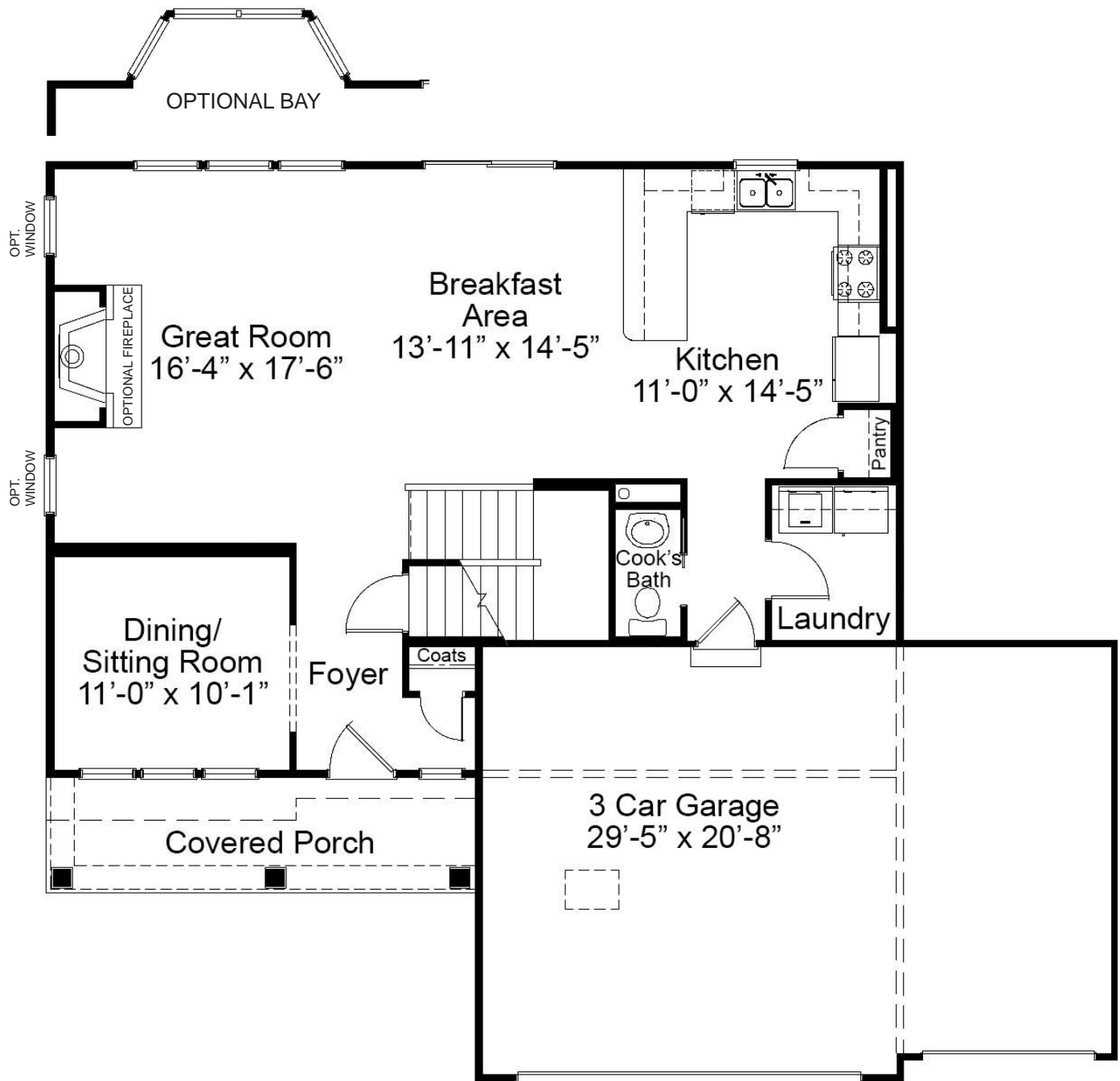


Elevation VI



Please be sure to review actual blueprints with Community Sales Manager for complete details. Fischer & Frichtel Custom Homes has a policy of continuous improvements of products and reserves the right to make improvements or changes on products and prices without notice.

WINSLOW FIRST FLOOR PLAN



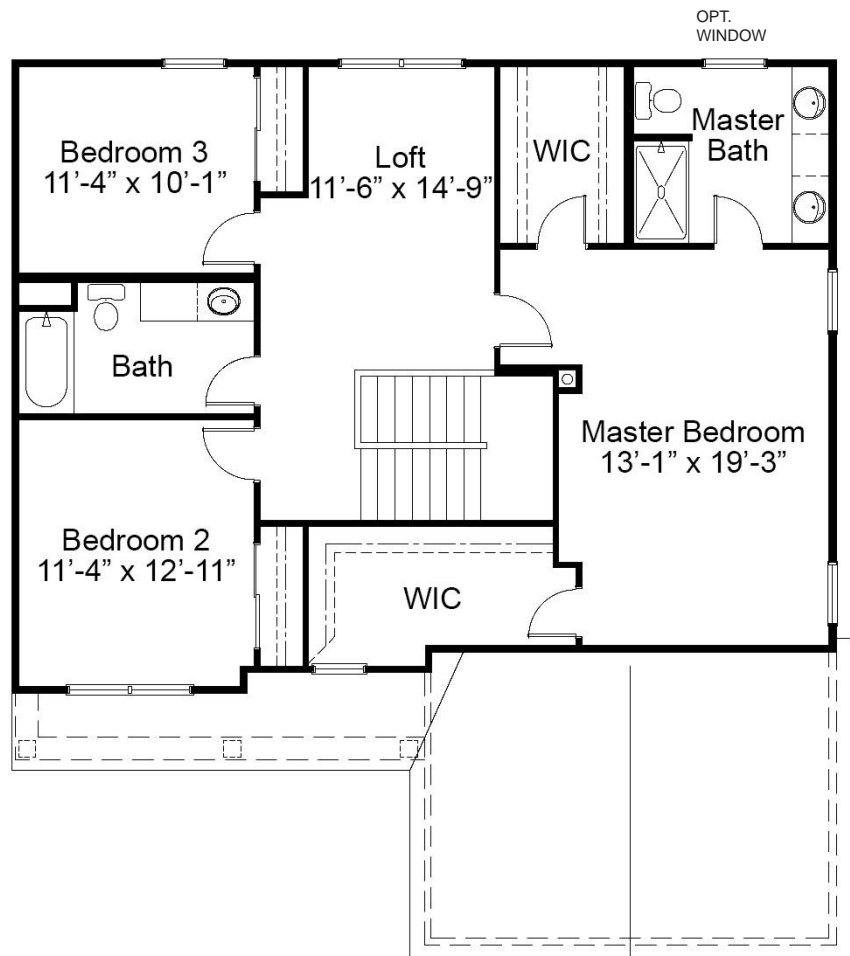
THE WINSLOW

The Winslow is a 2-story home with a spacious main floor living space and second floor loft. The first floor features a, private dining room, cook's bath, laundry room and expansive great room which flows into the kitchen and breakfast area. All of the bedrooms are located on the second floor. The master bedroom features two walk-in closets and a luxurious master bath with a walk-in shower. Two additional bedrooms share a hall bath. Customization options include a finished lower level, an additional bedroom and great room fireplace.

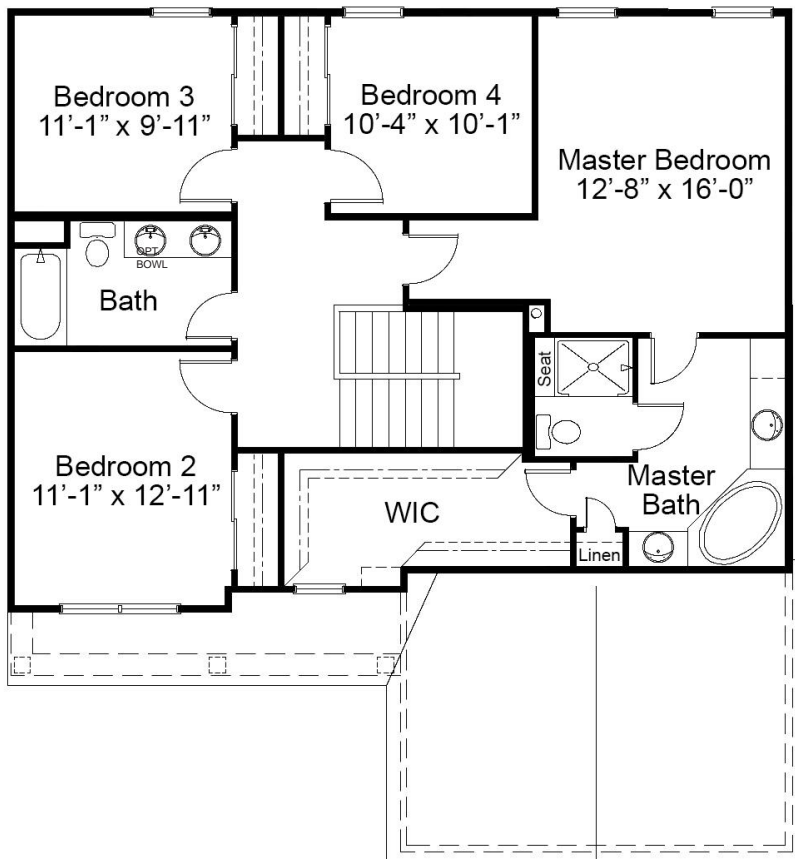


FandFHomes.com
Click on the Interactive Design Tool tab
to virtually explore your dream home

WINSLOW SECOND FLOOR PLAN



OPTIONAL 4 BEDROOM PLAN WITH LUXURY MASTER BATH





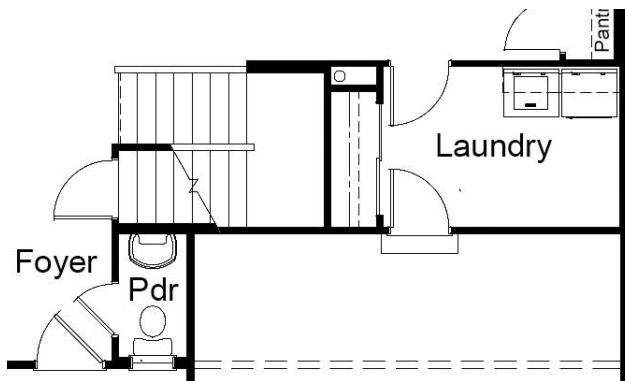
MANOR 3-CAR COLLECTION

THE WINSLOW

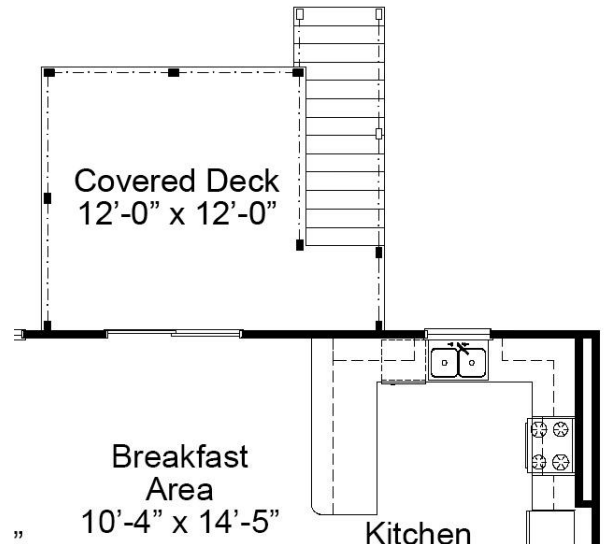
2-STORY

3 Beds | 2.5 Baths | 3 Car Garage | 2,168 sq ft

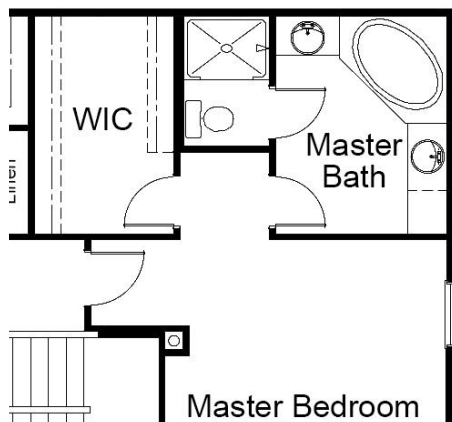
FIRST AND SECOND FLOOR ENHANCEMENT OPTIONS



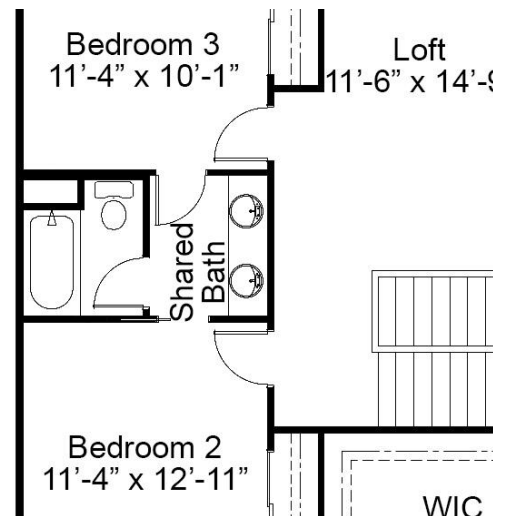
OPTIONAL LAUNDRY LAYOUT



OPTIONAL DECK/ COVERED PATIO



OPTIONAL LUXURY MASTER BATH



OPTIONAL SHARED BATH



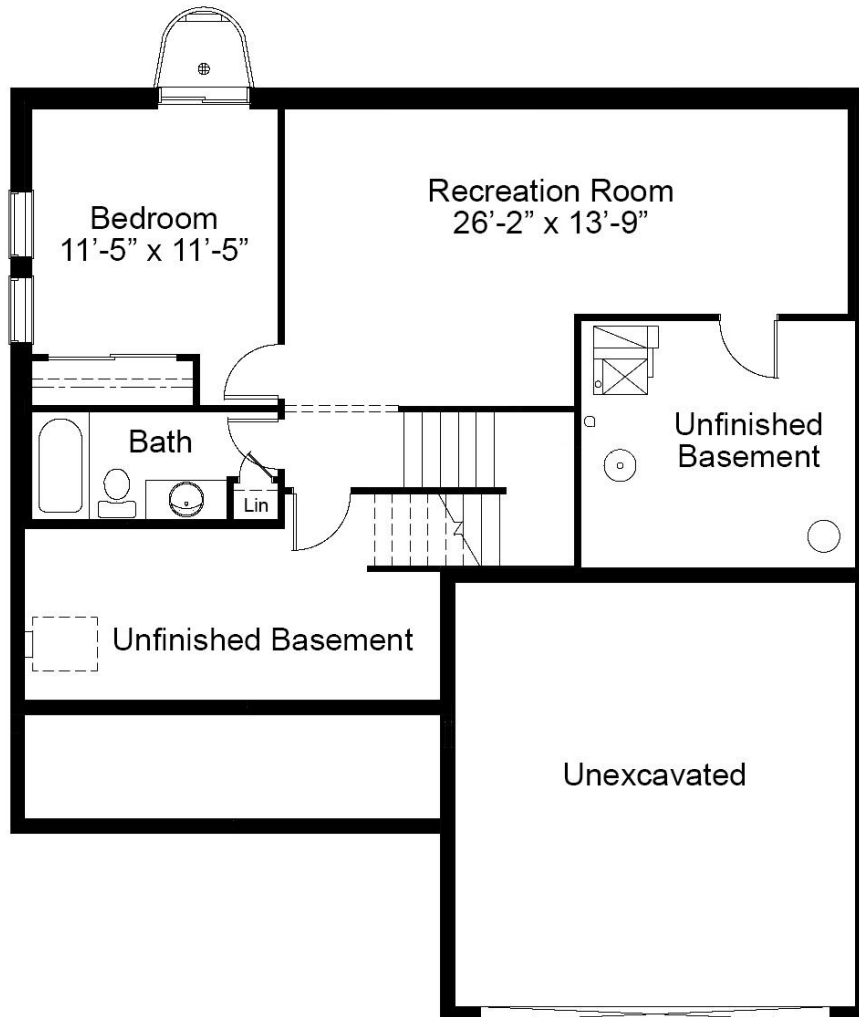
MANOR 3-CAR COLLECTION

THE WINSLOW

2-STORY

3 Beds | 2.5 Baths | 3 Car Garage | 2,168 sq ft

WINSLOW OPTIONAL FINISHED LOWER LEVEL



Floor plans may show options not included in the base price. All dimensions are approximate and may vary with elevation. Please be sure to review actual blueprints with Community Sales Manager for complete details. Fischer & Frichtel Custom Homes has a policy of continuous improvements of products and reserves the right to make improvements or changes on products and prices without notice.

REV 9-19-2025