

fischer &  
frichtel



A Homebuilding Legacy Since 1945



MANOR 3-CAR COLLECTION

# THE WHITEHALL RANCH

---

3 Beds | 2 Baths | 3 Car Garage | 1,819 sq ft

---

\*The elevations on this brochure are an artist's conception and may vary slightly from actual construction.





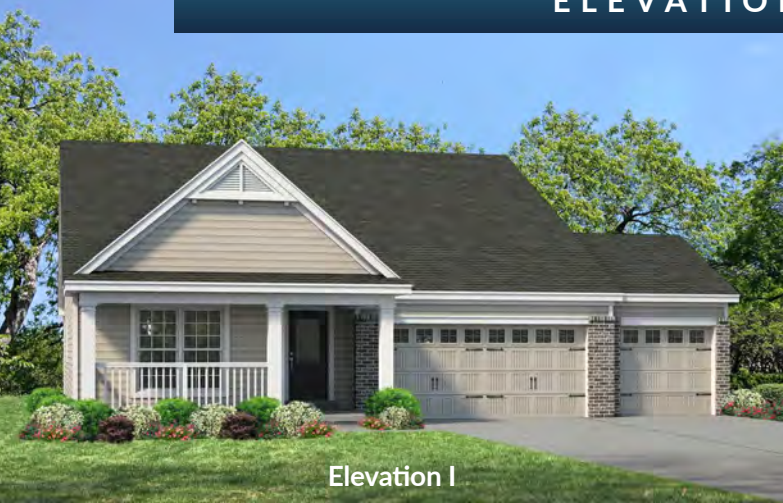
MANOR 3-CAR COLLECTION

# THE WHITEHALL

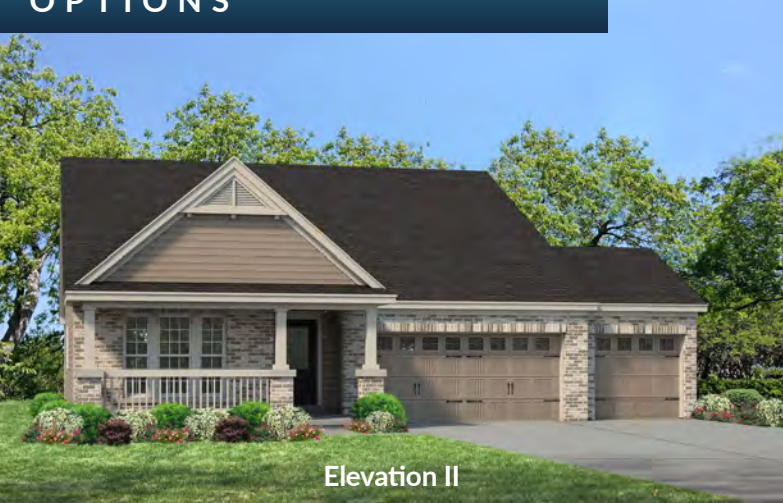
RANCH

3 Beds | 2 Baths | 3 Car Garage | 1,819 sq ft

## ELEVATION OPTIONS



Elevation I



Elevation II



Elevation III



Elevation IV



Elevation V

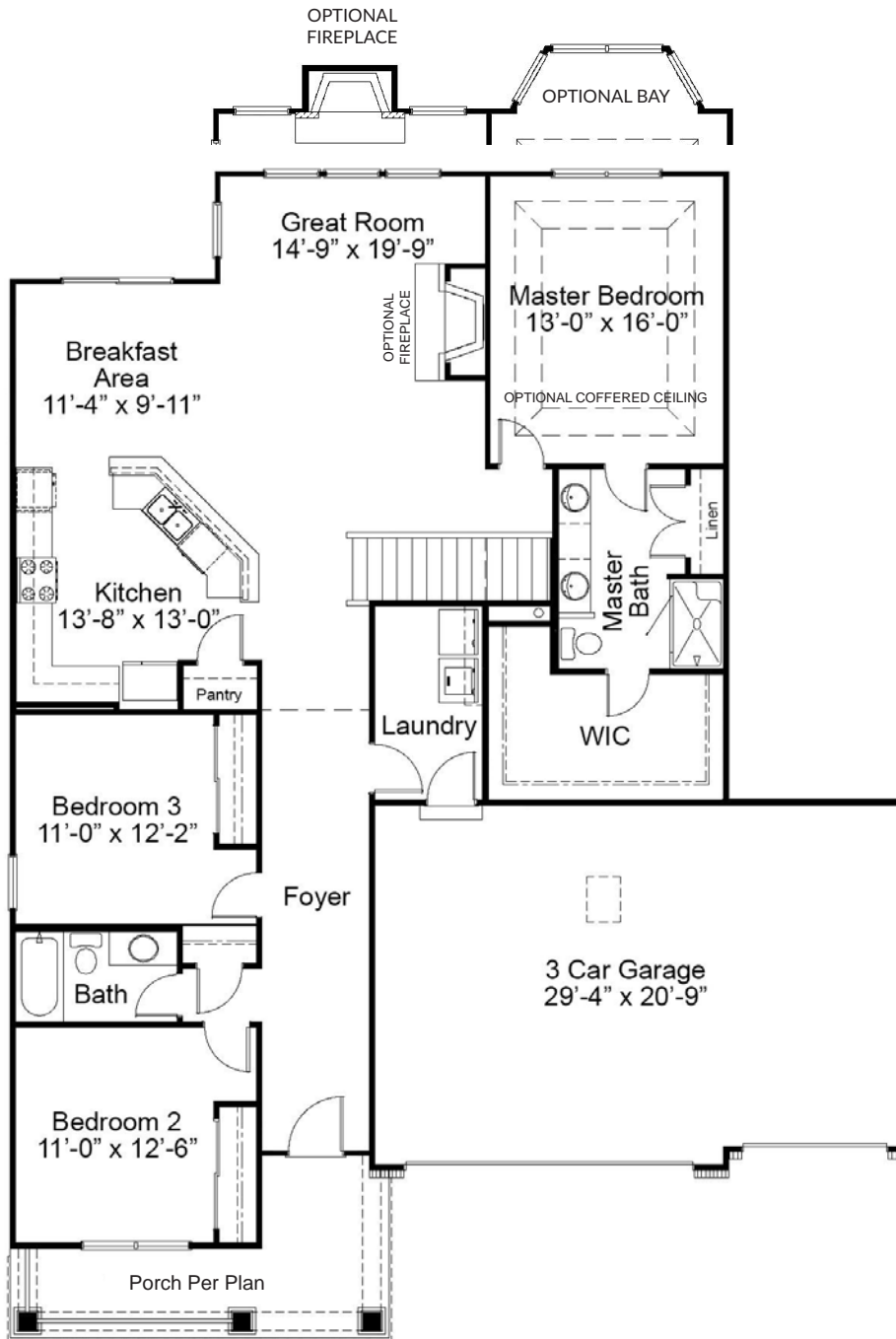


Elevation VI



Please be sure to review actual blueprints with Community Sales Manager for complete details. Fischer & Frichtel Custom Homes has a policy of continuous improvements of products and reserves the right to make improvements or changes on products and prices without notice.

# WHITEHALL FIRST FLOOR PLAN



## THE WHITEHALL

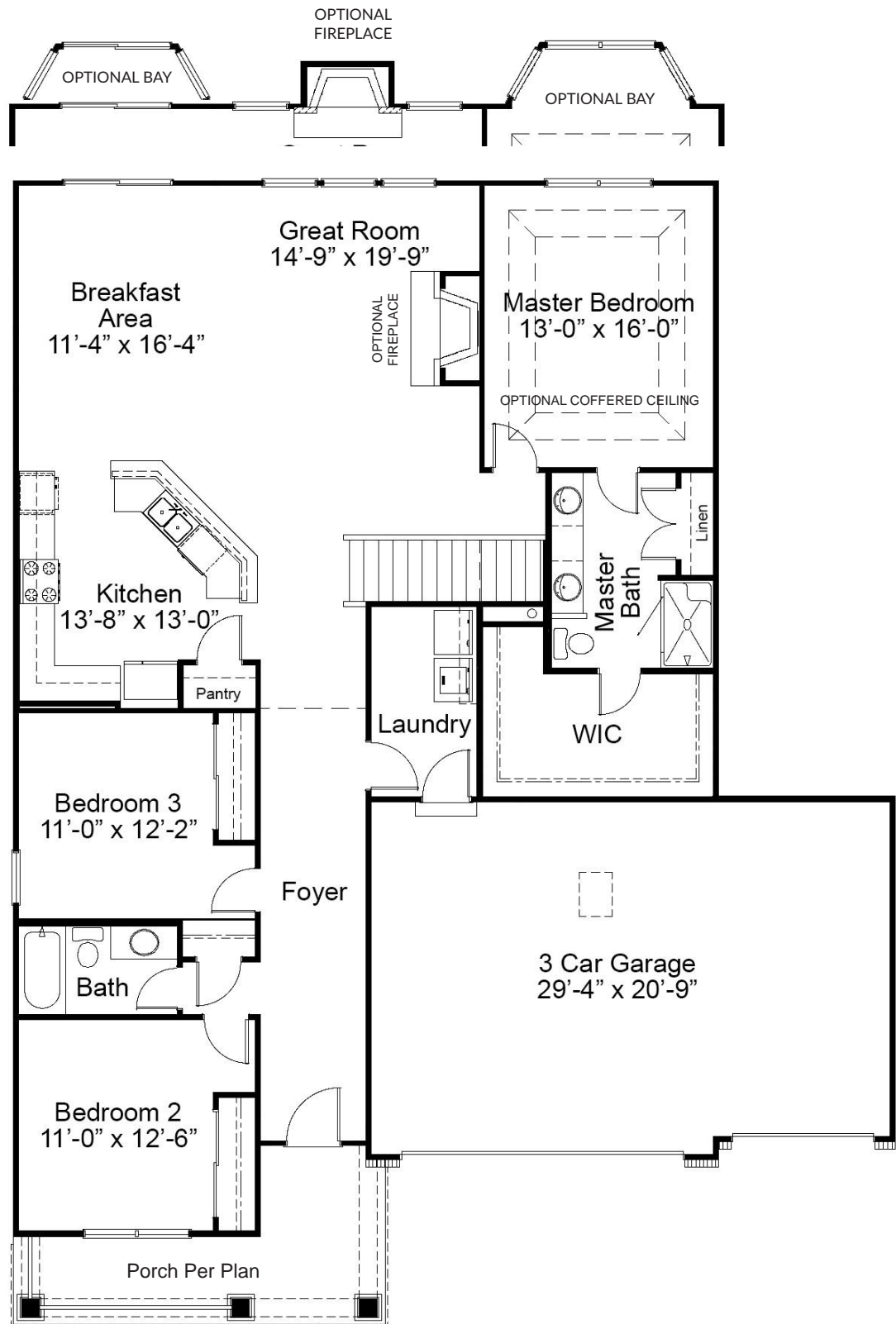
The Whitehall is a sizable ranch with a open living space, private master bath and two additional bedrooms and full bath. The kitchen opens up to a designated breakfast area and the great room, making the space perfect for relaxing and entertaining. Situated in the rear of the home is the master bedroom and bath with a large walk-in closet and linen closet. Customization options include a finished lower level, expanded breakfast area and powder room.



[FandFHomes.com](http://FandFHomes.com)  
Click on the Interactive Design Tool tab  
to virtually explore your dream home



# WHITEHALL OPTIONAL EXPANDED FLOOR PLAN





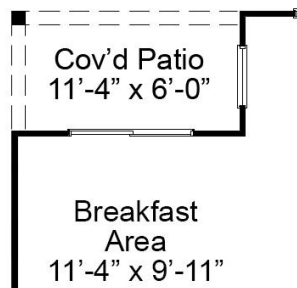
MANOR 3-CAR COLLECTION

# THE WHITEHALL

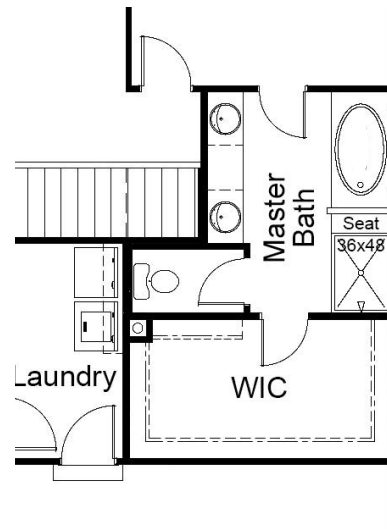
RANCH

3 Beds | 2 Baths | 3 Car Garage | 1,819 sq ft

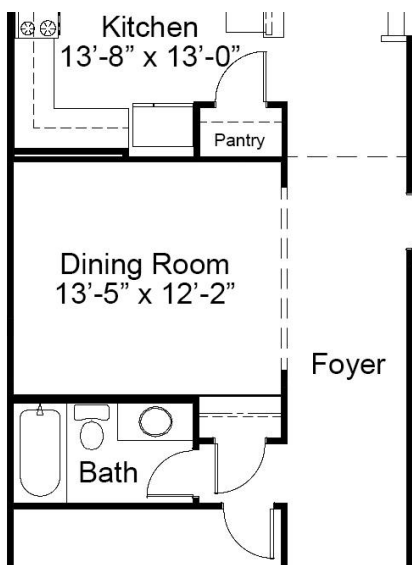
## FIRST FLOOR ENHANCEMENT OPTIONS



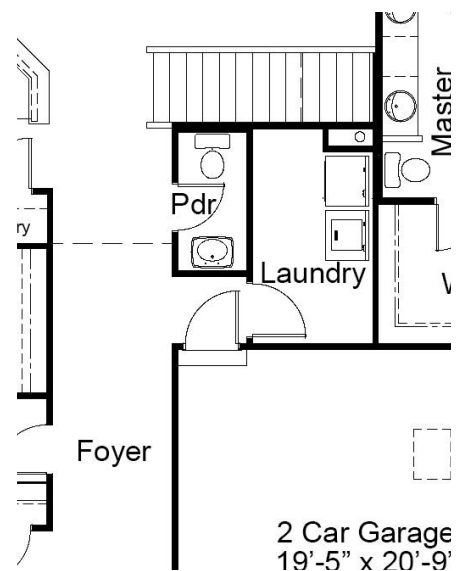
OPTIONAL COVERED PATIO



OPTIONAL LUXURY MASTER BATH



OPTIONAL DINING ROOM ILO  
BEDROOM 3



OPTIONAL POWDER ROOM

**fischer & frichtel**

A Homebuilding Legacy Since 1945

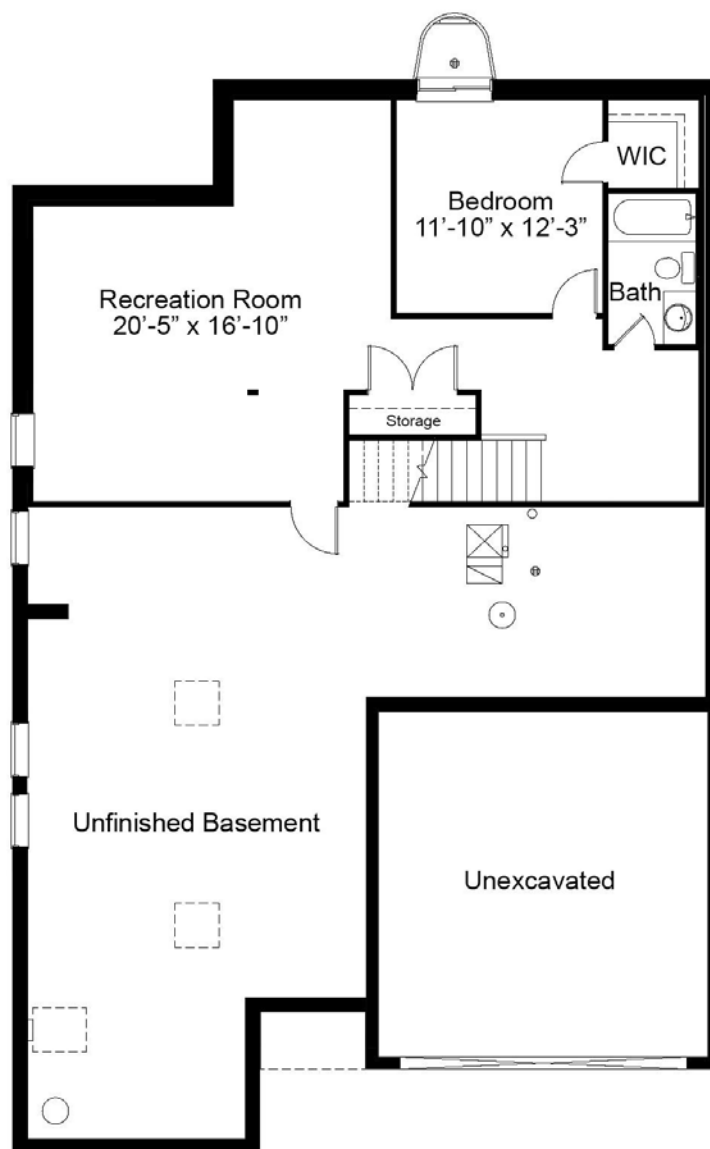
MANOR 3-CAR COLLECTION

# THE WHITEHALL

RANCH

3 Beds | 2 Baths | 3 Car Garage | 1,819 sq ft

## WHITEHALL OPTIONAL FINISHED LOWER LEVEL



Floor plans may show options not included in the base price. All dimensions are approximate and may vary with elevation. Please be sure to review actual blueprints with Community Sales Manager for complete details. Fischer & Frichtel Custom Homes has a policy of continuous improvements of products and reserves the right to make improvements or changes on products and prices without notice.

REV 9-19-2025