

FISCHER &  
FRICHTEL



*A Homebuilding Legacy Since 1945*



VISTA COLLECTION

# THE PARKVIEW II

1.5-STORY

---

4 Beds | 3.5 Baths | 4 Car Garage | 3,840 sq ft

---

\*The elevations on this brochure are an artist's conception and may vary slightly from actual construction.



FISCHER & FRICHTEL 



VISTA COLLECTION

# THE PARKVIEW II

1.5-STORY

4 Beds | 3.5 Baths | 4 Car Garage | 3,840 sq ft

FandFHomes.com



VISTA COLLECTION  
**THE PARKVIEW II**  
1.5-STORY

4 Beds | 3.5 Baths | 4 Car Garage | 3,840 sq ft



**ELEVATION OPTIONS**



Elevation III



Elevation IV



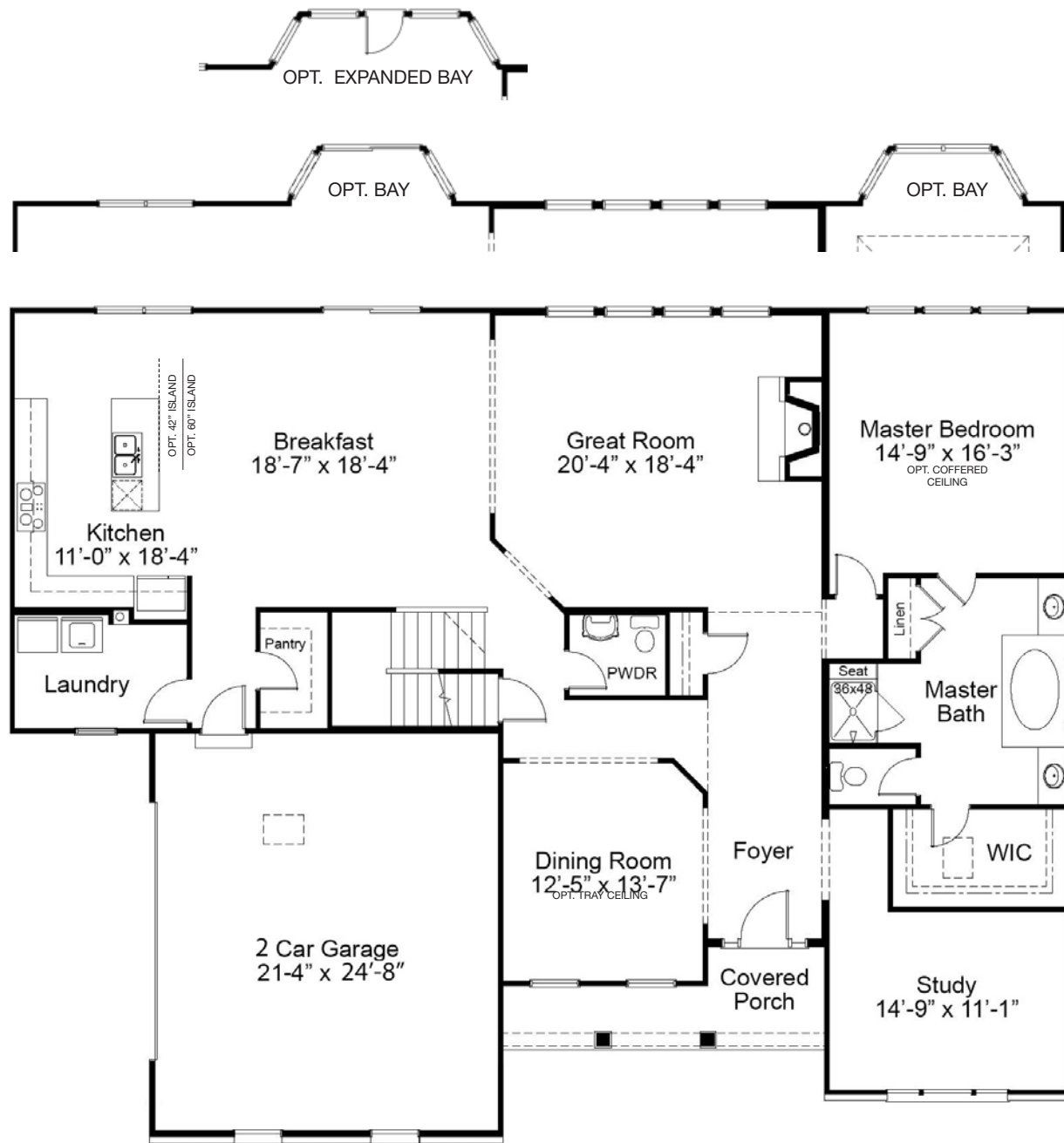
Elevation V

**Artist renderings are for illustrative purposes only. Please consult with Community Sales Manager for additional architectural features & materials included in Cedars Valley.**



Please be sure to review actual blueprints with Community Sales Manager for complete details. Fischer & Frichtel Custom Homes has a policy of continuous improvements of products and reserves the right to make improvements or changes on products and prices without notice.

# PARKVIEW II FIRST FLOOR PLAN



\*This floorplan includes a detached 2 car garage. Please consult with Community Sales Manager for more information.

## THE PARKVIEW II

The Parkview II is a large 1.5-story home with a lavish master suite on the main floor. The main floor also features an open concept kitchen, breakfast room and great room with fireplace, separate dining room and study, walk-in pantry and laundry room. On the second floor, there are three more sizable bedrooms, a loft and spacious bonus room. Also included is a dual zoned HVAC. Numerous options available for this fabulous home include a hearth room, a family foyer, 2-story ceiling in the great room, cook's bath and a second floor princess suite.



FandFHomes.com



VISTA COLLECTION  
**THE PARKVIEW II**  
 1.5-STORY

4 Beds | 3.5 Baths | 4 Car Garage | 3,840 sq ft

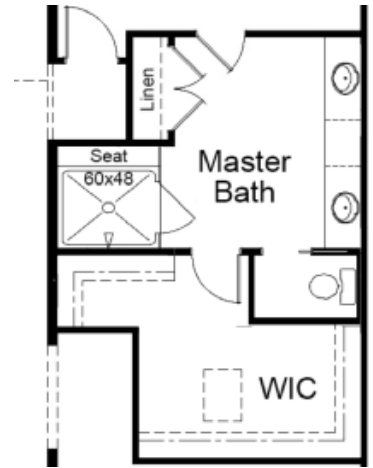
**FIRST FLOOR ENHANCEMENT OPTIONS**



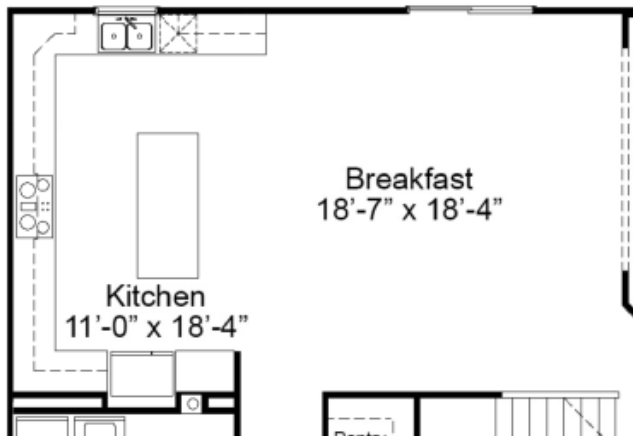
OPTIONAL LUXURY BATH 1



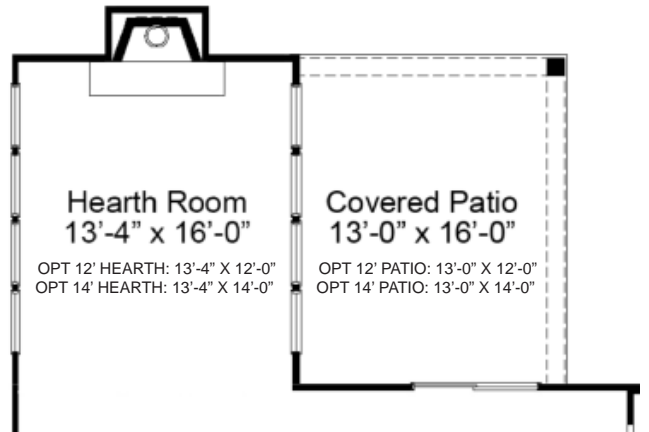
OPTIONAL LUXURY BATH 2



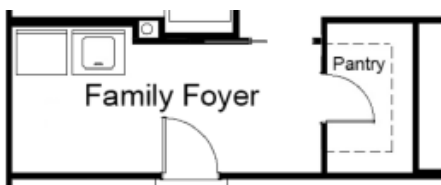
OPTIONAL SPA BATH



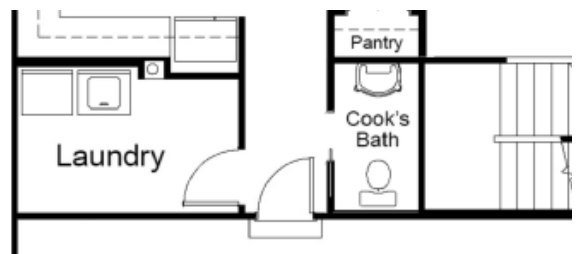
OPTIONAL GOURMET KITCHEN



OPTIONAL HEARTH ROOM/COVERED PATIO



OPTIONAL FAMILY FOYER



OPTIONAL COOKS BATH

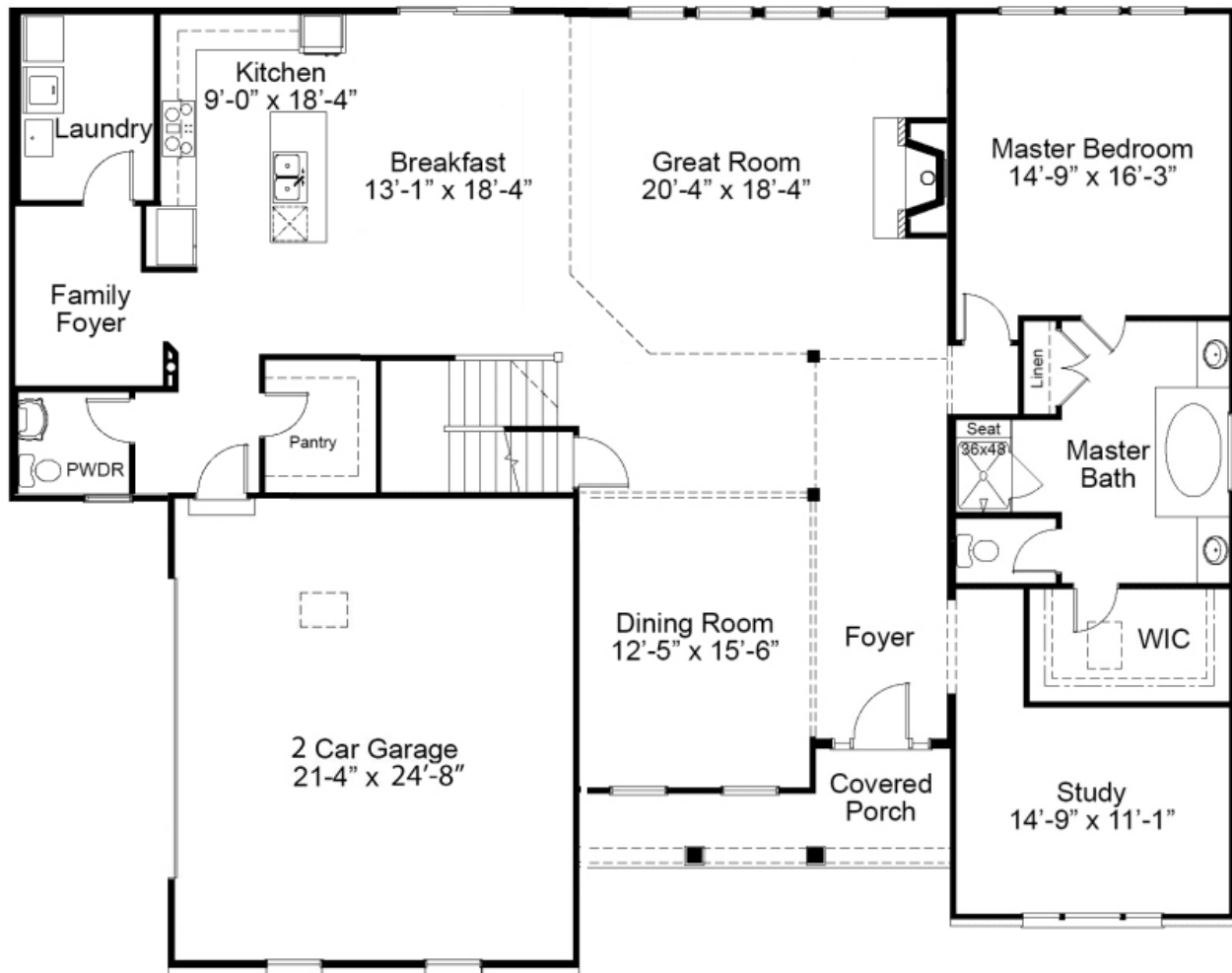
FISCHER &  
FRICHTEL



VISTA COLLECTION  
**THE PARKVIEW II**  
1.5-STORY

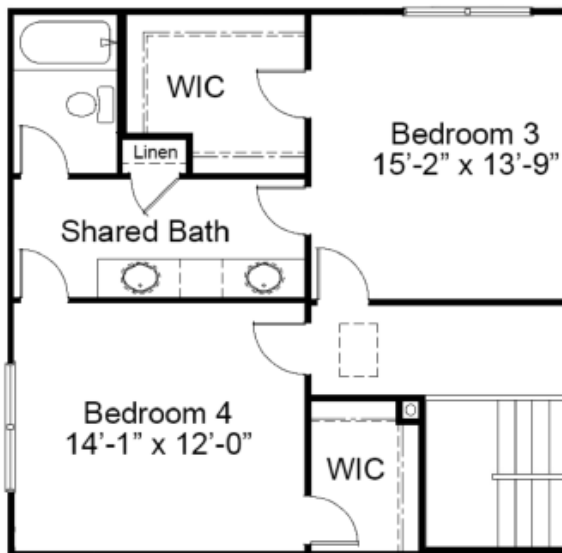
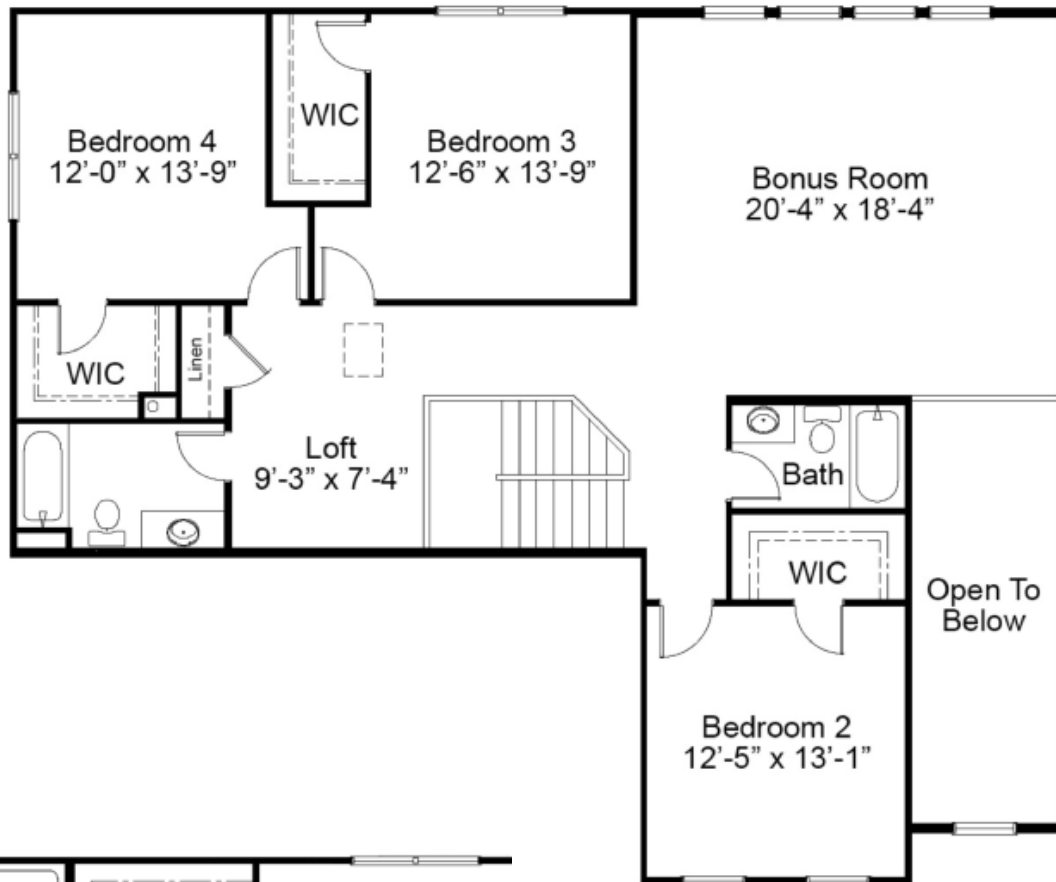
4 Beds | 3.5 Baths | 4 Car Garage | 3,840 sq ft

**ALTERNATE FIRST FLOOR PLAN**



\*This floorplan includes a detached 2 car garage. Please consult with Community Sales Manager for more information.

# PARKVIEW II SECOND FLOOR PLAN



OPTIONAL SHARED BATH

OPTIONAL STEP-UP BONUS ROOM



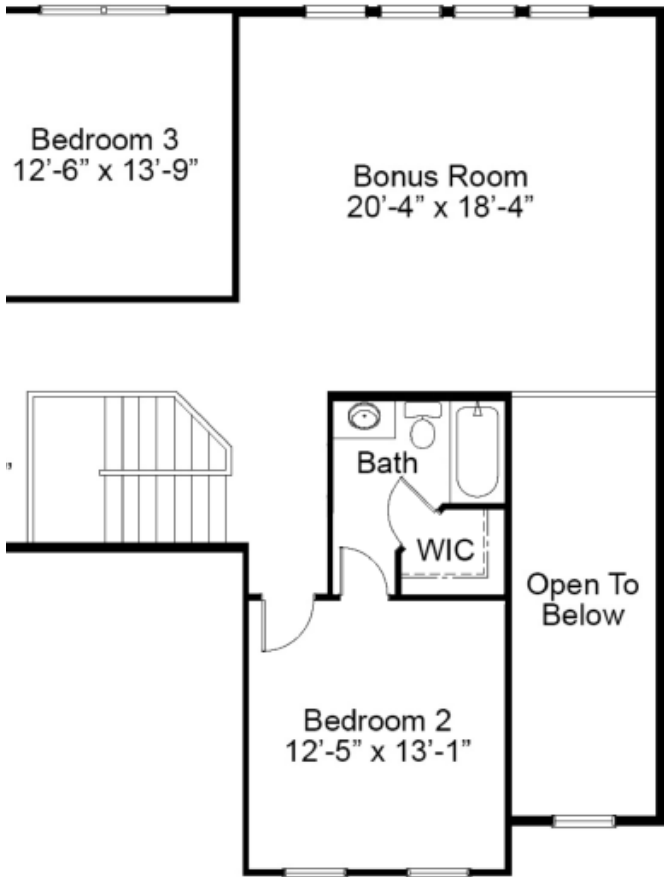


VISTA COLLECTION  
**THE PARKVIEW II**  
1.5-STORY

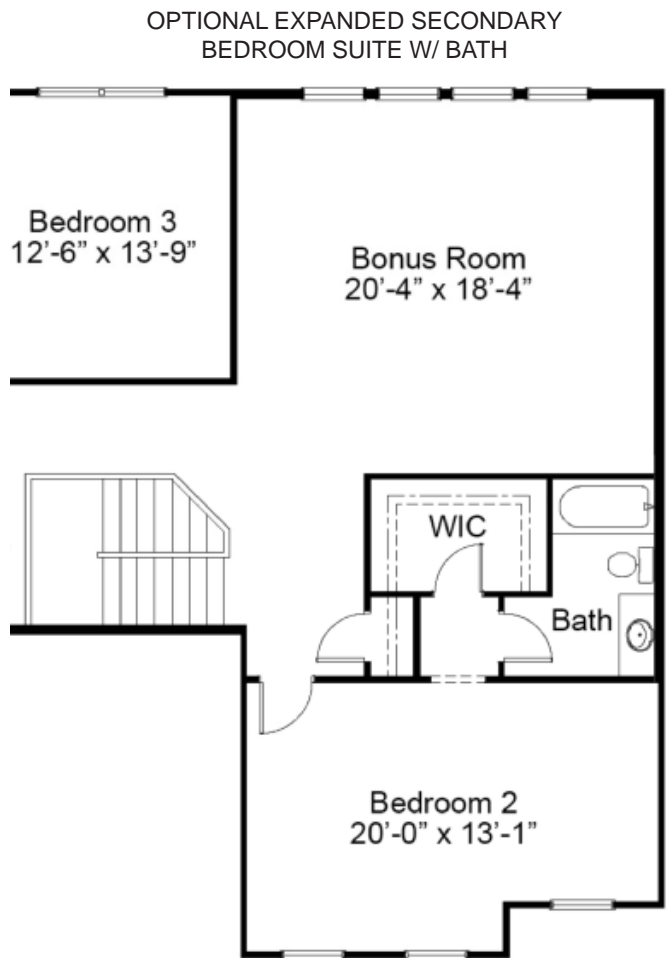
4 Beds | 3.5 Baths | 4 Car Garage | 3,840 sq ft



**SECOND FLOOR ENHANCEMENT OPTIONS**



OPTIONAL SECONDARY BEDROOM SUITE  
W/ BATH



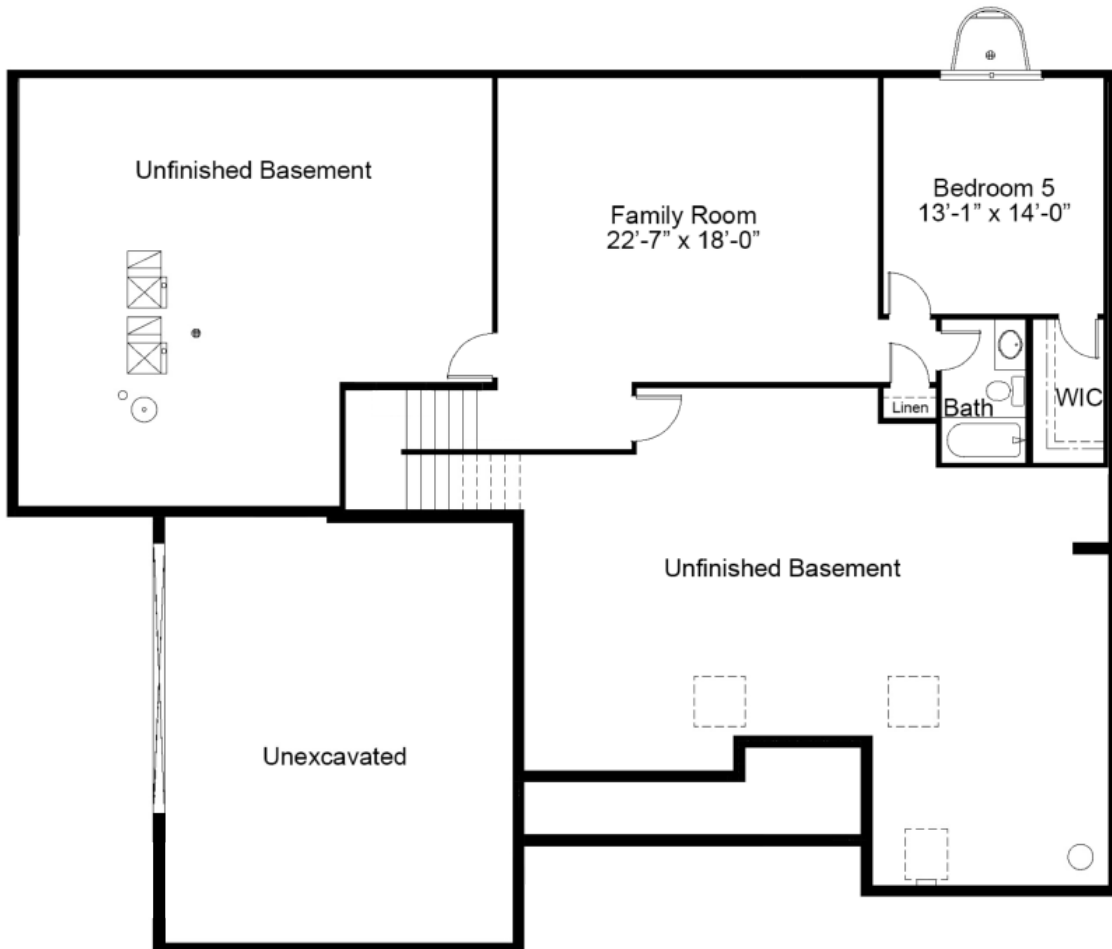


VISTA COLLECTION  
**THE PARKVIEW II**  
1.5-STORY

4 Beds | 3.5 Baths | 4 Car Garage | 3,840 sq ft



**PARKVIEW II OPTIONAL FINISHED LOWER LEVEL**



\*This floorplan includes a detached 2 car garage. Please consult with Community Sales Manager for more information.



Floor plans may show options not included in the base price. All dimensions are approximate and may vary with elevation. Please be sure to review actual blueprints with Community Sales Manager for complete details. Fischer & Frichtel Custom Homes has a policy of continuous improvements of products and reserves the right to make improvements or changes on products and prices without notice.