

**fischer &
frichtel**

A Homebuilding Legacy Since 1945



ESTATE COLLECTION

THE NANTUCKET RANCH

3 Beds | 2.5 Baths | 3 Car Garage | 3,328 sq ft

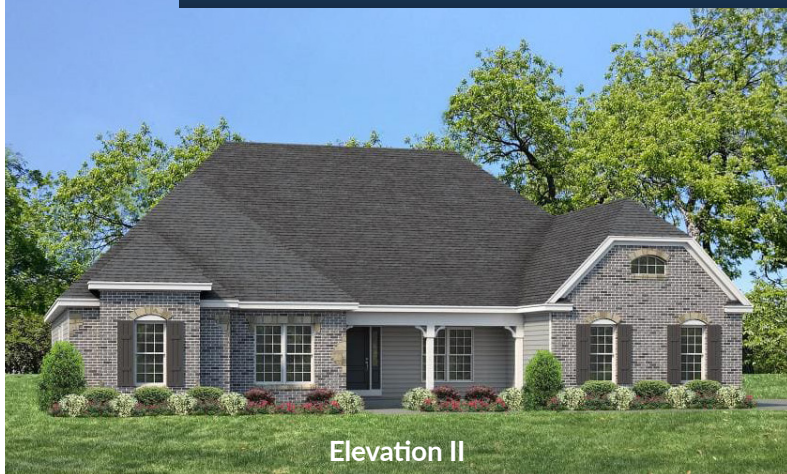
*The elevations on this brochure are an artist's conception and may vary slightly from actual construction.



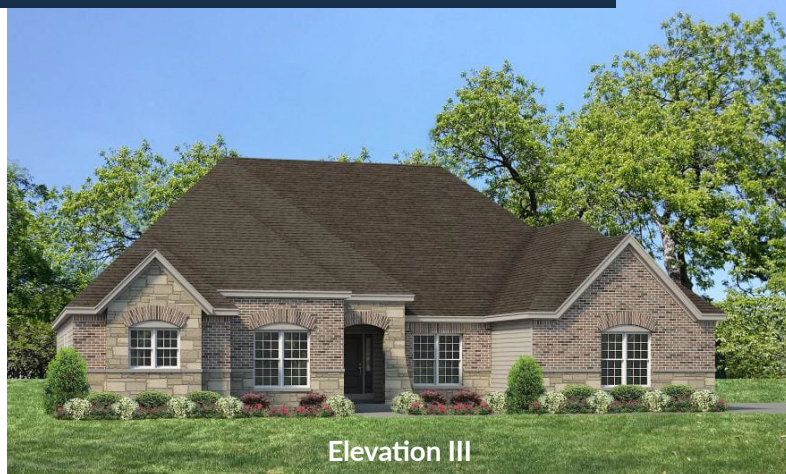
ESTATE COLLECTION
THE NANTUCKET
RANCH

3 Beds | 2.5 Baths | 3 Car Garage | 3,328 sq ft

ELEVATION OPTIONS



Elevation II



Elevation III



Elevation IV



Elevation V

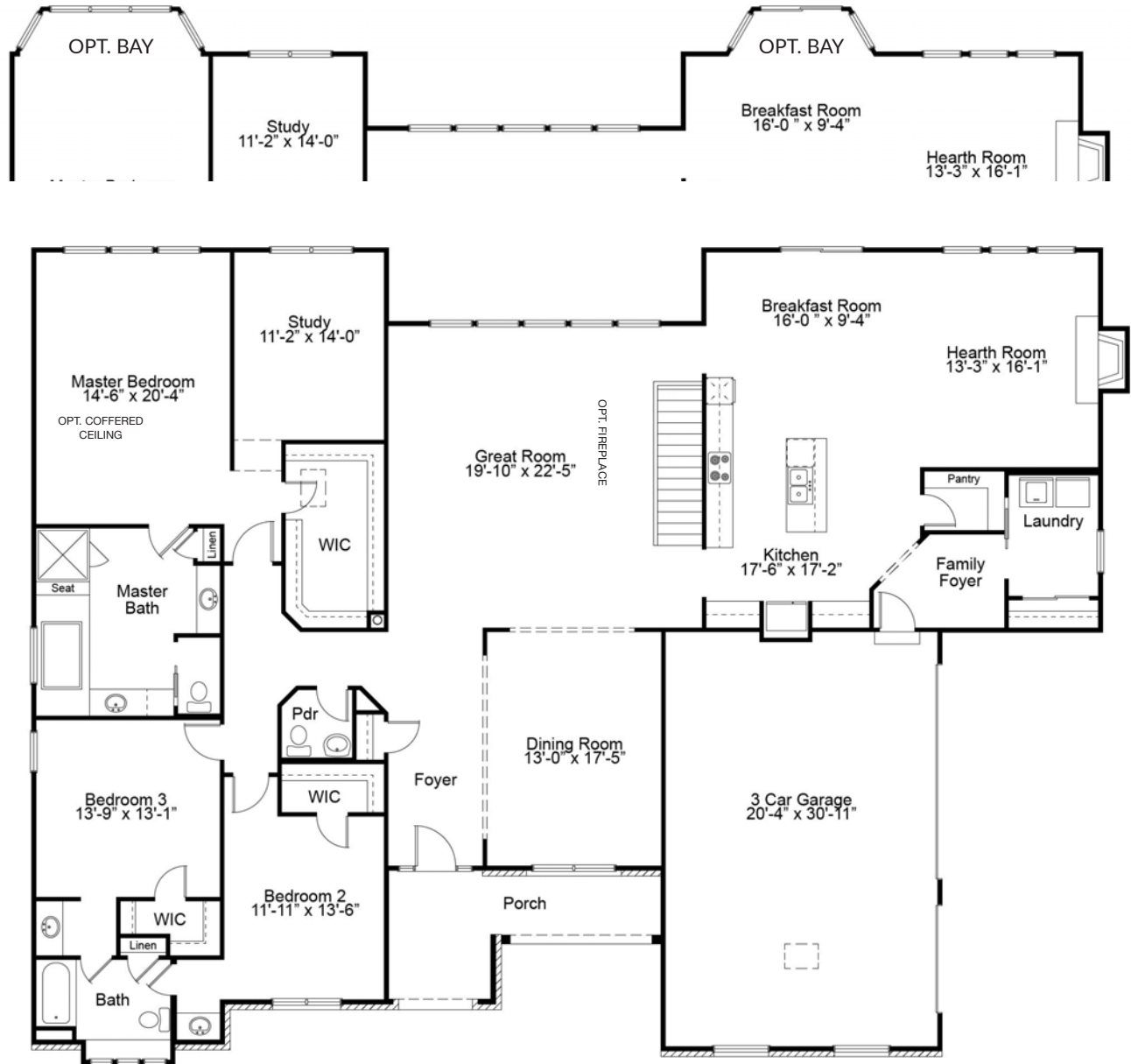


Elevation VI



Please be sure to review actual blueprints with Community Sales Manager for complete details. Fischer & Frichtel Custom Homes has a policy of continuous improvements of products and reserves the right to make improvements or changes on products and prices without notice.

NANTUCKET FIRST FLOOR PLAN



THE NANTUCKET

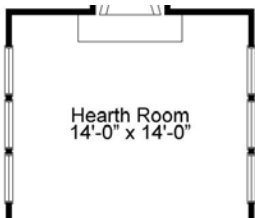
The Nantucket is a stunning ranch-style home with a spacious master suite and two generously sized secondary bedrooms. The open concept kitchen, breakfast room and hearth room is great for gatherings with family and friends, while a separate dining room, study and large laundry room provide maximum comfort and convenience. Options such as a finished lower level and additional fourth bedroom may be added to tailor this home for a larger family.



FandFHomes.com
Click on the Interactive Design Tool tab
to virtually explore your dream home

NANTUCKET OPTIONAL STAIR PLAN

OPT. HEARTH ROOM



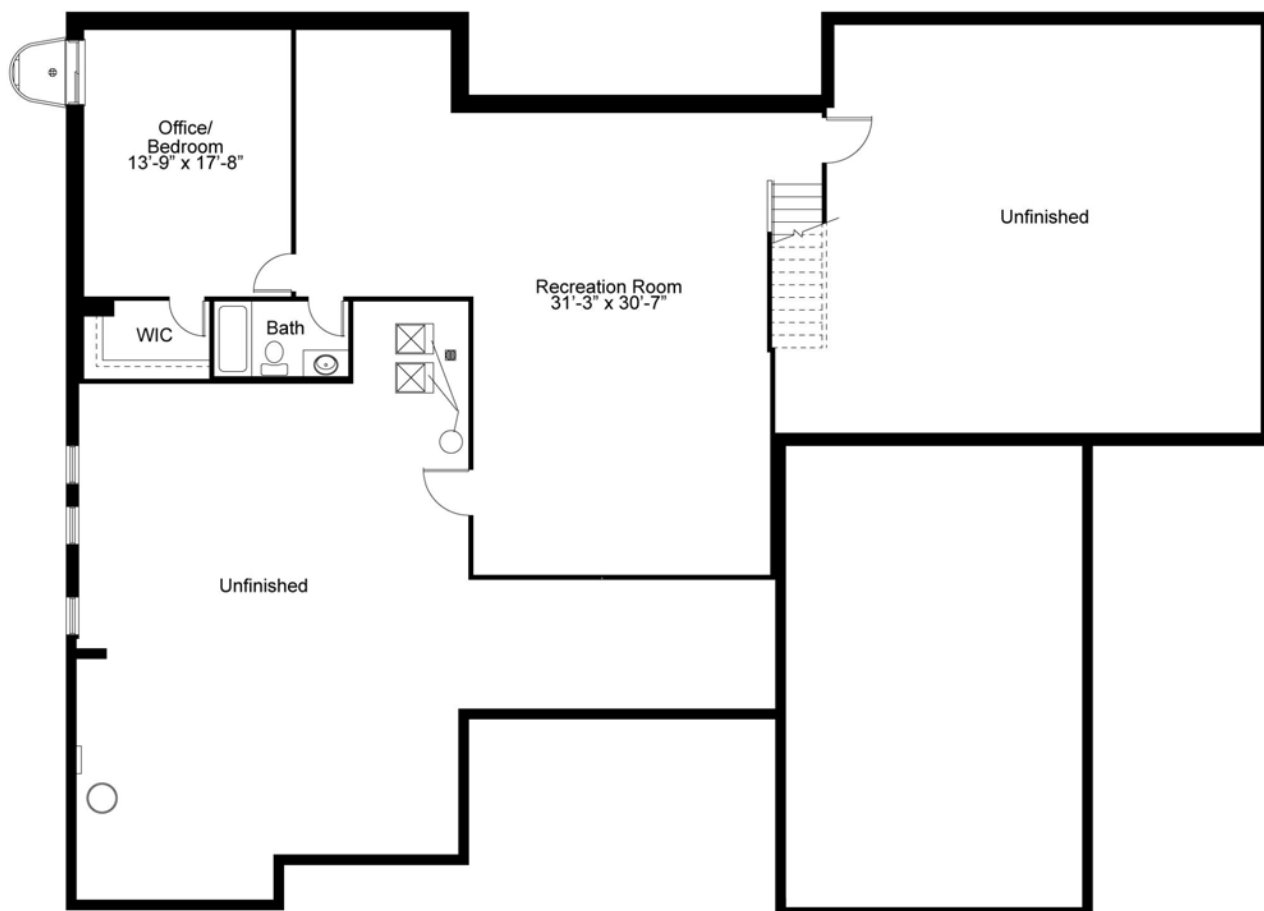
fischer & frichtel

A Homebuilding Legacy Since 1945

ESTATE COLLECTION
THE NANTUCKET
RANCH

3 Beds | 2.5 Baths | 3 Car Garage | 3,328 sq ft

NANTUCKET OPTIONAL FINISHED LOWER LEVEL



Floor plans may show options not included in the base price. All dimensions are approximate and may vary with elevation. Please be sure to review actual blueprints with Community Sales Manager for complete details. Fischer & Frichtel Custom Homes has a policy of continuous improvements of products and reserves the right to make improvements or changes on products and prices without notice.

REV 1-18-2024