

fischer & frichtel 

A Homebuilding Legacy Since 1945



TOWNHOME COLLECTION

THE FAIRGROUND

2-STORY

3 Beds | 2.5 Baths | 2 Car Garage | 1,474 sq ft

*The elevations on this brochure are an artist's conception and may vary slightly from actual construction.

**fischer &
frichtel**

A Homebuilding Legacy Since 1945

TOWNHOME COLLECTION

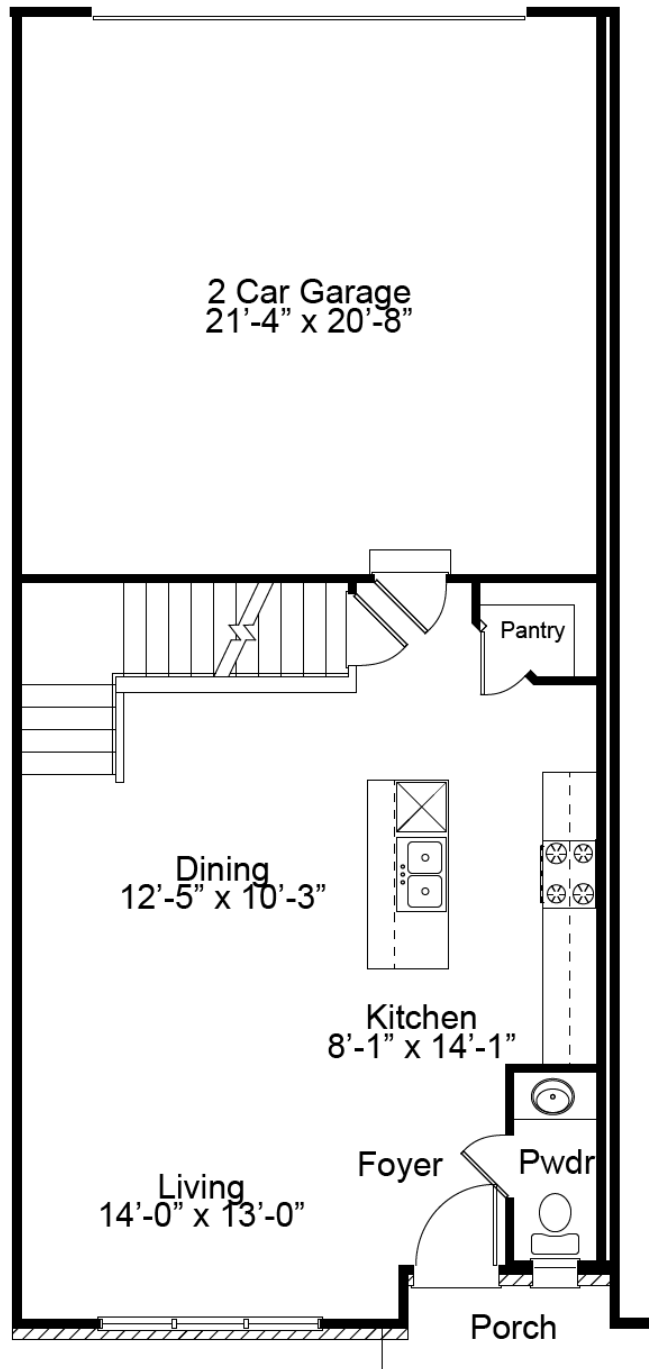
THE FAIRGROUND

2-STORY

3 Beds | 2.5 Baths | 2 Car Garage | 1,474 sq ft



FAIRGROUND FIRST FLOOR PLAN



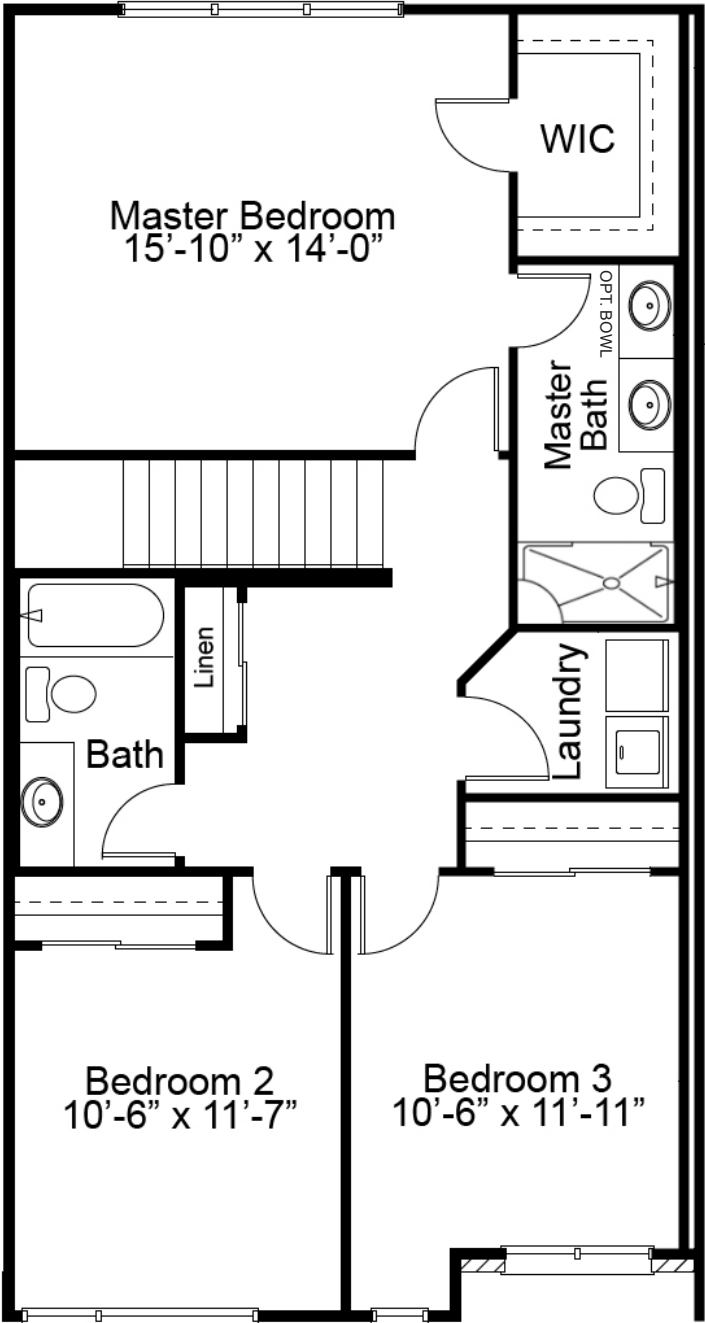
THE FAIRGROUND

The 2-story Fairground townhome is a 3 bedroom, 2.5 bath floor plan with 1,474 sq. ft. of living space, a 2-car, oversized garage and a basement. The main floor features an open concept kitchen, dining and living room with 9' ceilings and enlarged casement windows for additional natural light. There is also plank laminate flooring and a powder room on the main floor. The second floor features a large owner's suite with walk-in closet, laundry room, two additional bedrooms and a shared hall bath.



FandFHomes.com

FAIRGROUND SECOND FLOOR PLAN





TOWNHOME COLLECTION

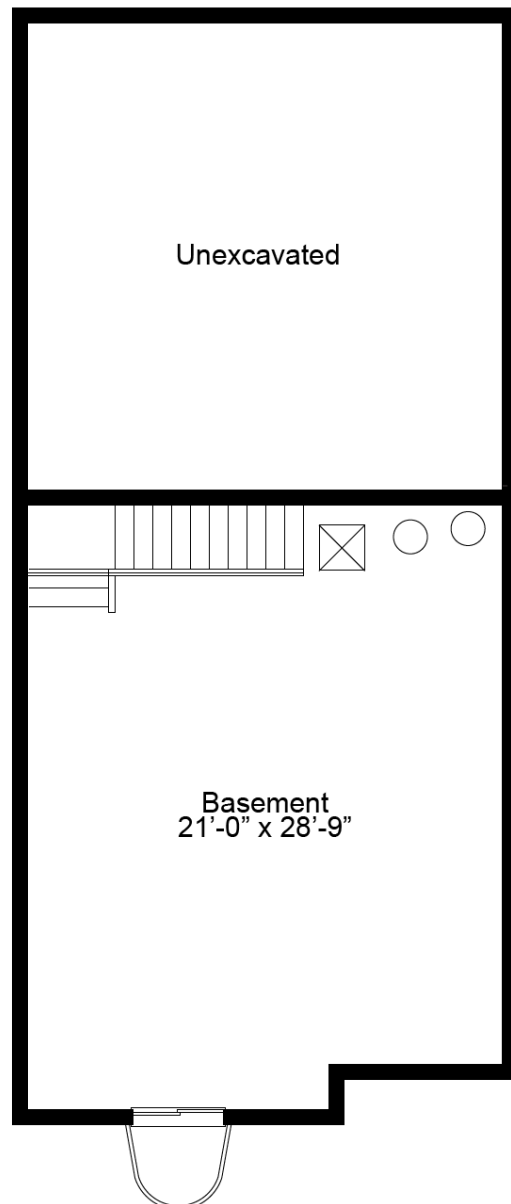
THE FAIRGROUND

2-STORY

3 Beds | 2.5 Baths | 2 Car Garage | 1,474 sq ft



FAIRGROUND OPTIONAL FINISHED LOWER LEVEL



Floor plans may show options not included in the base price. All dimensions are approximate and may vary with elevation. Please be sure to review actual blueprints with Community Sales Manager for complete details. Fischer & Frichtel Custom Homes has a policy of continuous improvements of products and reserves the right to make improvements or changes on products and prices without notice.

REV 4-11-23

**fischer &
frichtel**

A Homebuilding Legacy Since 1945

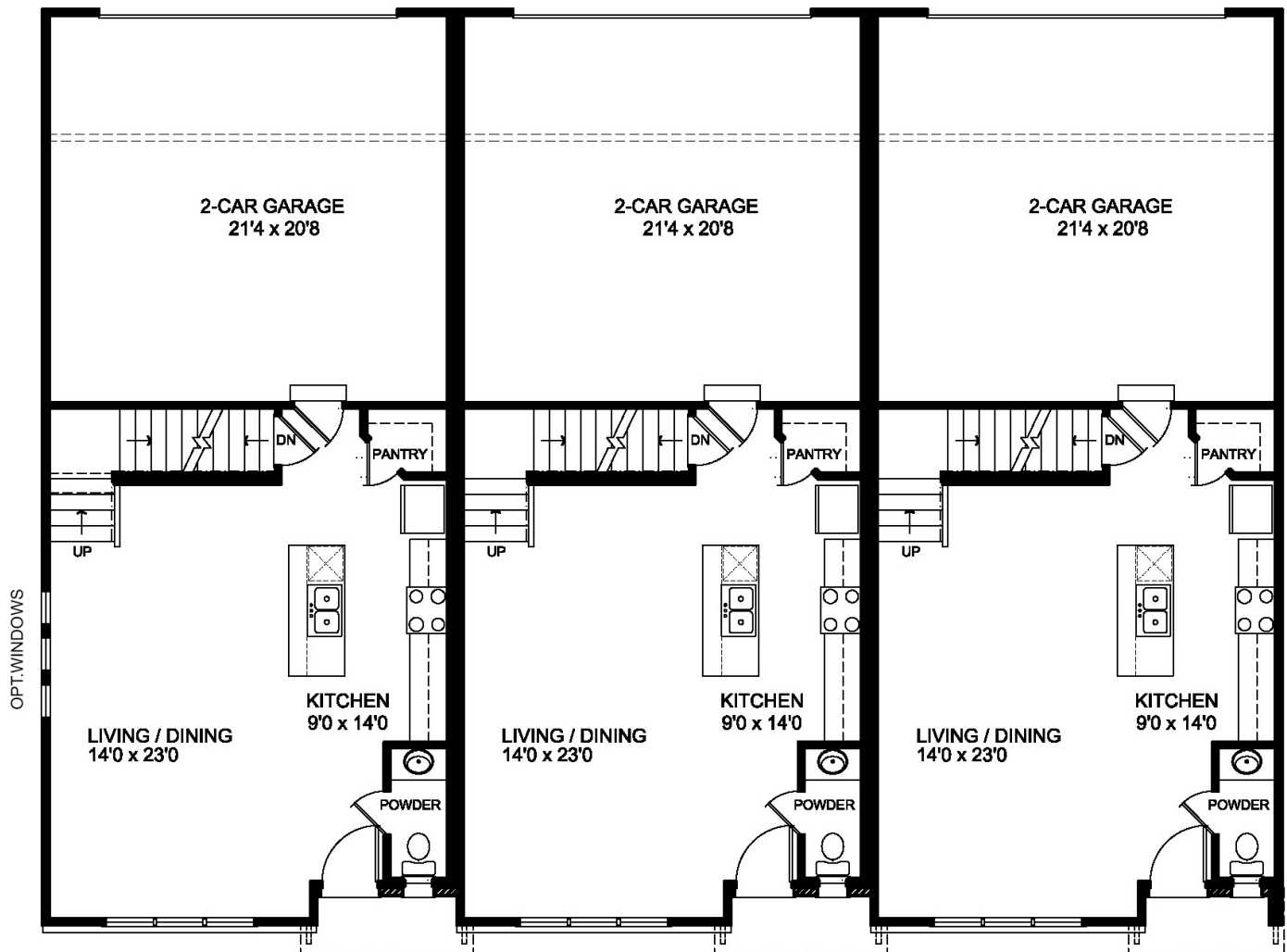
TOWNHOME COLLECTION

THE FAIRGROUND

2-STORY

3 Beds | 2.5 Baths | 2 Car Garage | 1,474 sq ft

FIRST FLOOR UNITS





TOWNHOME COLLECTION

THE FAIRGROUND

2-STORY

3 Beds | 2.5 Baths | 2 Car Garage | 1,474 sq ft

SECOND FLOOR UNITS

