

fischer & frichtel **4**

A Homebuilding Legacy Since 1945



TOWNHOME COLLECTION

# THE FAIRGROUND

## 2-STORY

---

3 Beds | 2.5 Baths | 2 Car Garage | 1,474 sq ft

---

\*The elevations on this brochure are an artist's conception and may vary slightly from actual construction.





TOWNHOME COLLECTION

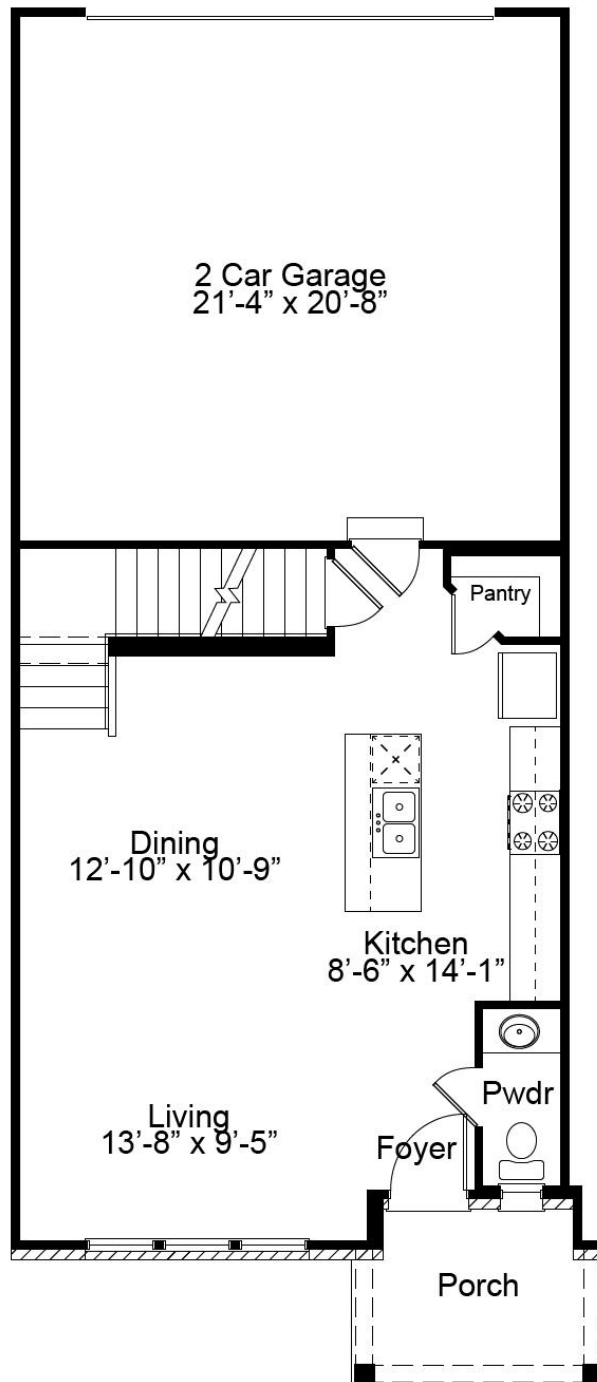
# THE FAIRGROUND

2-STORY

3 Beds | 2.5 Baths | 2 Car Garage | 1,474 sq ft



# FAIRGROUND FIRST FLOOR PLAN



## THE FAIRGROUND

The 2-story Fairground townhome is a 3 bedroom, 2.5 bath floor plan with 1,474 sq. ft. of living space, a 2-car, oversized garage and a basement. The main floor features an open concept kitchen, dining and living room with 9' ceilings and enlarged casement windows for additional natural light. There is also plank laminate flooring and a powder room on the main floor. The second floor features a large owner's suite with walk-in closet, laundry room, two additional bedrooms and a shared hall bath.



FandFHomes.com



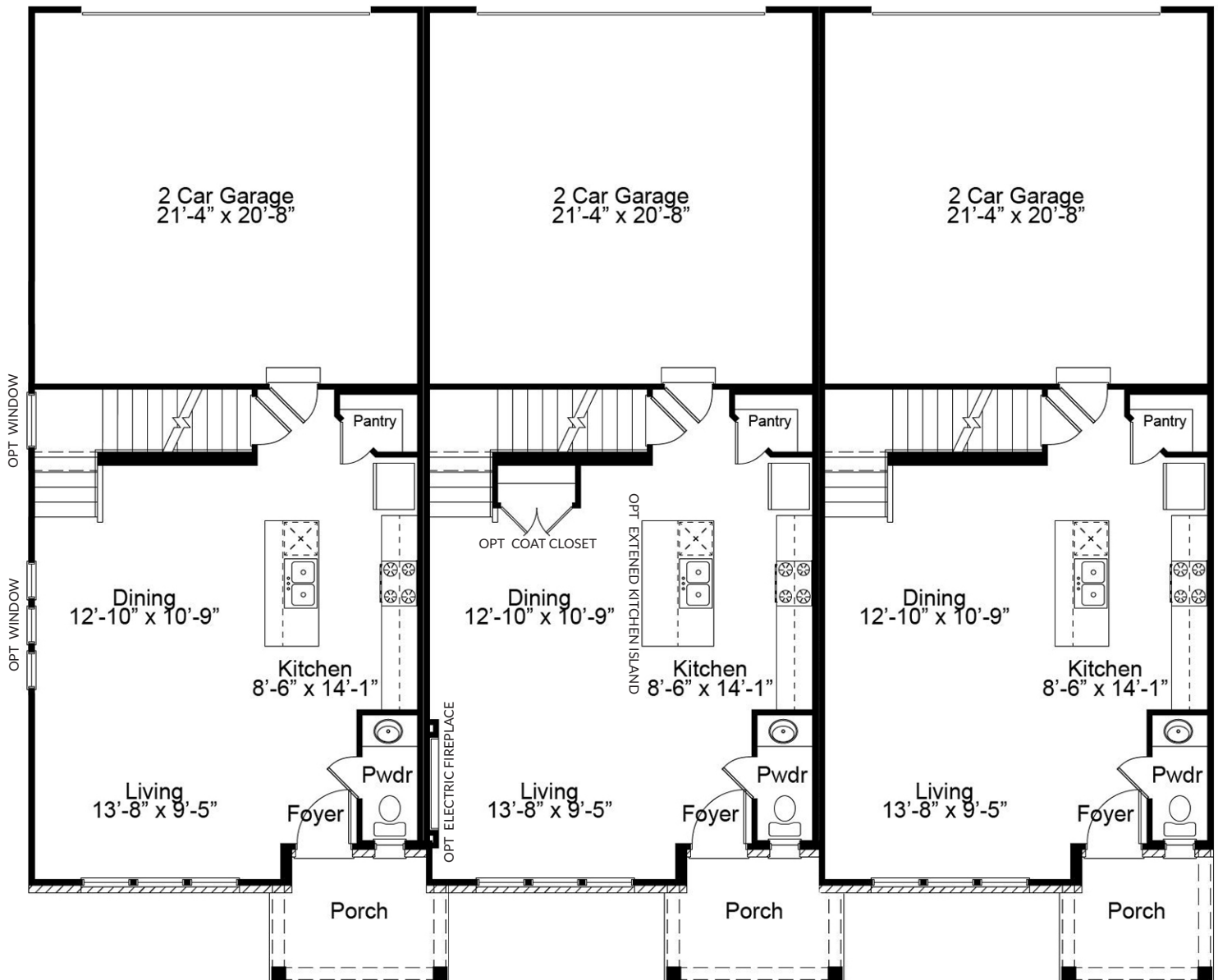
TOWNHOME COLLECTION

# THE FAIRGROUND

2-STORY

3 Beds | 2.5 Baths | 2 Car Garage | 1,474 sq ft

## FIRST FLOOR UNITS





TOWNHOME COLLECTION

# THE FAIRGROUND

2-STORY

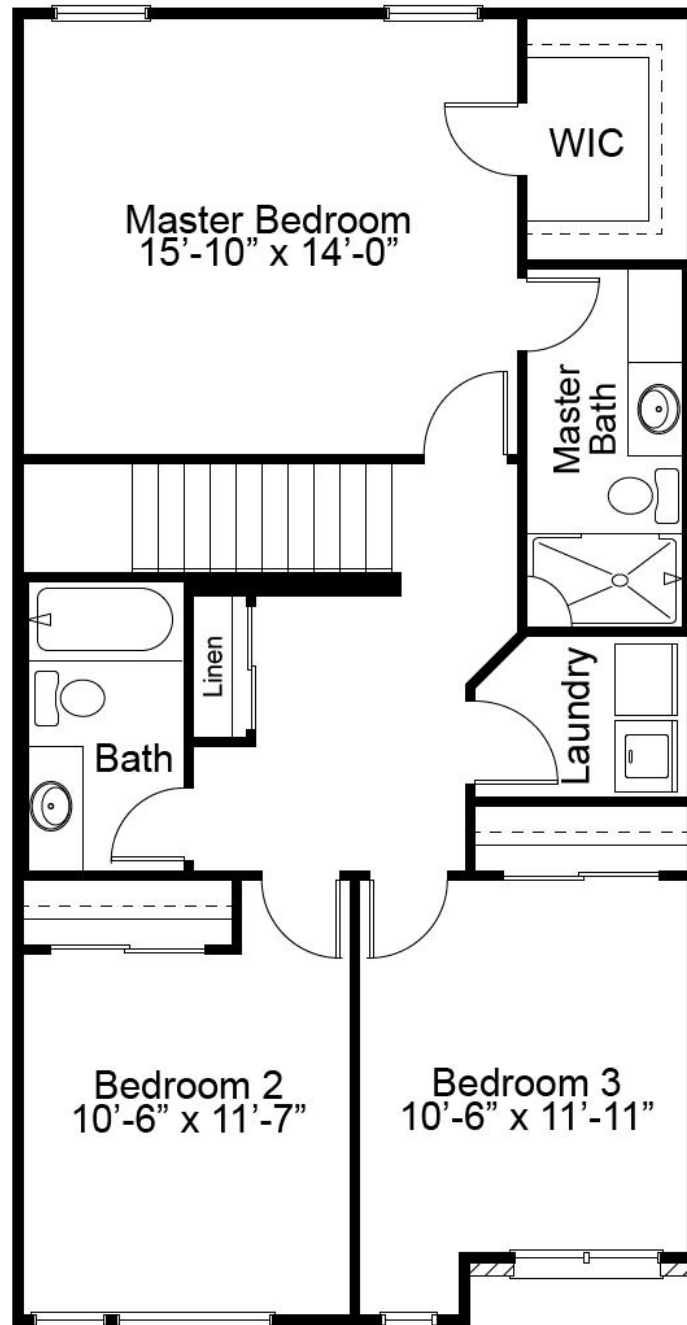
3 Beds | 2.5 Baths | 2 Car Garage | 1,474 sq ft

## SECOND FLOOR UNITS





# FAIRGROUND SECOND FLOOR PLAN



**fischer &  
frichtel**

A Homebuilding Legacy Since 1945

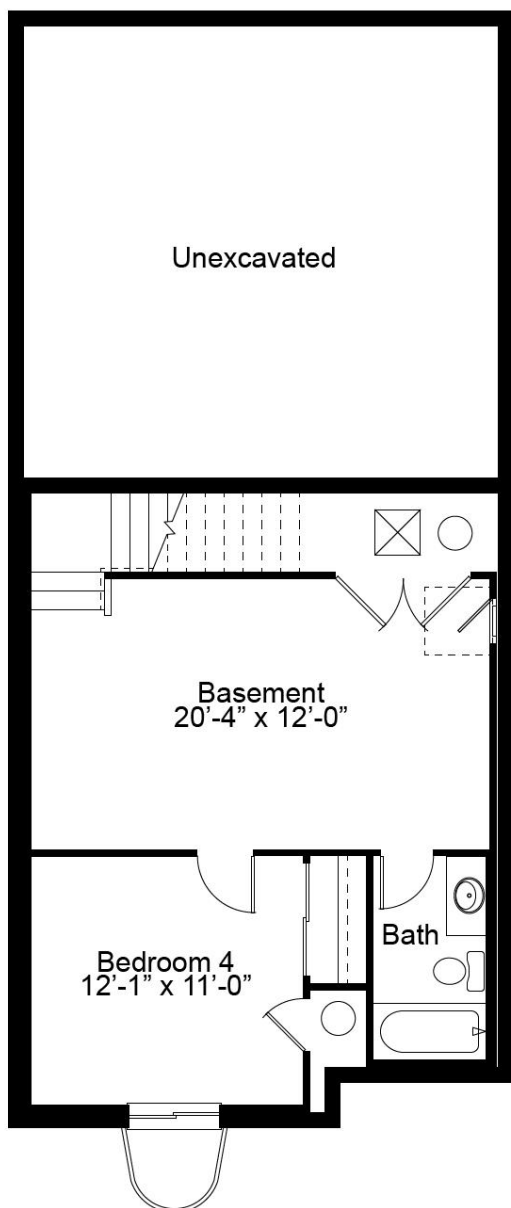
TOWNHOME COLLECTION

# THE FAIRGROUND

2-STORY

3 Beds | 2.5 Baths | 2 Car Garage | 1,474 sq ft

## FAIRGROUND OPTIONAL FINISHED LOWER LEVEL



Floor plans may show options not included in the base price. All dimensions are approximate and may vary with elevation. Please be sure to review actual blueprints with Community Sales Manager for complete details. Fischer & Frichtel Custom Homes has a policy of continuous improvements of products and reserves the right to make improvements or changes on products and prices without notice.

REV 5-30-25