

fischer & frichtel 

A Homebuilding Legacy Since 1945



HERITAGE COLLECTION

THE WOODSIDE RANCH

3 Beds | 2 Baths | 3 Car Garage | 2,480 sq ft

*The elevations on this brochure are an artist's conception and may vary slightly from actual construction.



HERITAGE COLLECTION
THE WOODSIDE
RANCH

3 Beds | 2 Baths | 3 Car Garage | 2,480 sq ft

ELEVATION OPTIONS



Elevation I



Elevation II



Elevation III



Elevation IV



Elevation V

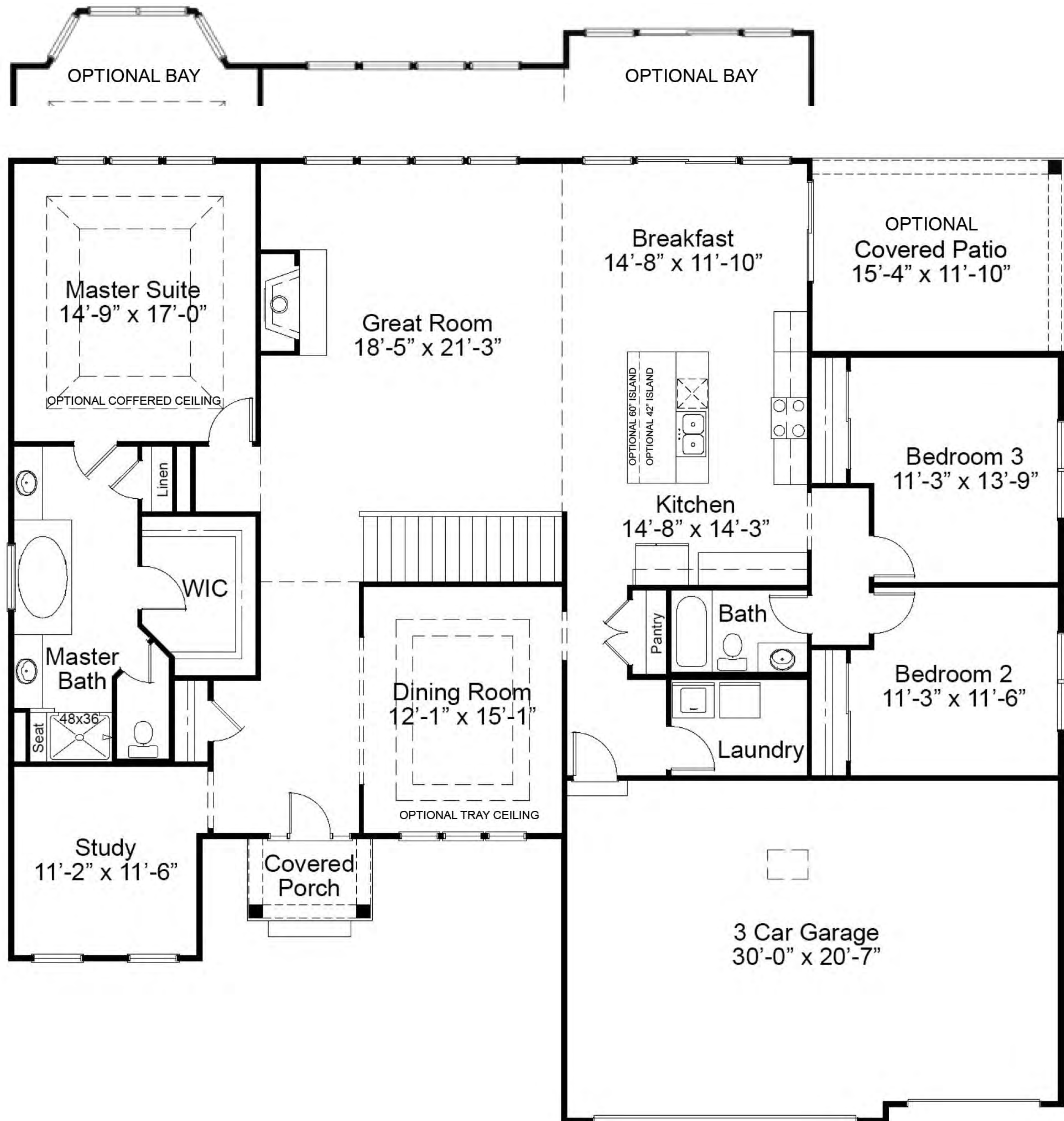


Elevation VI



Please be sure to review actual blueprints with Community Sales Manager for complete details. Fischer & Frichtel Custom Homes has a policy of continuous improvements of products and reserves the right to make improvements or changes on products and prices without notice.

WOODSIDE FIRST FLOOR PLAN



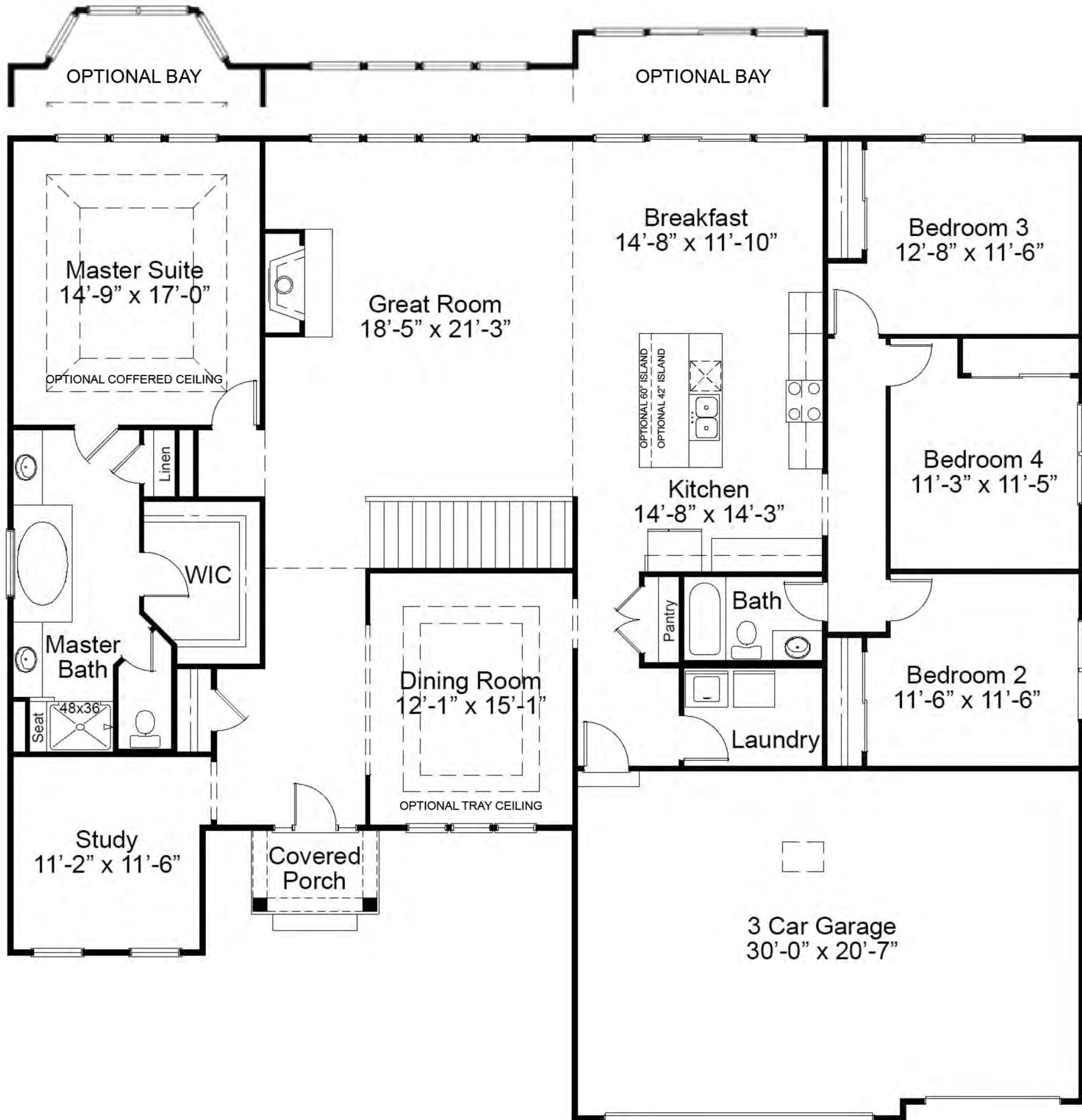
THE WOODSIDE

The Woodside is a stunning ranch-style home with a spacious master suite on one end, and two bedrooms on the other end for enhanced privacy. The open concept kitchen, breakfast room and great room is great for gatherings with family and friends, while a separate dining room, study and large laundry room provide maximum comfort and convenience. Options such as a hearth room and powder room may be added to the main living area. A fourth bedroom, Jack & Jill bath, a hearth room, covered patio and a finished lower level may also be added to tailor this home for a larger family.



FandFHomes.com
Click on the Interactive Design Tool tab
to virtually explore your dream home

WOODSIDE 4 BEDROOM EXPANDED PLAN



OPTIONAL POWDER ROOM



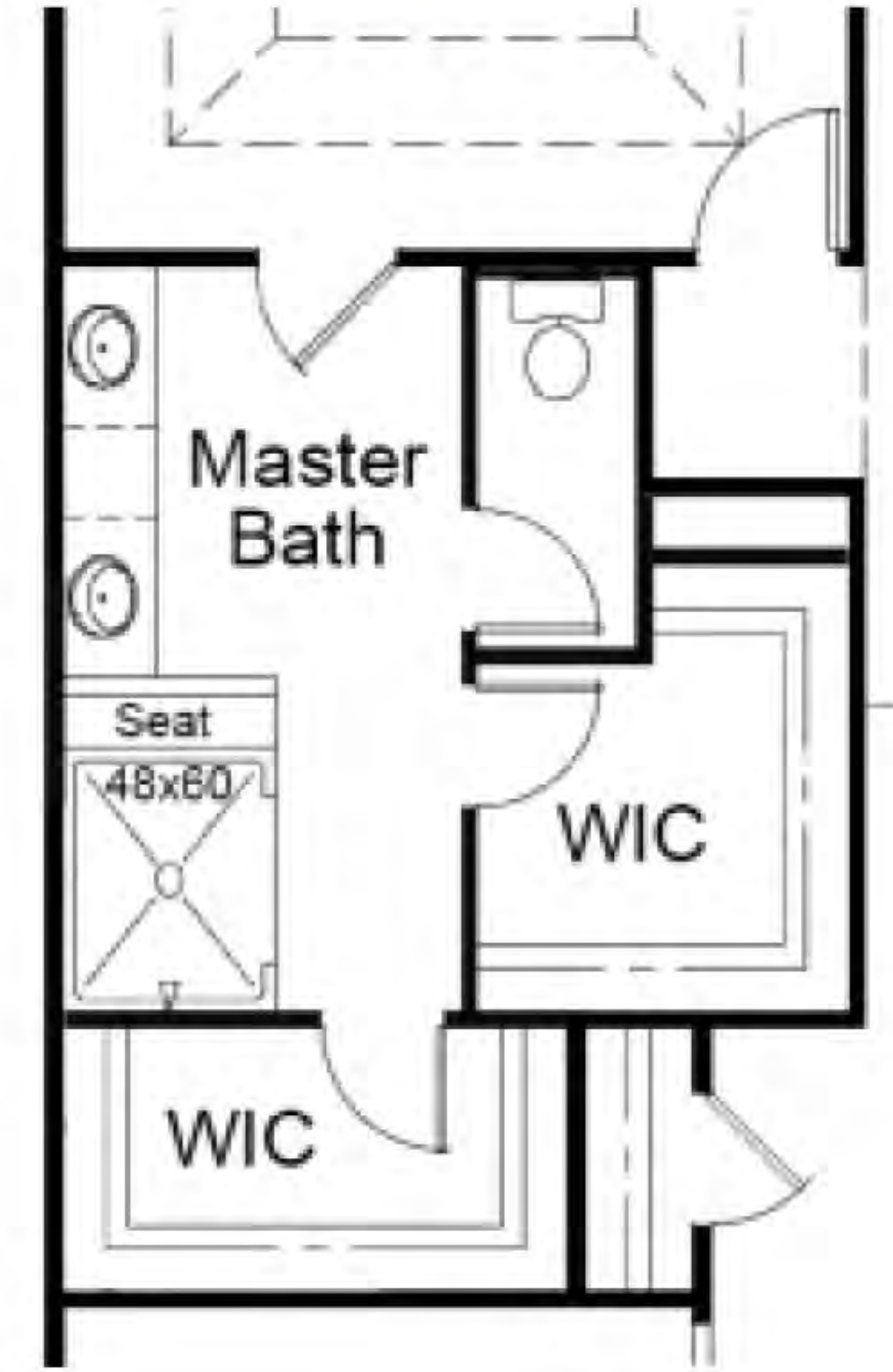
HERITAGE COLLECTION
THE WOODSIDE
 RANCH

3 Beds | 2 Baths | 3 Car Garage | 2,480 sq ft

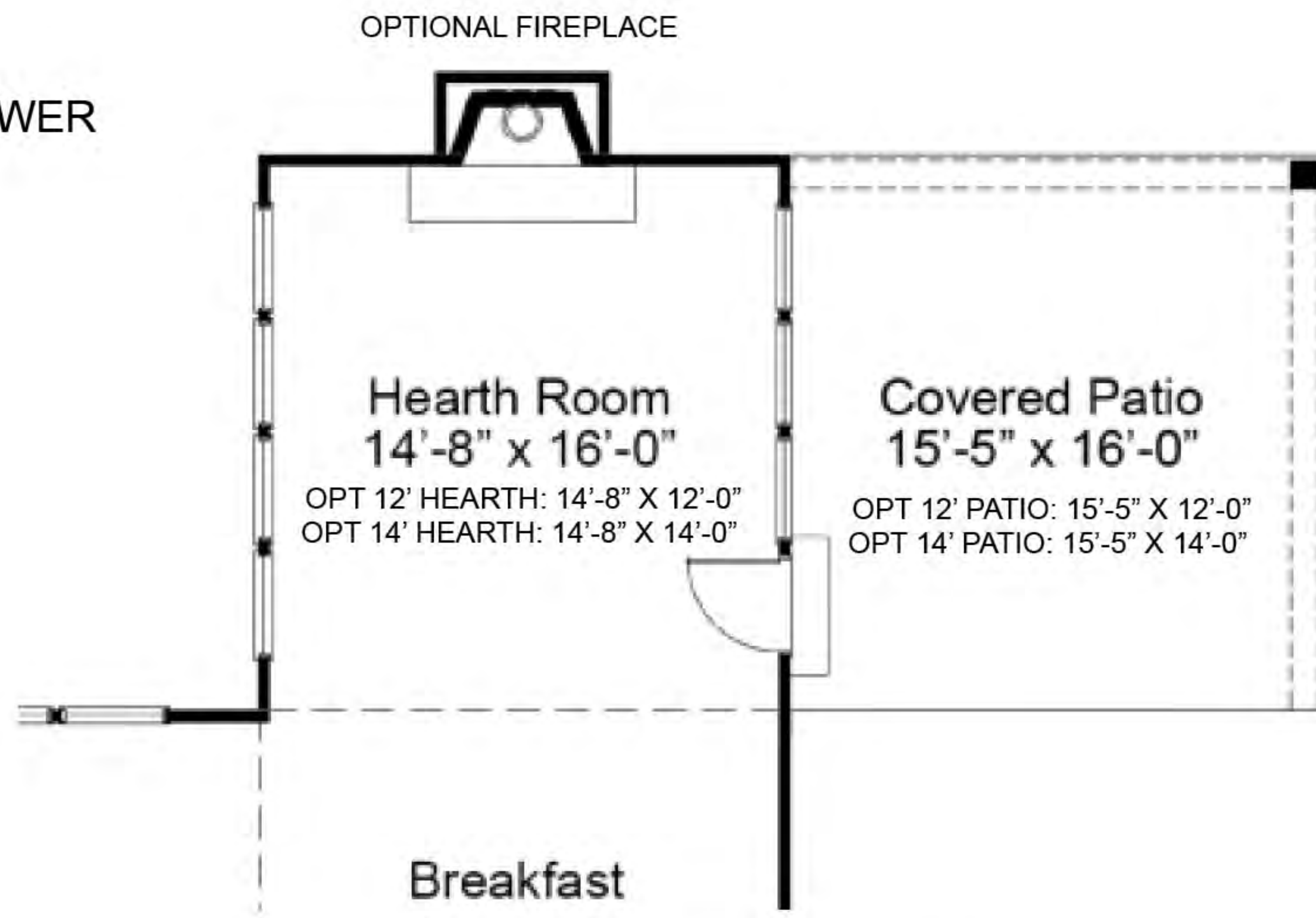
FIRST FLOOR ENHANCEMENT OPTIONS



OPTIONAL LUXURY SHOWER



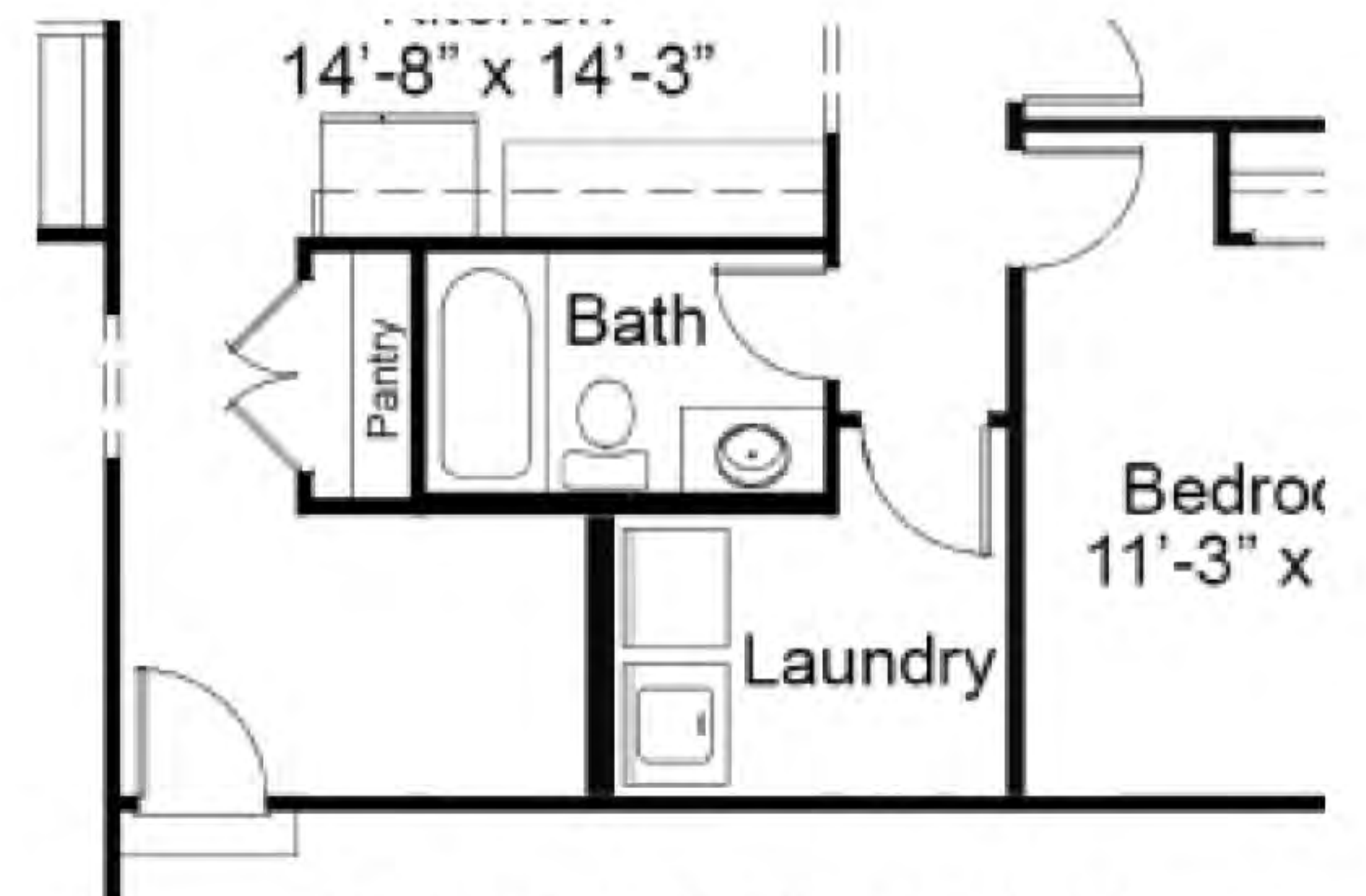
OPTIONAL SPA BATH



OPTIONAL HEARTH ROOM/
 OPTIONAL COVERED PATIO (REQUIRES EXPANDED PLAN OPTION)



OPTIONAL FAMILY FOYER 1



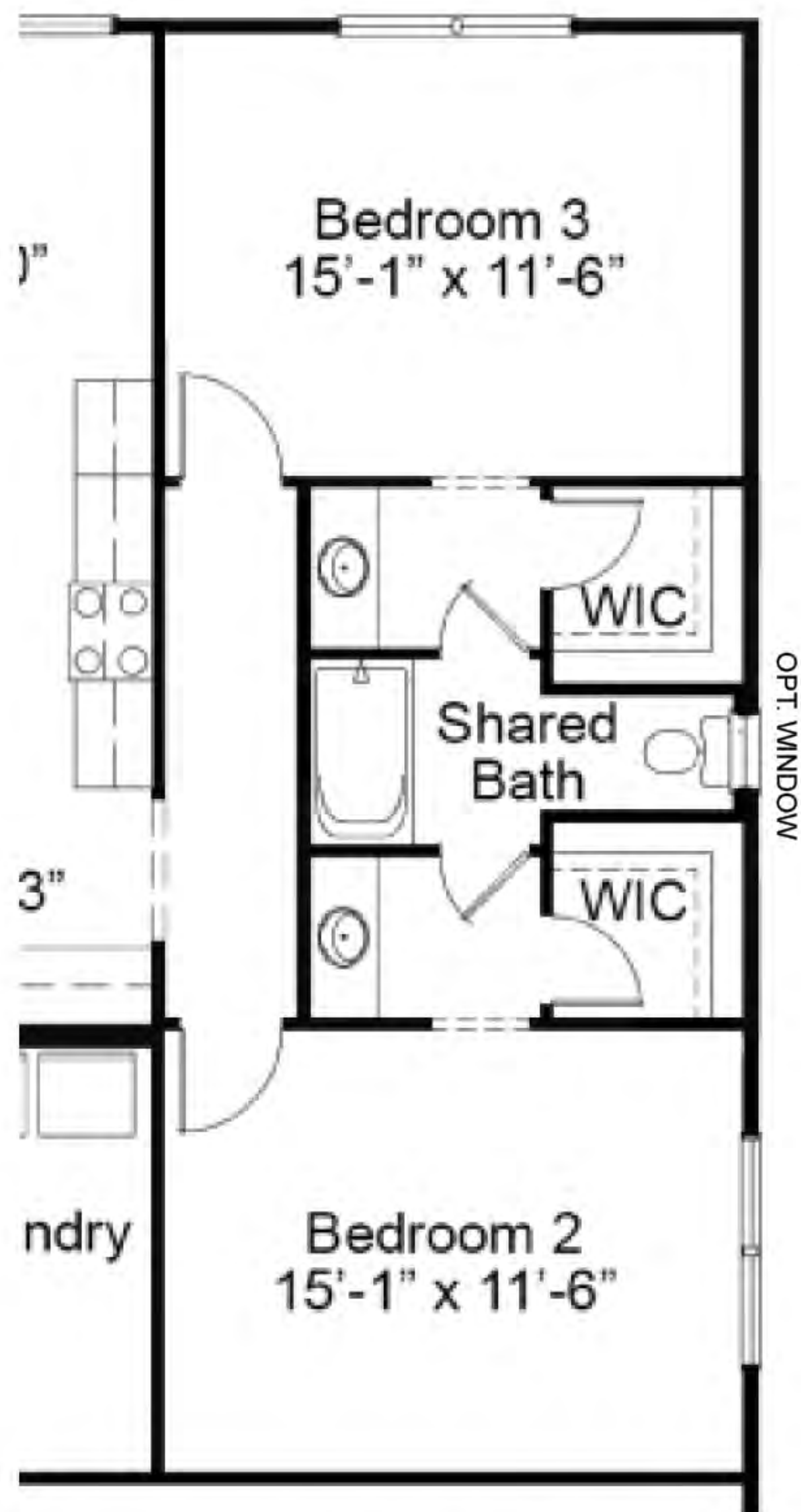
OPTIONAL FAMILY FOYER 2



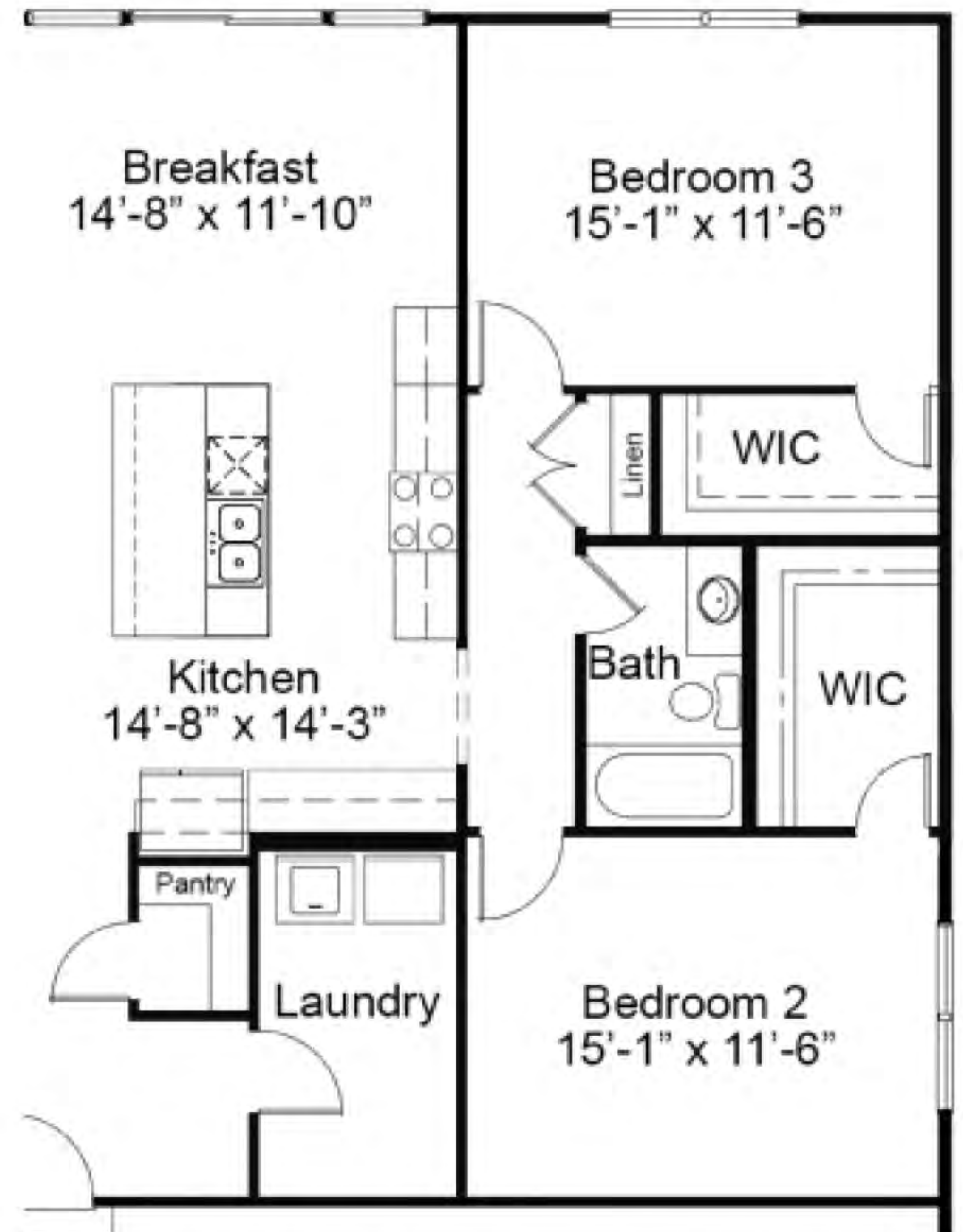
HERITAGE COLLECTION
THE WOODSIDE
 RANCH

3 Beds | 2 Baths | 3 Car Garage | 2,480 sq ft

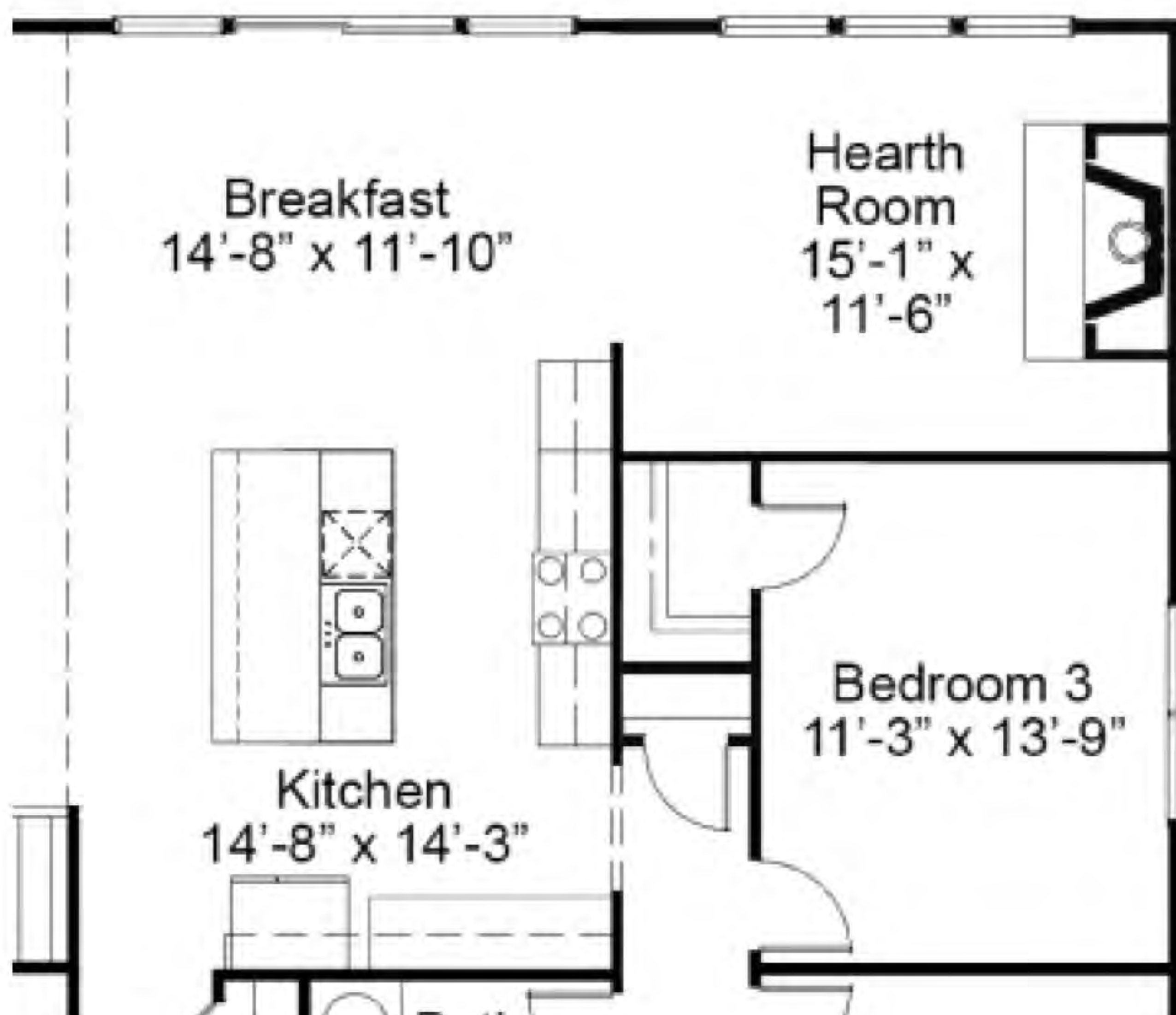
EXPANDED PLAN ENHANCEMENT OPTIONS



OPTIONAL JACK & JILL BATH



OPTIONAL EXPANDED BEDROOM 3



OPTIONAL CORNER HEARTH



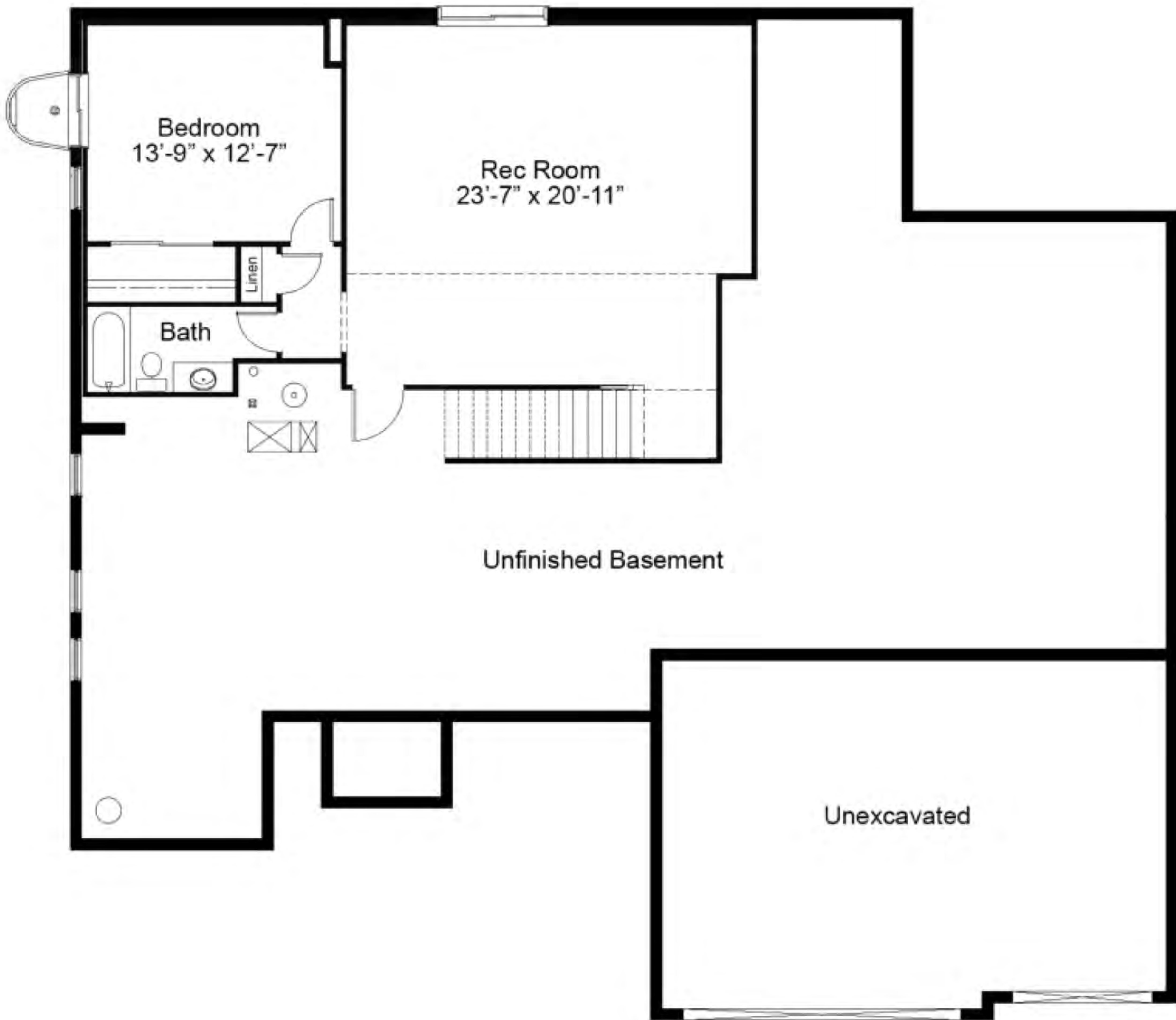
OPTIONAL LAUNDRY W/ EXPANDED BEDROOM 3



HERITAGE COLLECTION
THE WOODSIDE
RANCH

3 Beds | 2 Baths | 3 Car Garage | 2,480 sq ft

WOODSIDE OPTIONAL FINISHED LOWER LEVEL



Floor plans may show options not included in the base price. All dimensions are approximate and may vary with elevation. Please be sure to review actual blueprints with Community Sales Manager for complete details. Fischer & Frichtel Custom Homes has a policy of continuous improvements of products and reserves the right to make improvements or changes on products and prices without notice.