

fischer & frichtel **4**

A Homebuilding Legacy Since 1945



ESTATE COLLECTION

THE WESTBROOKE

1.5-STORY

4 Beds | 3.5 Baths | 3 Car Garage | 4,109 sq ft

*The elevations on this brochure are an artist's conception and may vary slightly from actual construction.



ESTATE COLLECTION
THE WESTBROOKE
1.5-STORY

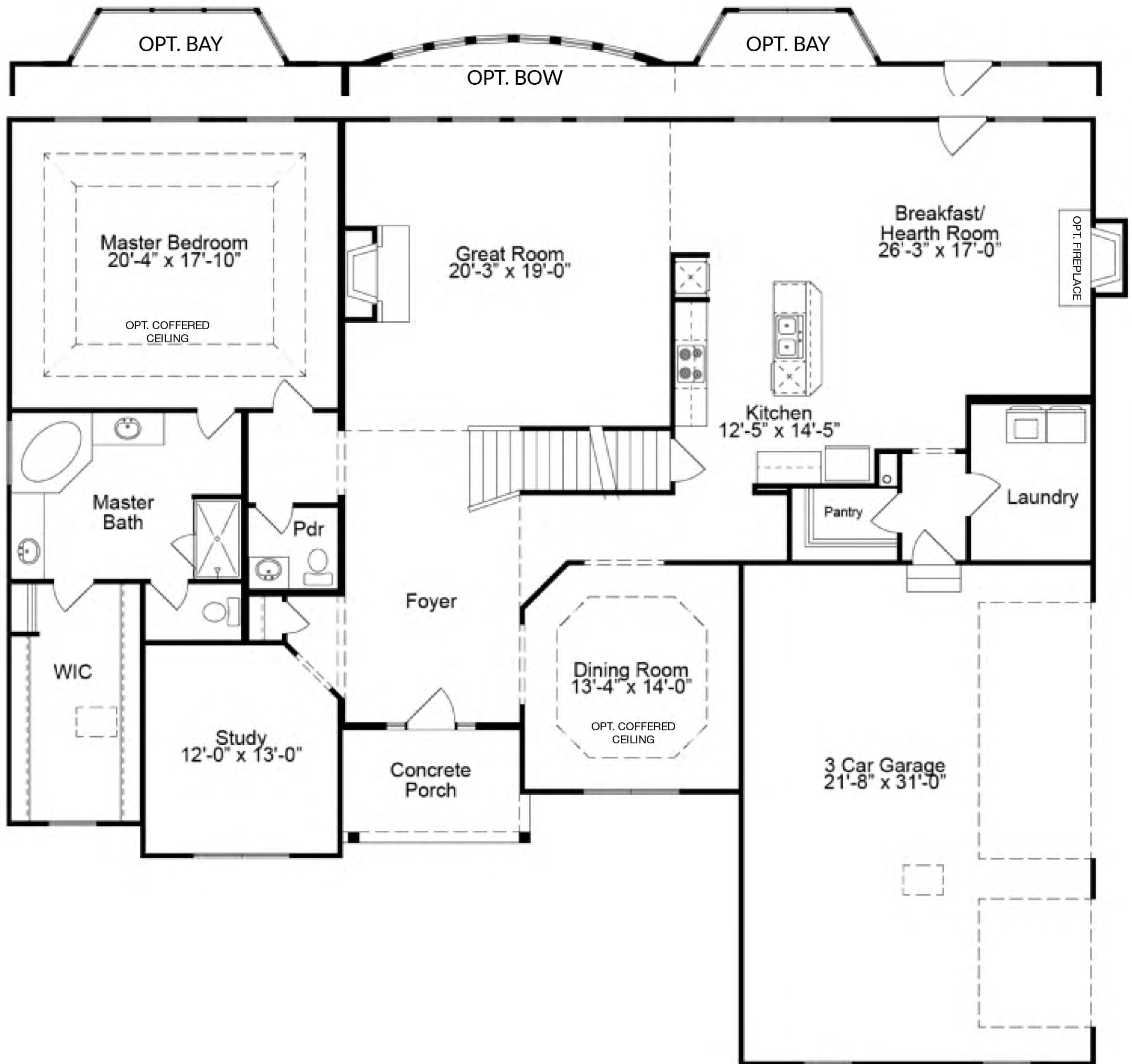
4 Beds | 3.5 Baths | 3 Car Garage | 4,109 sq ft

ELEVATION OPTIONS



Please be sure to review actual blueprints with Community Sales Manager for complete details. Fischer & Frichtel Custom Homes has a policy of continuous improvements of products and reserves the right to make improvements or changes on products and prices without notice.

WESTBROOKE FIRST FLOOR PLAN



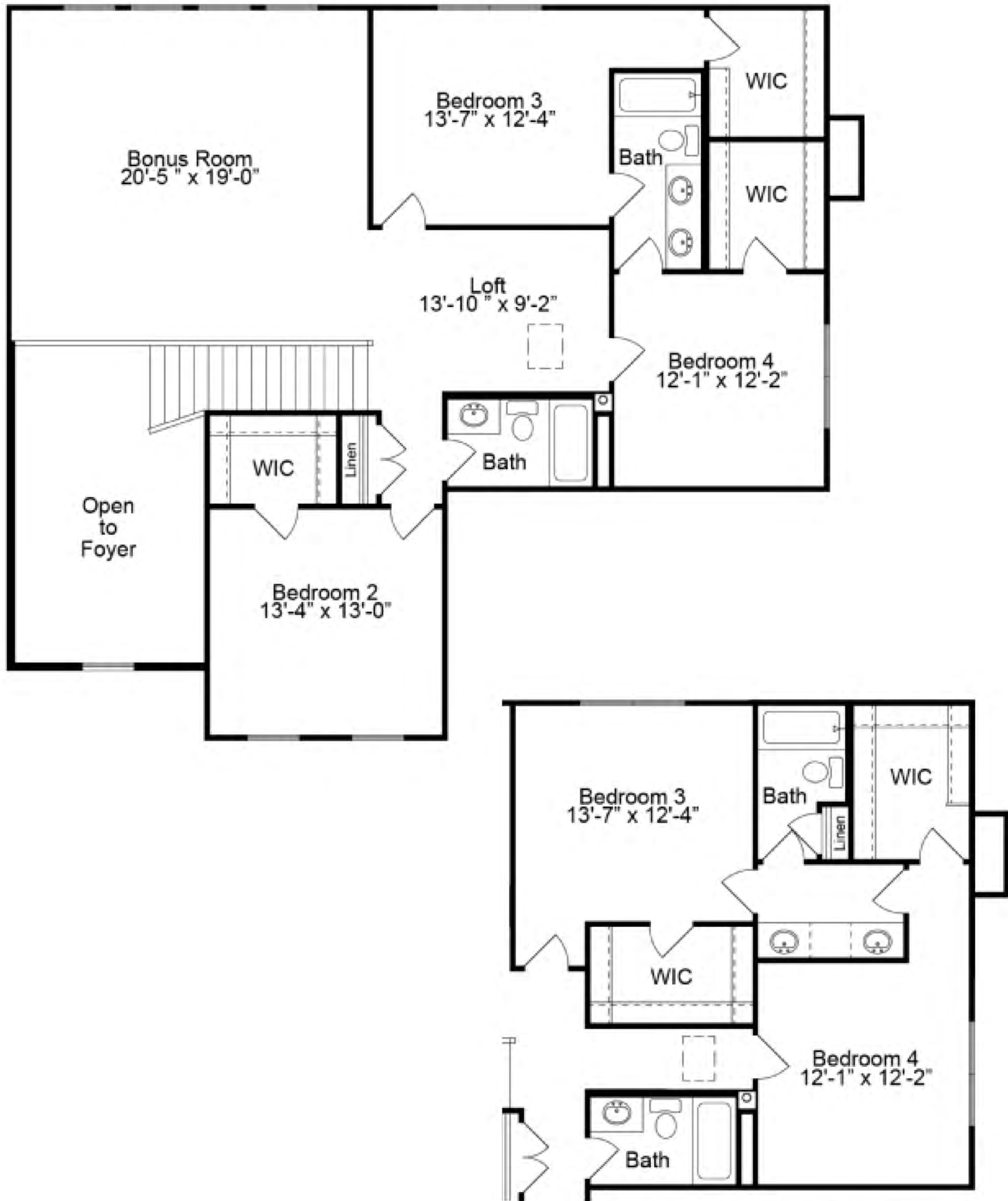
THE WESTBROOKE

The Westbrooke is an impressively sized 1.5 story home with a luxurious and spacious master bedroom suite. The main floor living space includes an open breakfast space, kitchen, large laundry room and walk-in pantry. The formal dining room and study provide additional space for both function and entertaining. The second floor is perfect for guests or family with three additional bedrooms, a loft and a large bonus room. Additional enhancement options include a finished lower level, second floor jack & jill bath and more!



FandFHomes.com
Click on the Interactive Design Tool tab
to virtually explore your dream home

WESTBROOKE SECOND FLOOR PLAN



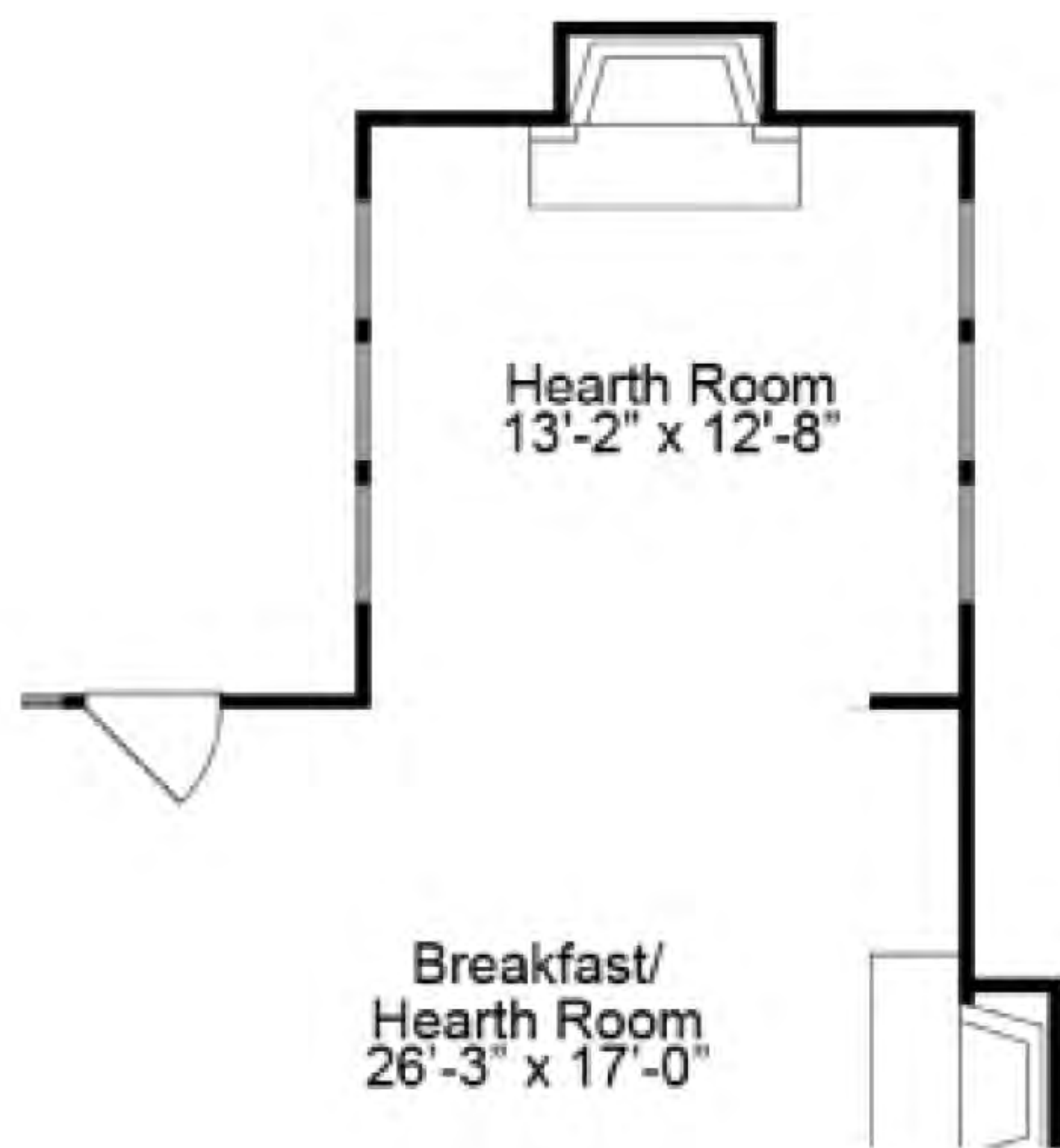
OPTIONAL JACK & JILL BATH



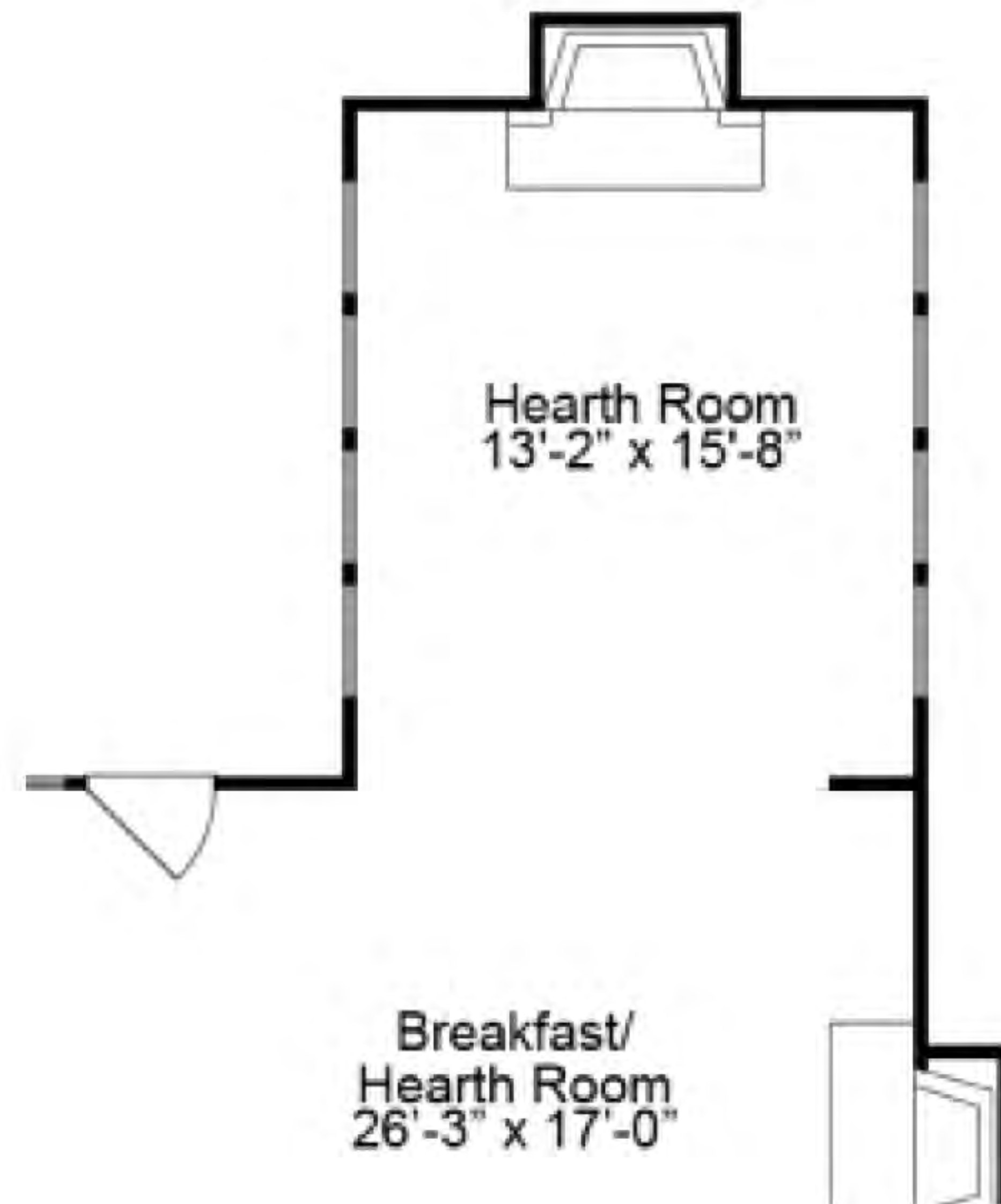
ESTATE COLLECTION
THE WESTBROOKE
1.5-STORY

4 Beds | 3.5 Baths | 3 Car Garage | 4,109 sq ft

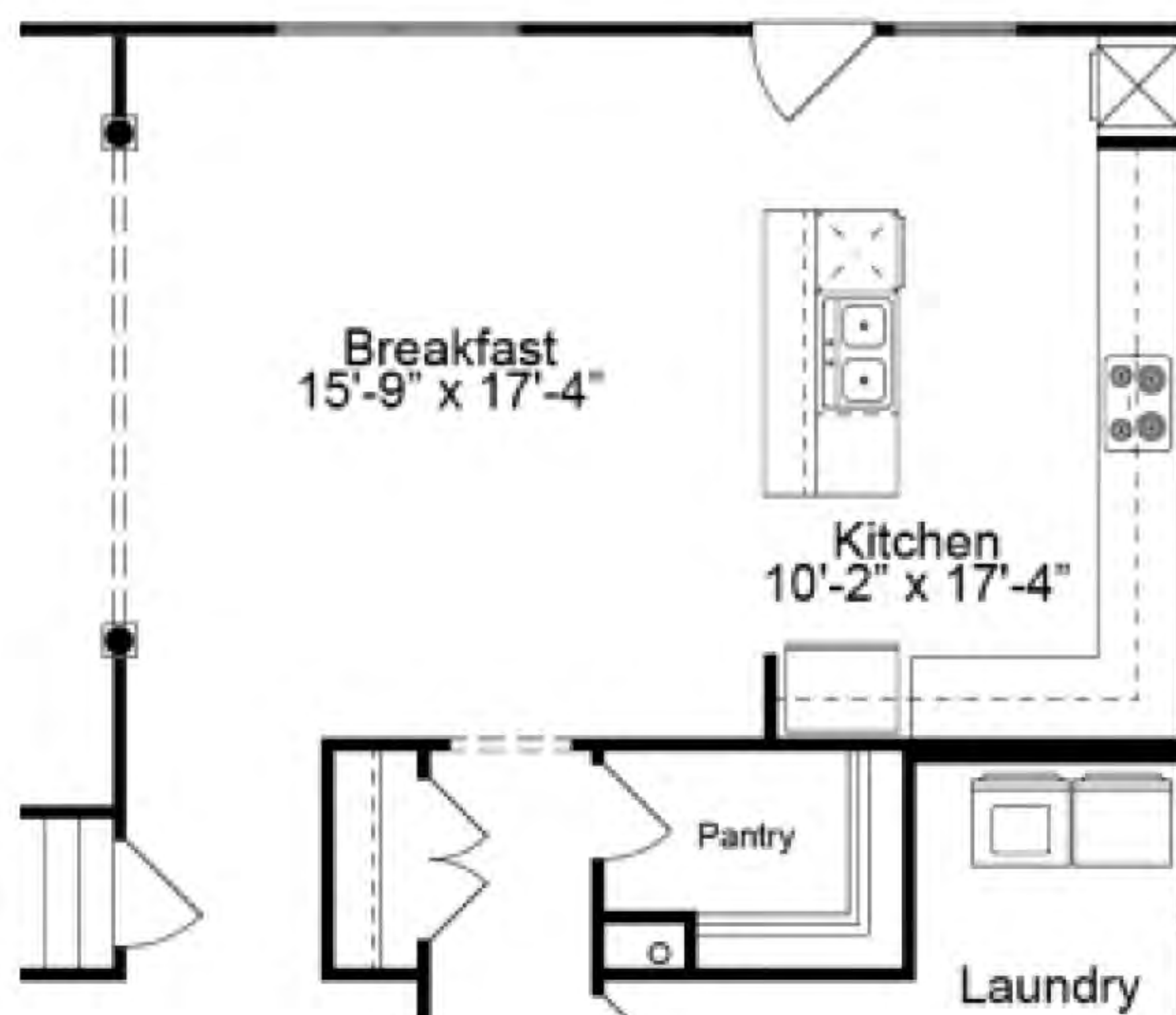
FIRST FLOOR ENHANCEMENT OPTIONS



OPTIONAL HEARTH ROOM 1



OPTIONAL HEARTH ROOM 2



ALTERNATE KITCHEN LAYOUT





ESTATE COLLECTION
THE WESTBROOKE
1.5-STORY

4 Beds | 3.5 Baths | 3 Car Garage | 4,109 sq ft

WESTBROOKE OPTIONAL FINISHED LOWER LEVEL



Floor plans may show options not included in the base price. All dimensions are approximate and may vary with elevation. Please be sure to review actual blueprints with Community Sales Manager for complete details. Fischer & Frichtel Custom Homes has a policy of continuous improvements of products and reserves the right to make improvements or changes on products and prices without notice.