

## THE PARKER

The Parker is 1.5 story home with an inviting exterior and large front porch on select elevations. This home features an open kitchen, breakfast area and living room, perfect for entertaining. Optional open dining room, study and powder room are available.

**DETAILS:**

- 1.5 Story
- 4 Bedrooms
- 3 Baths
- 2,590 Square Feet
- 2 Car Garage

**Want to create your dream home virtually? Visit our Interactive Design Tool tab at [fandfhomes.com](http://fandfhomes.com)**

The elevations on this brochure are an artist's conception and may vary slightly from actual construction. Cupolas, dormers, and other exterior detailing are optional. Please be sure to review actual blueprints with Community Sales Manager for specific plan and elevation details.

ELEVATION I



ELEVATION II



ELEVATION III



**THE  
PARKER**

ELEVATION IV



ELEVATION V

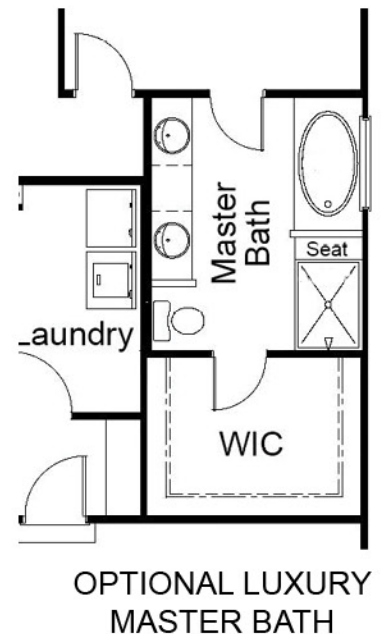
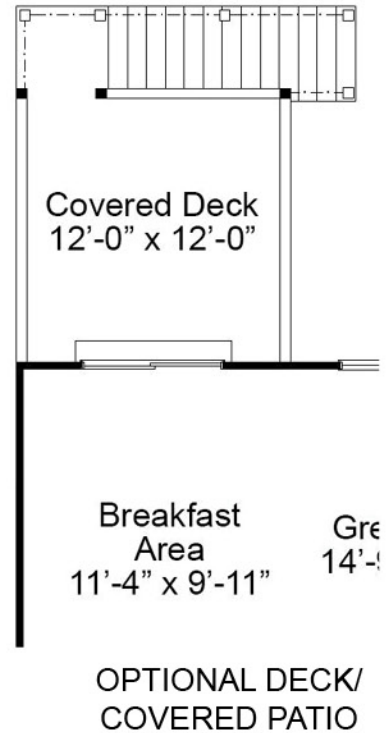
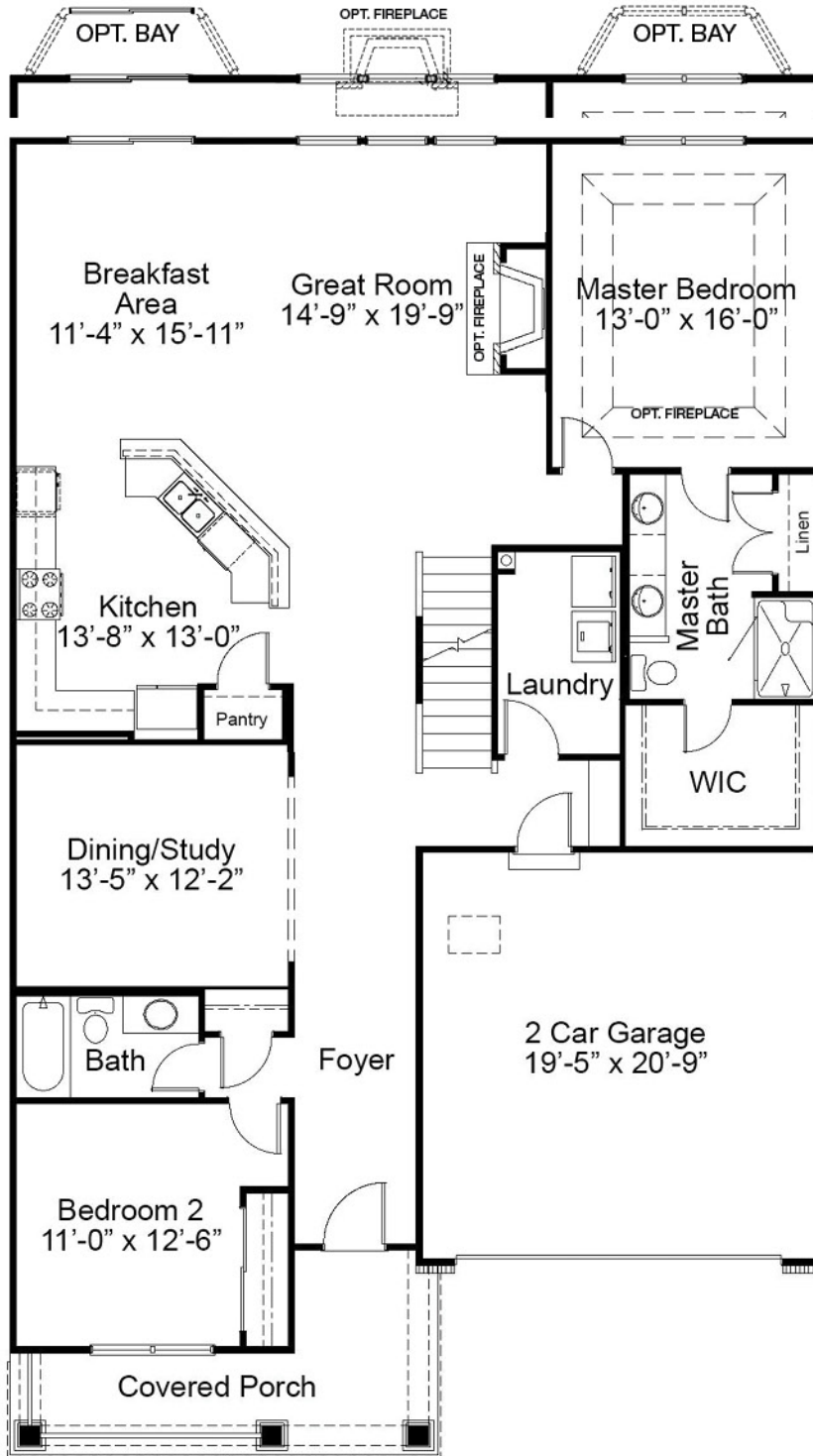


ELEVATION VI



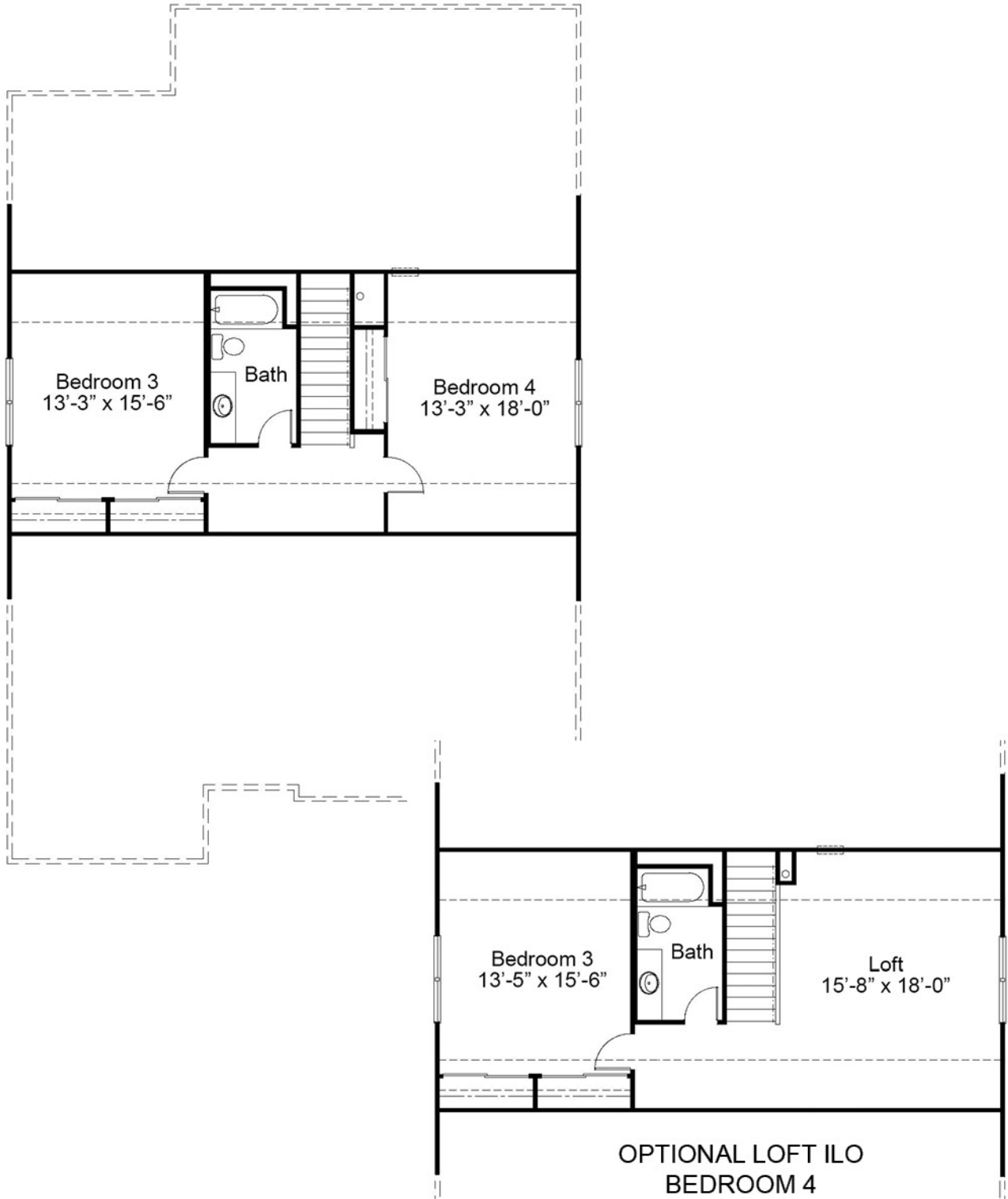
# The Parker 1.5 Story Floor Plan

## FIRST FLOOR PLAN



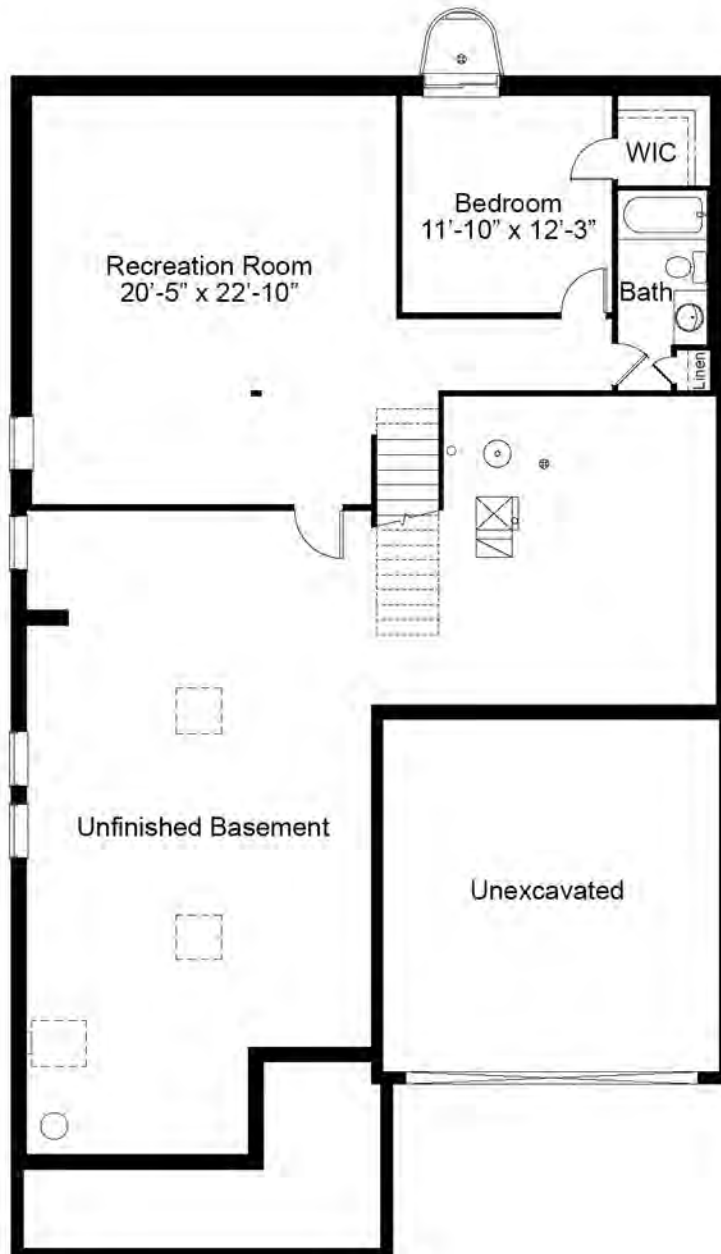
Please be sure to review actual blueprints with Community Sales Manager for complete details. All dimensions are approximate and may vary with elevation. Premium features such as bay windows may be standard or optional depending on community.

SECOND FLOOR PLAN



# The Parker 1.5 Story Floor Plan

## OPTIONAL FINISHED LOWER LEVEL



695 Trade Center Boulevard | Chesterfield | MO | 63005 | FandFHomes.com



Fischer & Frichtel Custom Homes has a policy of continuous improvements of products and reserves the right to make improvements or changes on products and prices without notice. Homes built in this community are built in accordance with the standard features of this community and may differ from similar plans offered in other Fischer & Frichtel developments. Floor plans and exterior designs may show options not included in the base price. All square footages are approximate and may vary from actual plan dimensions



REV 5-21-2021