

**THE
ASHLAND
3 BEDROOM**

The Ashland 3 bedroom has 2 baths, and is a villa-style ranch home with over 1,300 sq. ft. of living space. This open floor plan features an open kitchen, dining and living room area. The spacious master suite, which is situated in the back of the home, includes a large walk-in closet and luxurious master bath with dual sinks and a linen closet. A covered deck or patio, gas fireplace, finished lower level and more may be added to customize this beautiful home to your liking.

DETAILS:

- Villa-Style Ranch Plan
- 3 Bedrooms
- 2 Baths
- 1,347 Square Feet
- 2 Car Garage

The elevations on this brochure are an artist's conception and may vary slightly from actual construction. Cupolas, dormers, and other exterior detailing are optional. Please be sure to review actual blueprints with Community Sales Manager for specific plan and elevation details.

BASE ELEVATION



ELEVATION I



ELEVATION II



ELEVATION III



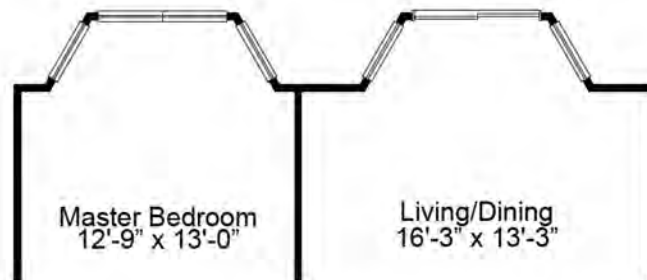


The Ashland 3 Bedroom Ranch Floor Plan

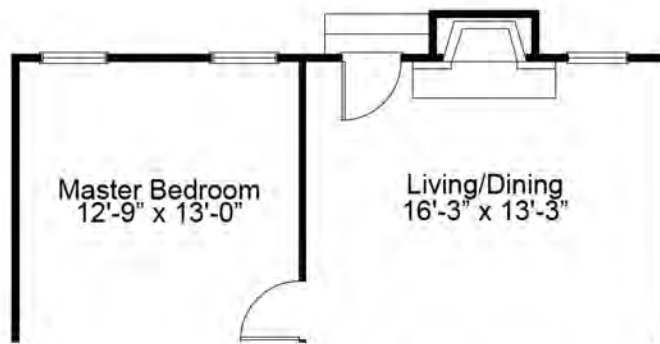
FIRST FLOOR PLAN



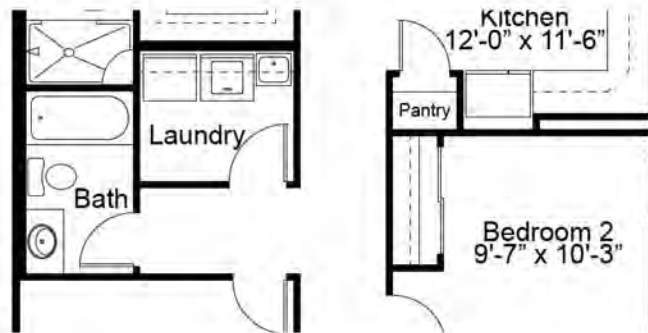
ENHANCEMENT OPTIONS



Optional Bay Windows in Master Bedroom & Living Room



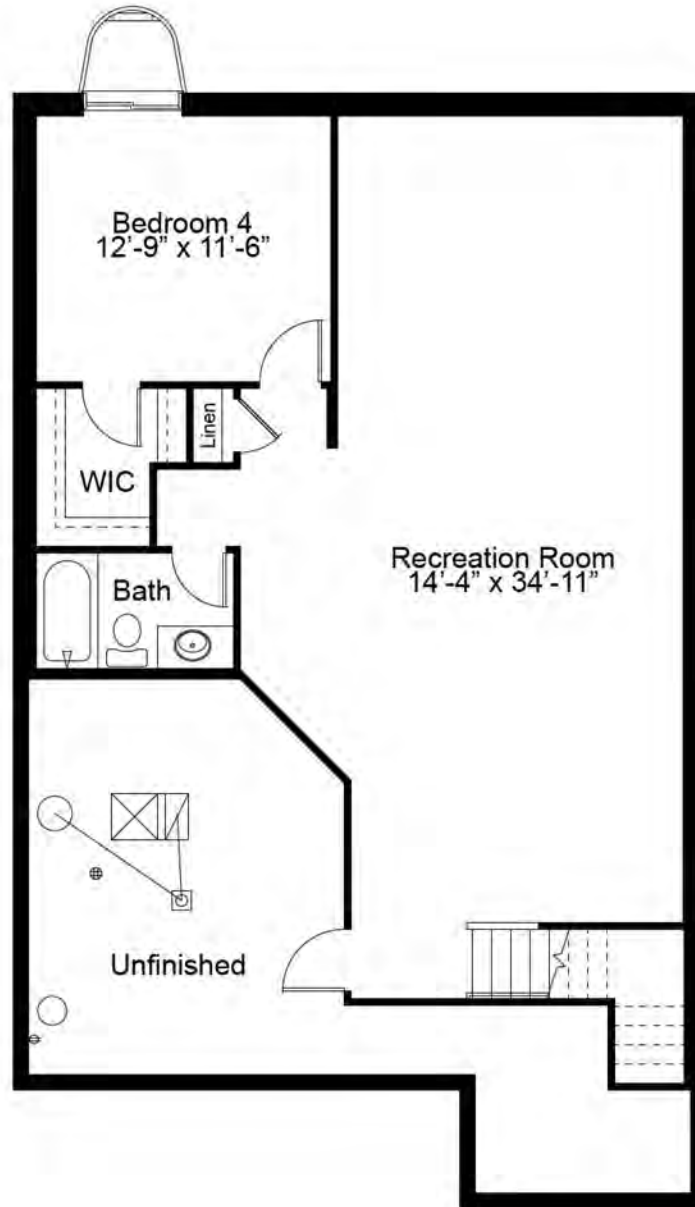
Optional Fireplace in Living Room



Optional Laundry Tub

The Ashland 3 Bedroom Ranch Floor Plan

OPTIONAL FINISHED LOWER LEVEL



695 Trade Center Boulevard | Chesterfield | MO | 63005 | FandFHomes.com



Fischer & Frichtel Custom Homes has a policy of continuous improvements of products and reserves the right to make improvements or changes on products and prices without notice. Homes built in this community are built in accordance with the standard features of this community and may differ from similar plans offered in other Fischer & Frichtel developments. Floor plans and exterior designs may show options not included in the base price. All square footages are approximate and may vary from actual plan dimensions



Rev 2-11-2020