

## THE DEVONSHIRE

The 2-story Devonshire is a 3 bedroom, 2.5 bath floor plan with over 1,600 sq. ft. of living space. The main floor living area features an open concept kitchen, dining and living room spaces, and a powder room—all perfect for family time or entertaining guests. The second floor features a large master suite with dual walk-in closets, an open loft area and two additional bedrooms, each with walk-in closets and a shared hall bath. Enhancement options for this fantastic home include a modified kitchen layout, second floor laundry and finished lower level.

### DETAILS:

2 Story Plan

3 Bedrooms

2.5 Baths

1,629 Square Feet

2 Car Garage

The elevations on this brochure are an artist's conception and may vary slightly from actual construction. Cupolas, dormers, and other exterior detailing are optional. Please be sure to review actual blueprints with Community Sales Manager for specific plan and elevation details.

## Windswept Collection

BASE ELEVATION



ELEVATION I



ELEVATION II

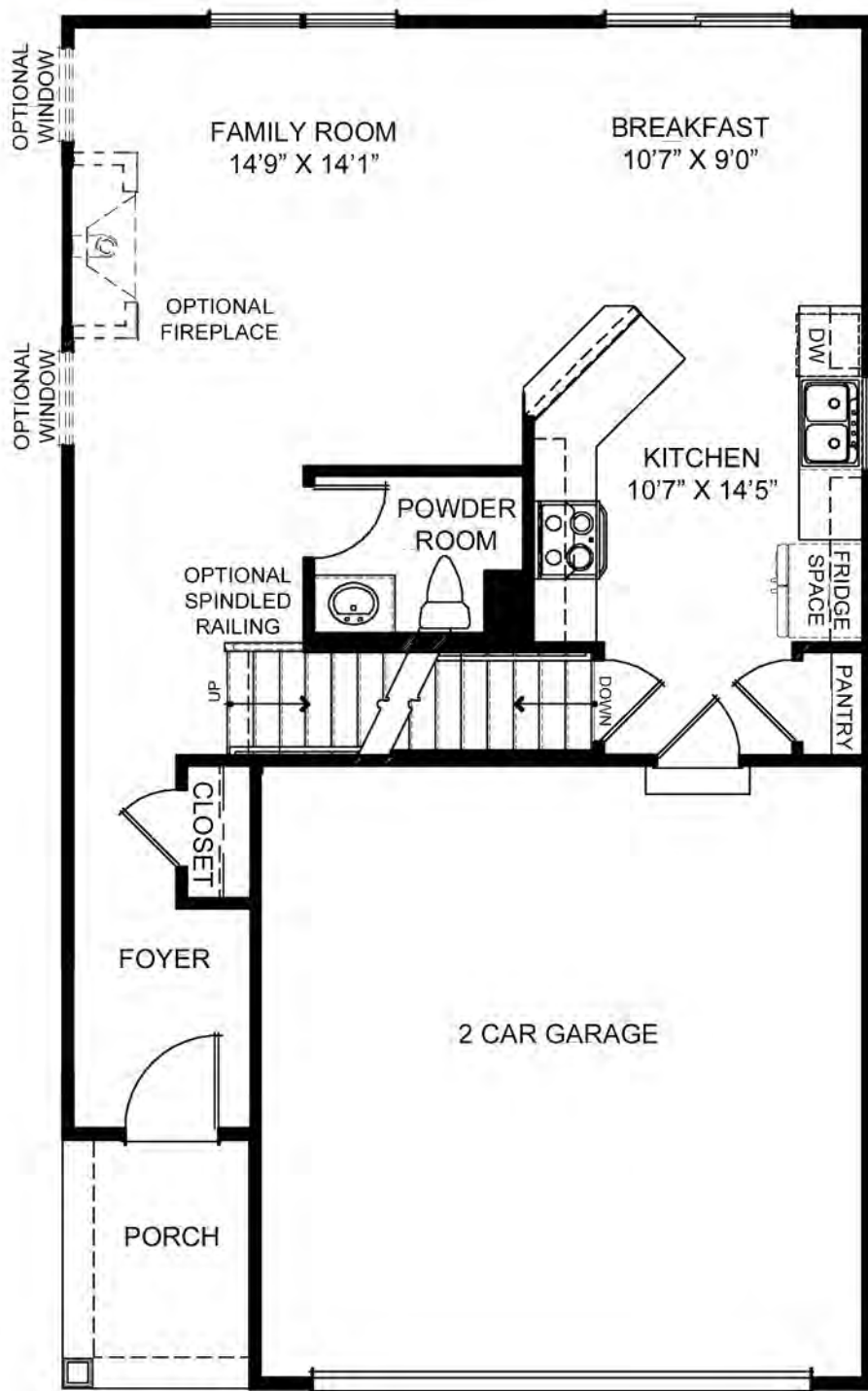


ELEVATION III



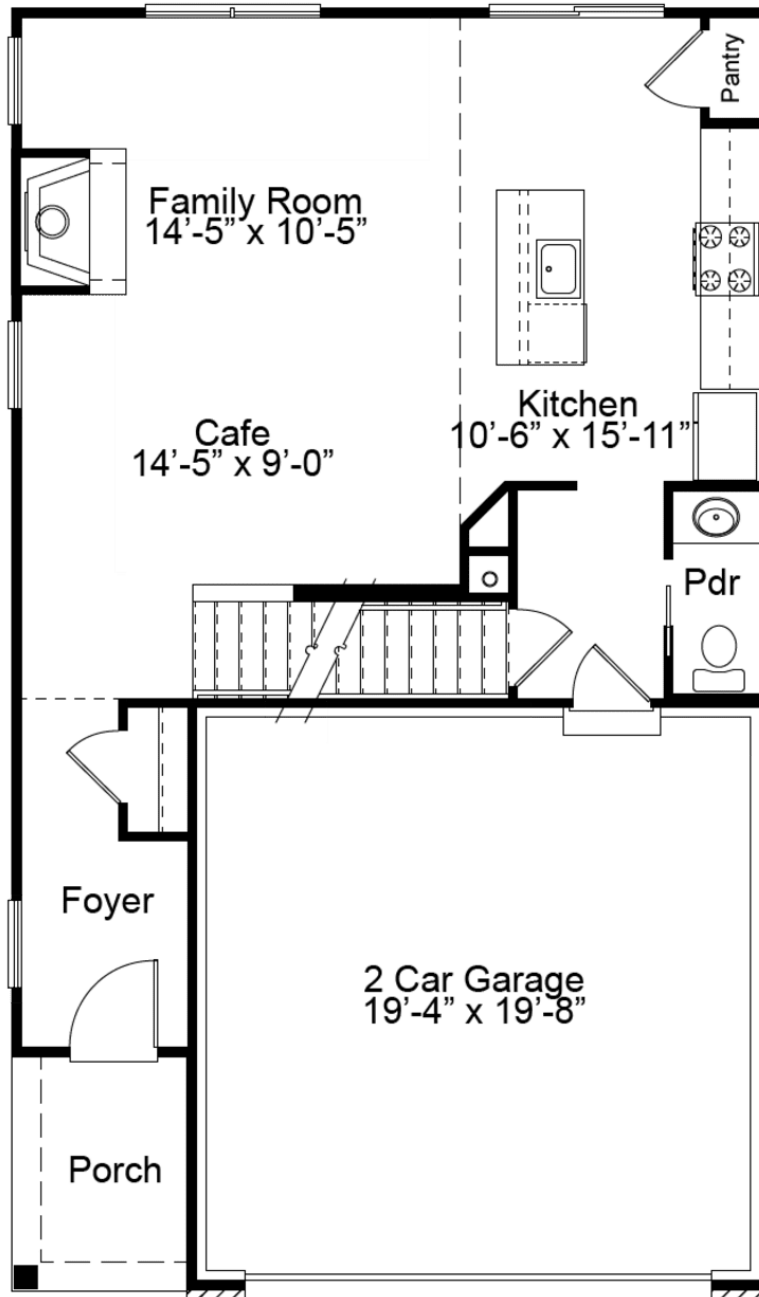
# The Devonshire 2 Story Floor Plan

## FIRST FLOOR PLAN



# The Devonshire 2 Story Floor Plan

OPTIONAL FIRST FLOOR WITH LUXURY KITCHEN



695 Trade Center Boulevard | Chesterfield | MO | 63005 | [FandFHomes.com](http://FandFHomes.com)

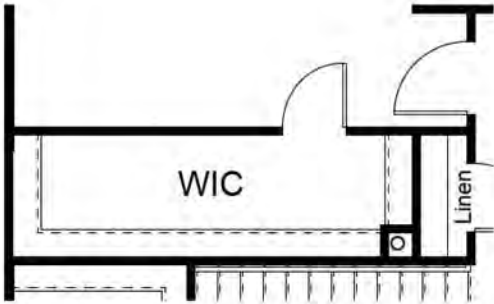
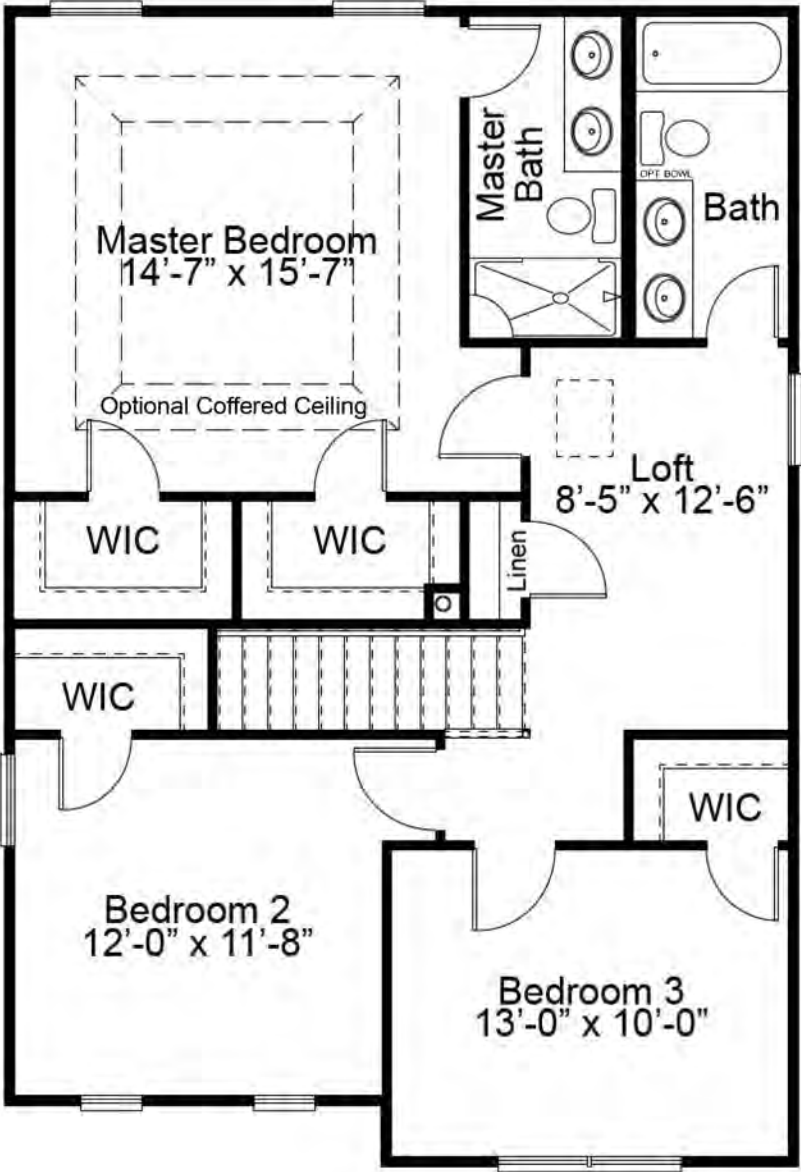


Fischer & Frichtel Custom Homes has a policy of continuous improvements of products and reserves the right to make improvements or changes on products and prices without notice. Homes built in this community are built in accordance with the standard features of this community and may differ from similar plans offered in other Fischer & Frichtel developments. Floor plans and exterior designs may show options not included in the base price. All square footages are approximate and may vary from actual plan dimension



Rev 3-20-2020

SECOND FLOOR PLAN



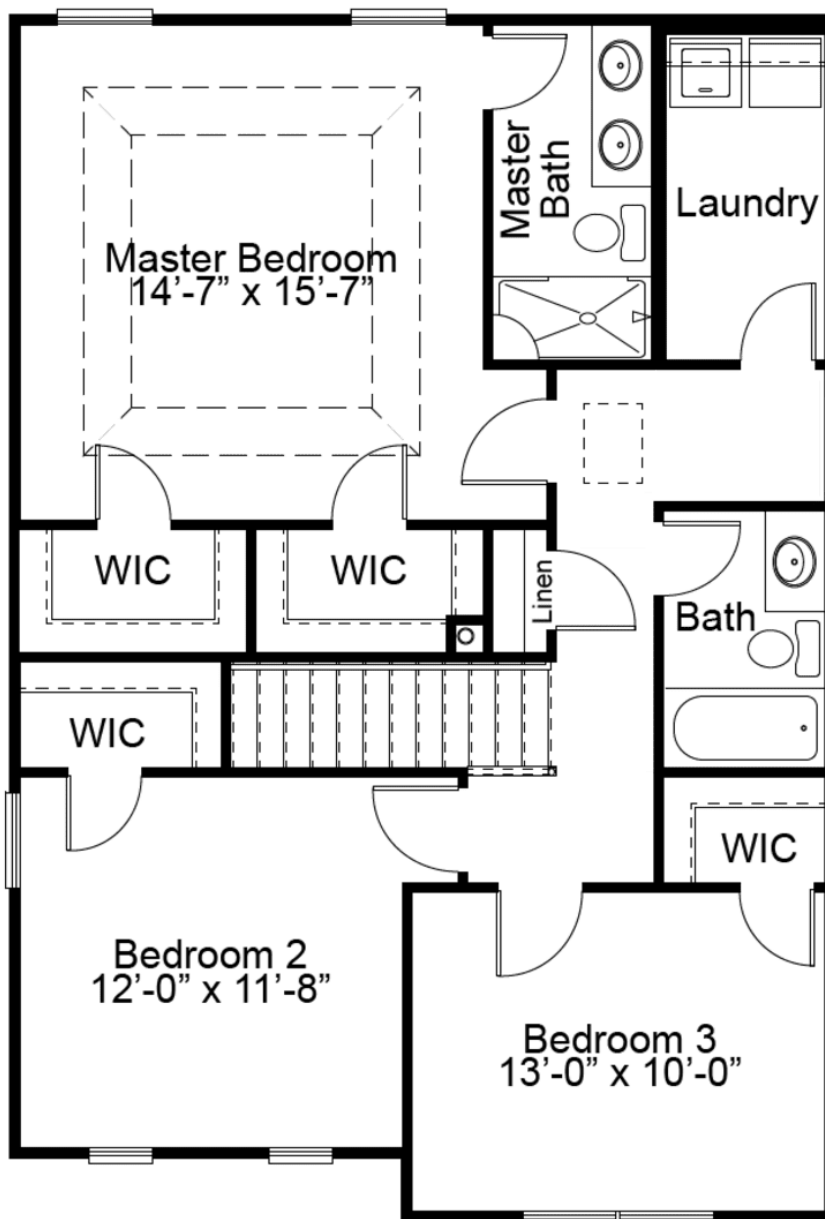
Optional Master Bedroom Closet



Optional Second Floor Laundry

# The Devonshire 2 Story Floor Plan

## OPTIONAL SECOND FLOOR PLAN



695 Trade Center Boulevard | Chesterfield | MO | 63005 | FandFHomes.com



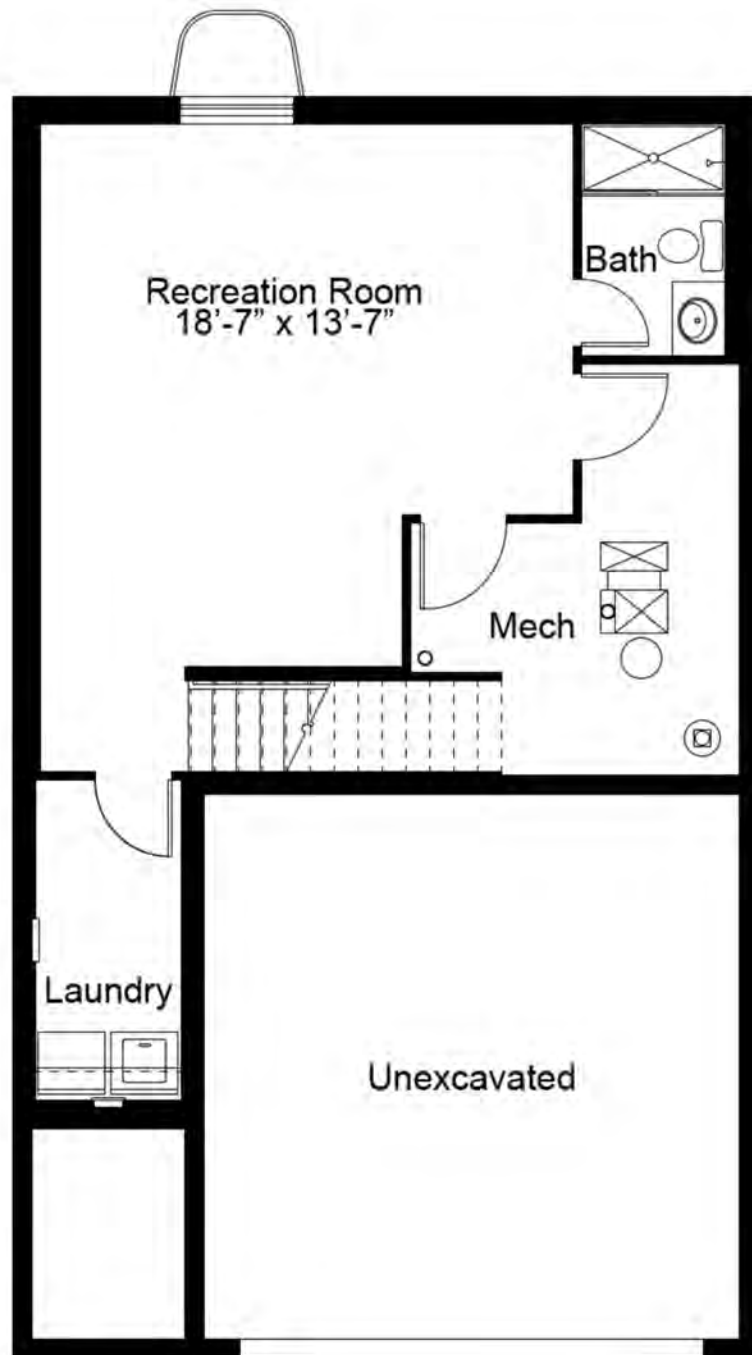
Fischer & Frichtel Custom Homes has a policy of continuous improvements of products and reserves the right to make improvements or changes on products and prices without notice. Homes built in this community are built in accordance with the standard features of this community and may differ from similar plans offered in other Fischer & Frichtel developments. Floor plans and exterior designs may show options not included in the base price. All square footages are approximate and may vary from actual plan dimension



Rev 3-20-2020

# The Devonshire 2 Story Floor Plan

## OPTIONAL FINISHED LOWER LEVEL



695 Trade Center Boulevard | Chesterfield | MO | 63005 | FandFHomes.com

Fischer & Frichtel Custom Homes has a policy of continuous improvements of products and reserves the right to make improvements or changes on products and prices without notice. Homes built in this community are built in accordance with the standard features of this community and may differ from similar plans offered in other Fischer & Frichtel developments. Floor plans and exterior designs may show options not included in the base price. All square footages are approximate and may vary from actual plan dimensions.



Rev 5-19-2020