

## THE RADFORD

The Radford is a 2 story style home that features a spacious open concept floor plan with an inviting living room, kitchen and dining area. The upstairs features a spacious master suite, large loft and two additional bedrooms. Make this home your own with options including a luxury master bath, living room fireplace and more.

### DETAILS:

2 Story Floor Plan  
3 Bedrooms  
2.5 Baths  
2,250 Square Feet  
2 Car Garage

The elevations on this brochure are an artist's conception and may vary slightly from actual construction. Cupolas, dormers, and other exterior detailing are optional. Please be sure to review actual blueprints with Community Sales Manager for specific plan and elevation details.

ELEVATION 1



ELEVATION 2



ELEVATION 3



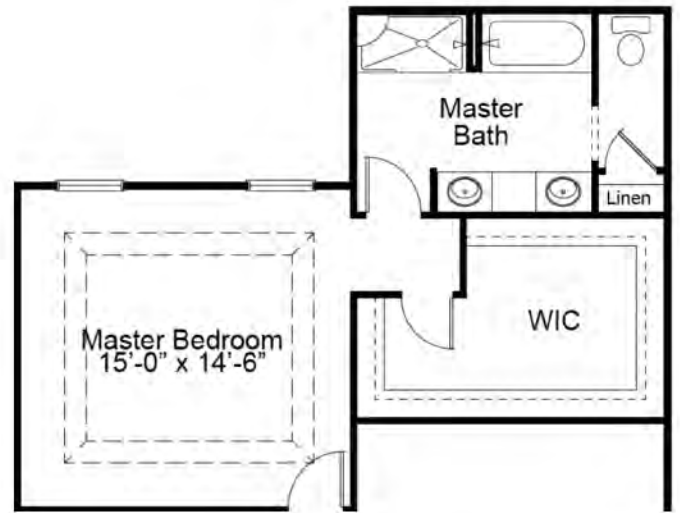
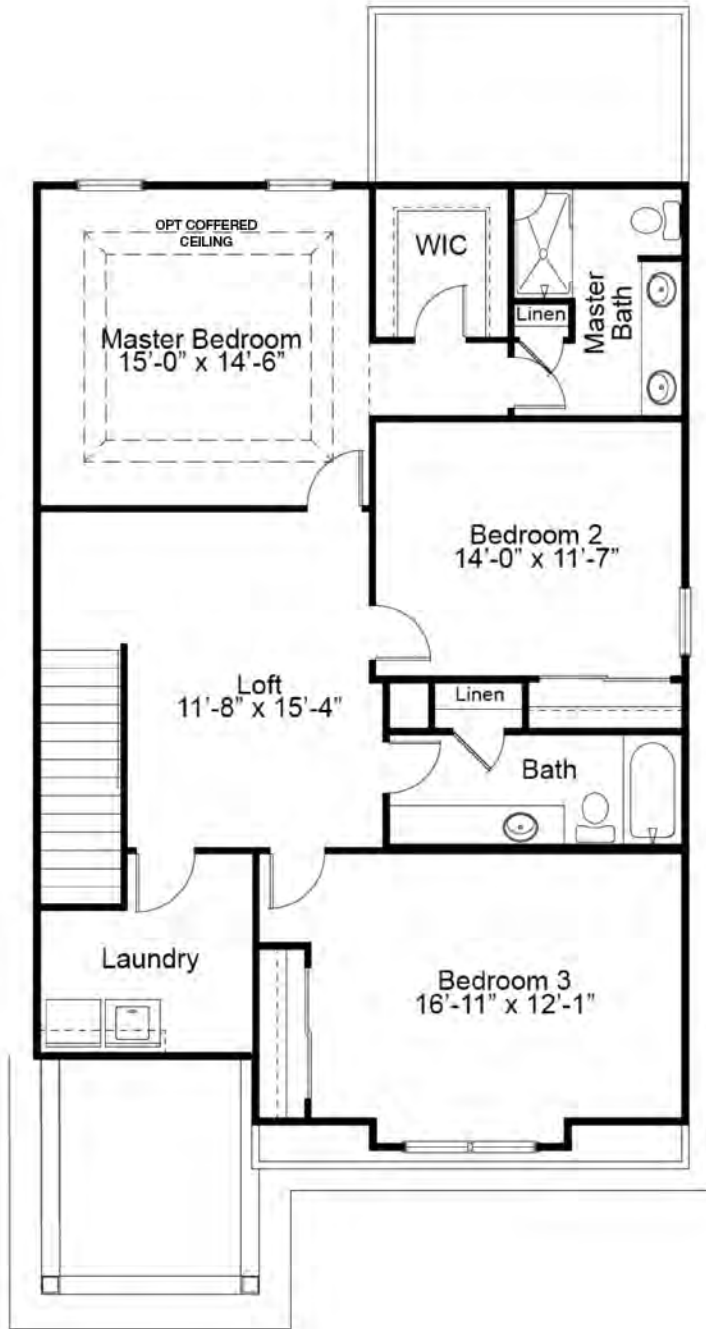
# The Radford 2 Story Floor Plan

## FIRST FLOOR PLAN





SECOND FLOOR PLAN & ENHANCEMENT OPTIONS



OPTIONAL LUXURY MASTER BATH



OPTIONAL SHARED HALL BATH

# The Radford 2 Story Floor Plan

## OPTIONAL FINISHED LOWER LEVEL



695 Trade Center Boulevard | Chesterfield | MO | 63005 | FandFHomes.com



Fischer & Frichtel Custom Homes has a policy of continuous improvements of products and reserves the right to make improvements or changes on products and prices without notice. Homes built in this community are built in accordance with the standard features of this community and may differ from similar plans offered in other Fischer & Frichtel developments. Floor plans and exterior designs may show options not included in the base price. All square footages are approximate and may vary from actual plan dimensions

