

THE MONARCH

The Monarch is a stunning, modern farmhouse style home with a spacious open floor plan, private study and a dining room off the kitchen. The exterior features stone and metal details and a 3-car tandem garage. The luxurious kitchen is open to the great room with 12' ceilings, wall of windows, fireplace and open staircase. In addition to the luxurious master suite, there is a secondary bedroom suite with private bath. Options include columns in the great room, a coffered ceiling in the master bedroom and a finished lower level.

DETAILS:

Ranch Plan

2 Bedrooms

2.5 Baths

2,765 Square Feet

3-Car Auto Court Garage

Virtually explore floor plan and color options! Visit our website, fandfhomes.com and click on the Interactive Design Tool tab.

The elevations on this brochure are an artist's conception and may vary slightly from actual construction. Cupolas, dormers, and other exterior detailing are optional. Please be sure to review actual blueprints with the community sales manager for specific plan and elevation details.

ELEVATION I



ELEVATION II



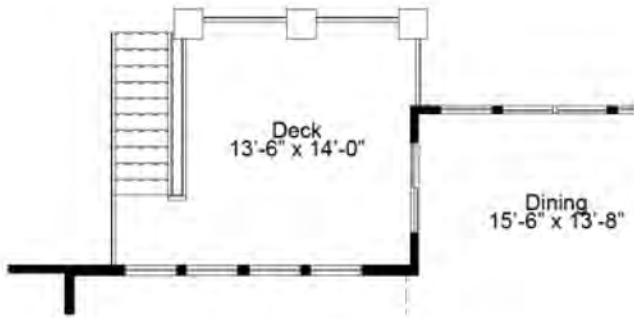


The Monarch Ranch Floor Plan

FIRST FLOOR PLAN



FIRST FLOOR ENHANCEMENT OPTIONS



OPTIONAL DECK



OPTIONAL COVERED DECK



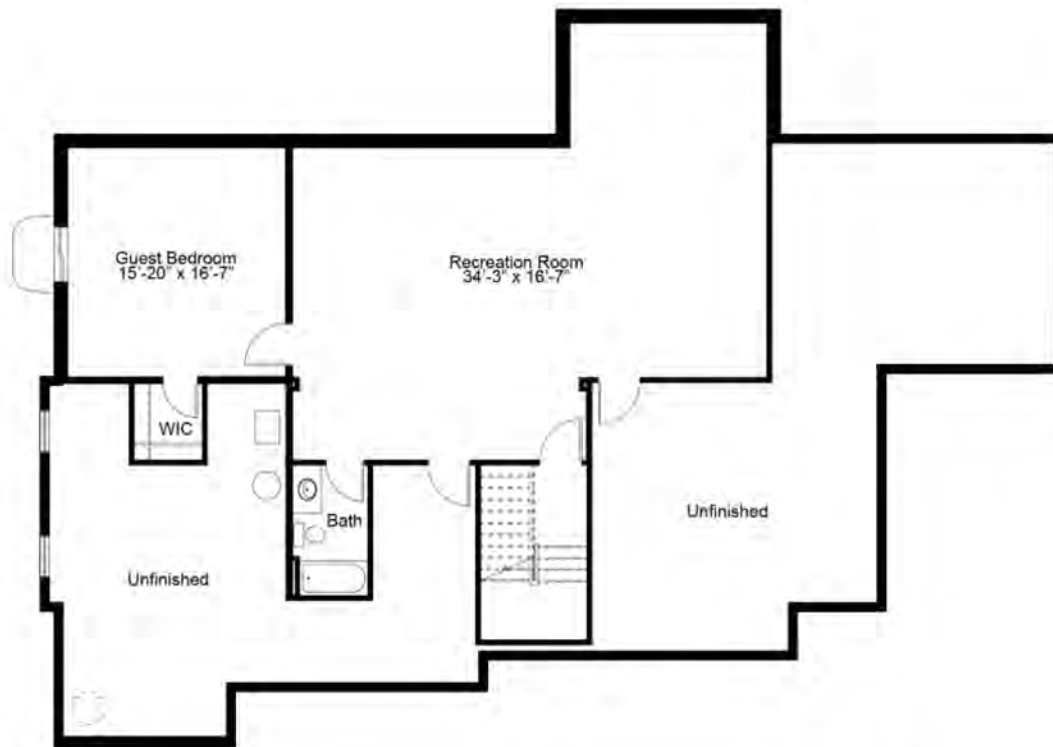
OPTIONAL SPA MASTER BATH



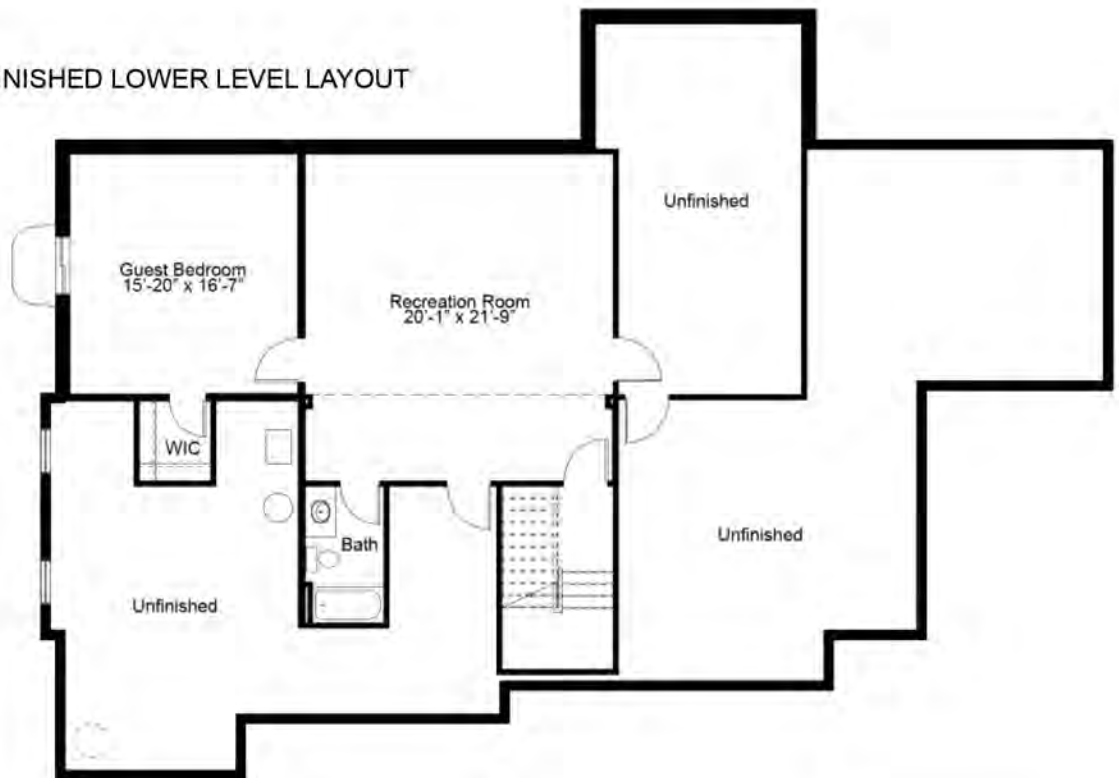
OPTIONAL GUEST BATHROOM LAYOUT

The Monarch Ranch Floor Plan

OPTIONAL FINISHED LOWER LEVEL



ALTERNATE FINISHED LOWER LEVEL LAYOUT



Fischer & Frichtel Custom Homes has a policy of continuous improvements of products and reserves the right to make improvements or changes on products and prices without notice. Homes built in this community are built in accordance with the standard features of this community and may differ from similar plans offered in other Fischer & Frichtel developments. Floor plans and exterior designs may show options not included in the base price. All square footages are approximate and may vary from actual plan dimensions.

