

## THE ESSEX

The Essex is a villa-style ranch featuring 2 bedrooms, 2 baths and 1,090 sq. ft. of living space. It features an open concept kitchen, dining and living room, and the spacious owner's suite is nestled at the rear of the home. With an impressively sized walk-in closet and private bath, it's truly a retreat. A third bedroom, covered deck or patio, gas fireplace and a finished lower level are just a few of the options available for this wonderful home.

**DETAILS:**

Villa-Style Ranch Plan

2 Bedrooms

2 Baths

1,090 Square Feet

2-Car Garage

The elevations on this brochure are an artist's conception and may vary slightly from actual construction. Cupolas, dormers, and other exterior detailing are optional. Please be sure to review actual blueprints with Community Sales Manager for specific plan and elevation details.

## Charlestowne Collection

BASE ELEVATION



ELEVATION I



ELEVATION II



ELEVATION III



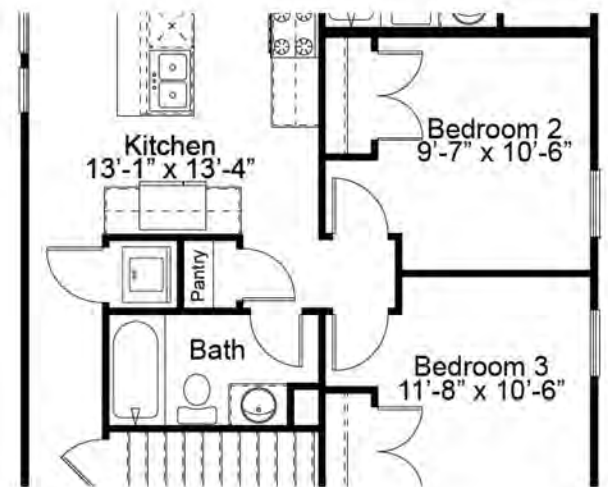
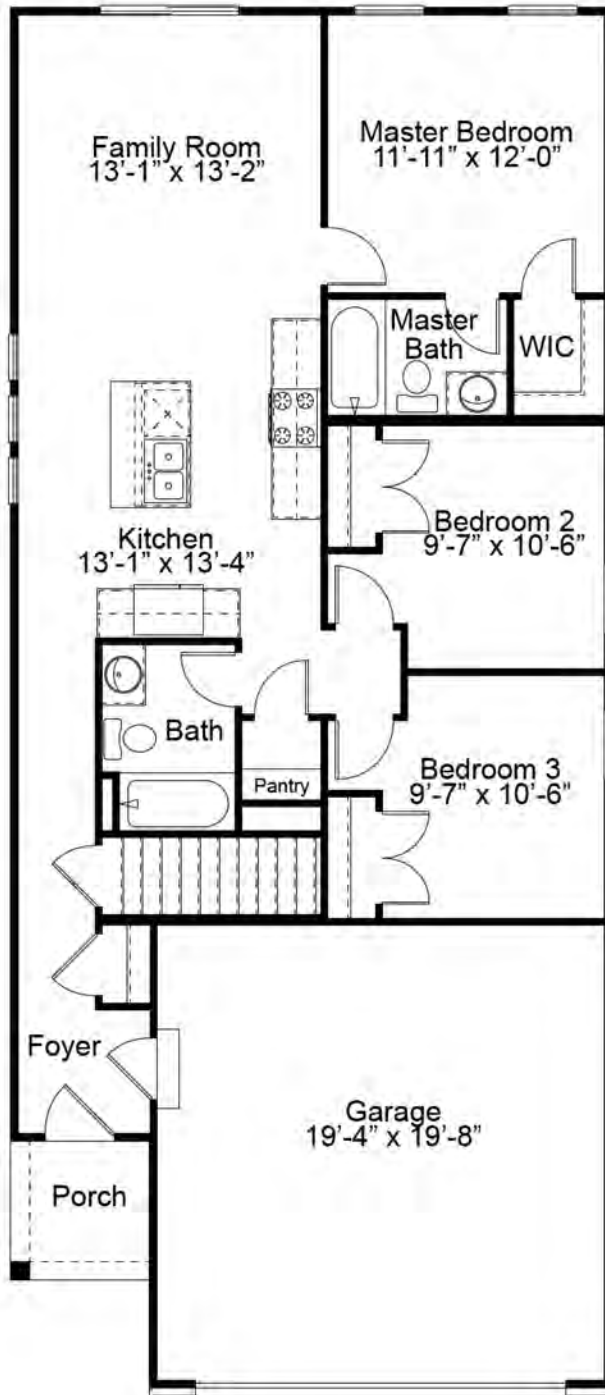
# The Essex Ranch Floor Plan

## FIRST FLOOR PLAN





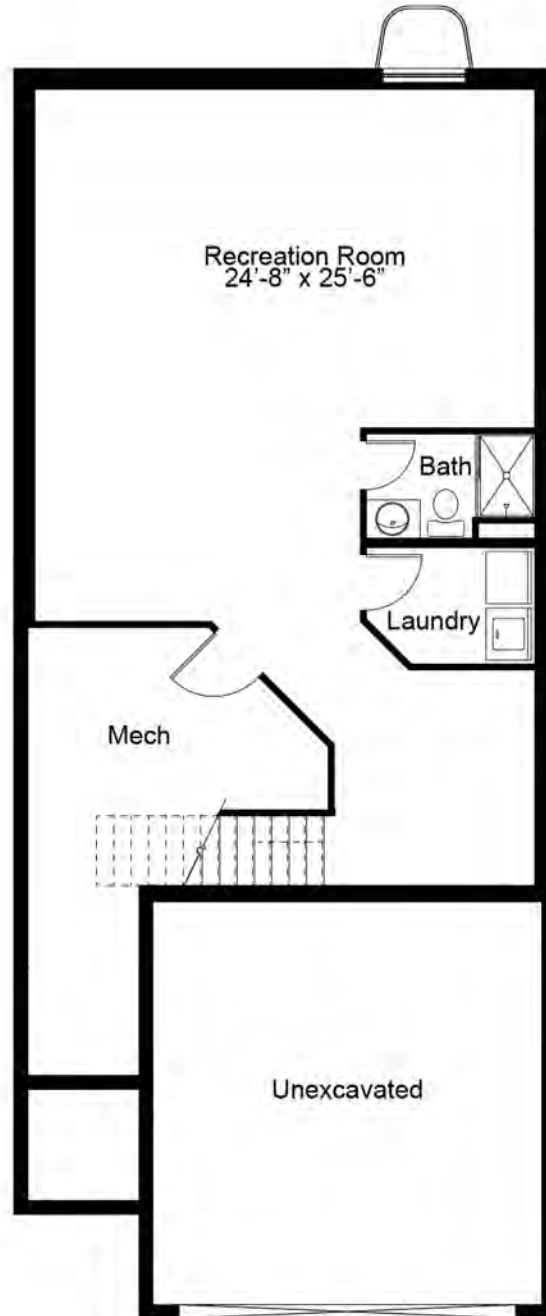
3 BEDROOM OPTION



Optional First Floor Laundry w/ 3 Bedroom Plan

# The Essex Ranch Floor Plan

## OPTIONAL FINISHED LOWER LEVEL



695 Trade Center Boulevard | Chesterfield | MO | 63005 | [FandFHomes.com](http://FandFHomes.com)



Fischer & Frichtel Custom Homes has a policy of continuous improvements of products and reserves the right to make improvements or changes on products and prices without notice. Homes built in this community are built in accordance with the standard features of this community and may differ from similar plans offered in other Fischer & Frichtel developments. Floor plans and exterior designs may show options not included in the base price. All square footages are approximate and may vary from actual plan dimensions.



Rev 11-23-2020