

THE FAIRFAX

This 1.5 story villa home features a spacious open concept floor plan, a main floor master suite and laundry room, with additional bedrooms, large loft and bonus area on the second floor. Several enhancement options are available including, a screened porch, dual second floor master suite, expanded living room and optional finished lower level.

DETAILS:

- 1.5 Story Plan
- 3 Bedrooms
- 2.5 Baths
- 2,113 Square Feet
- 2 Car Garage

The elevations on this brochure are an artist's conception and may vary slightly from actual construction. Cupolas, dormers, and other exterior detailing are optional. Please be sure to review actual blueprints with Community Sales Manager for specific plan and elevation details.

Windswept Collection

BASE ELEVATION



ELEVATION I



ELEVATION II

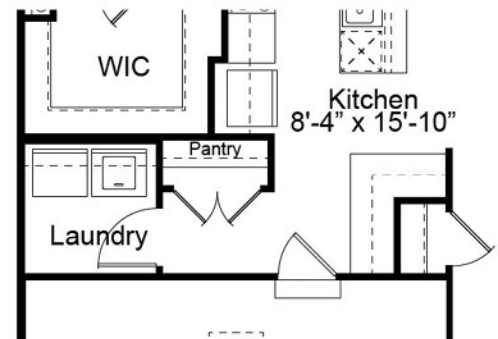
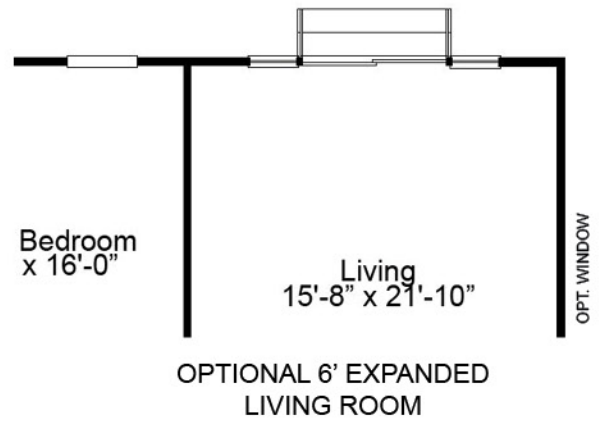
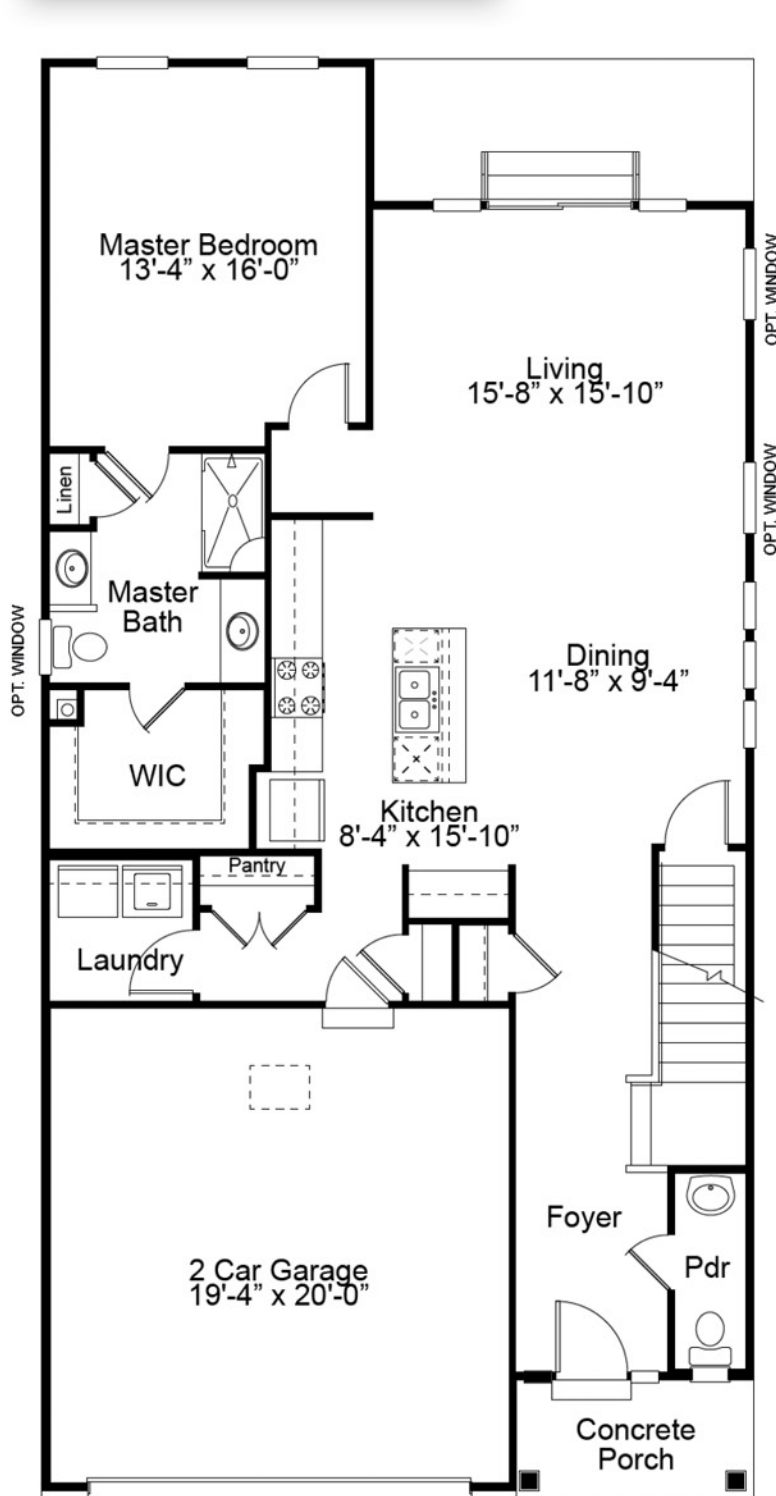


ELEVATION III

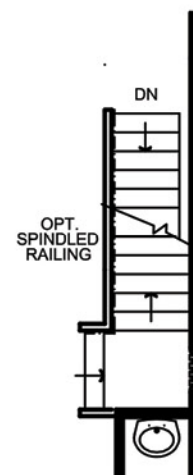


The Fairfax 1.5 Story Floor Plan

FIRST FLOOR PLAN

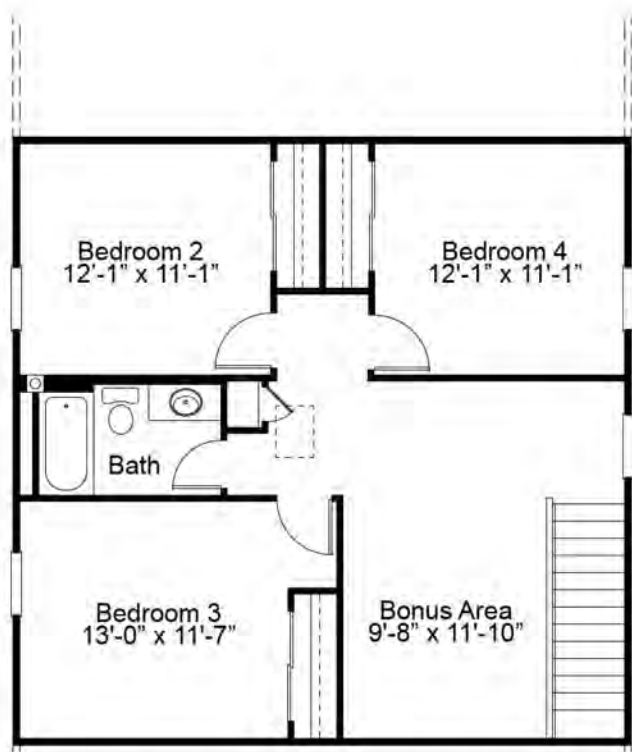
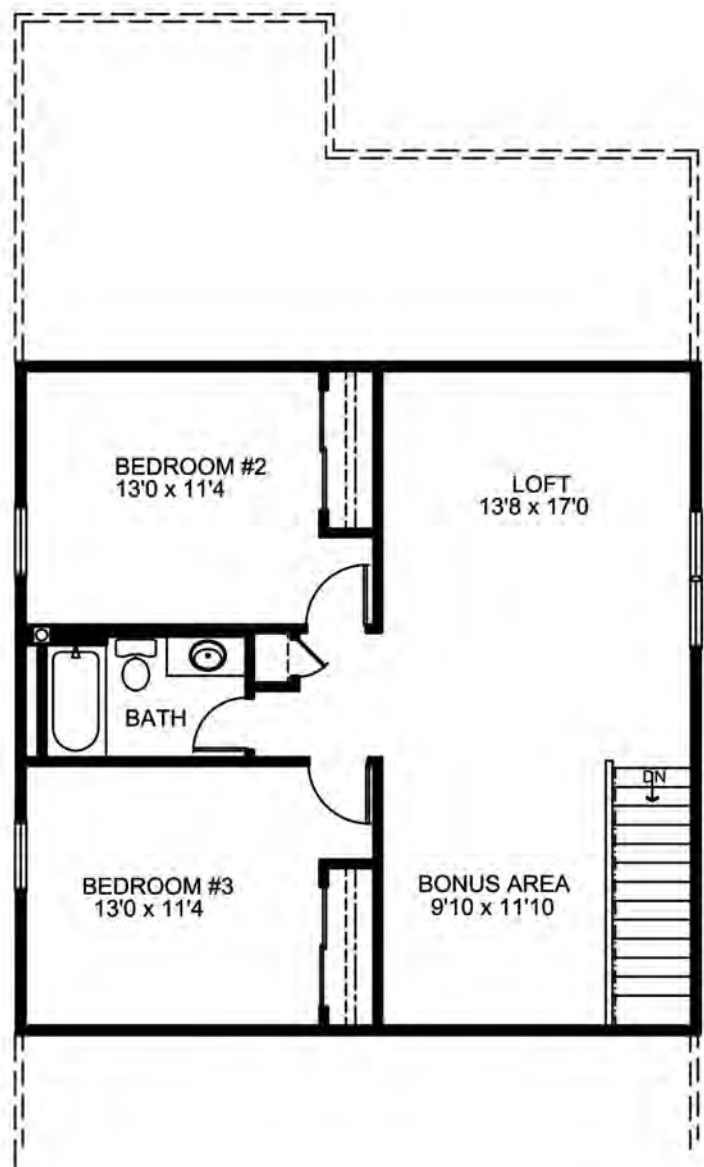


OPTIONAL KEY DROP

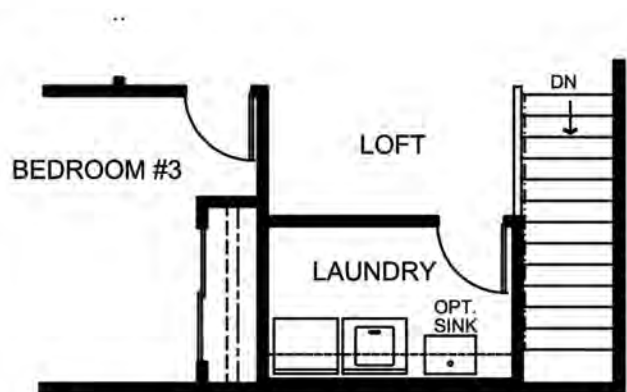


OPTIONAL OPEN STAIR

SECOND FLOOR PLAN



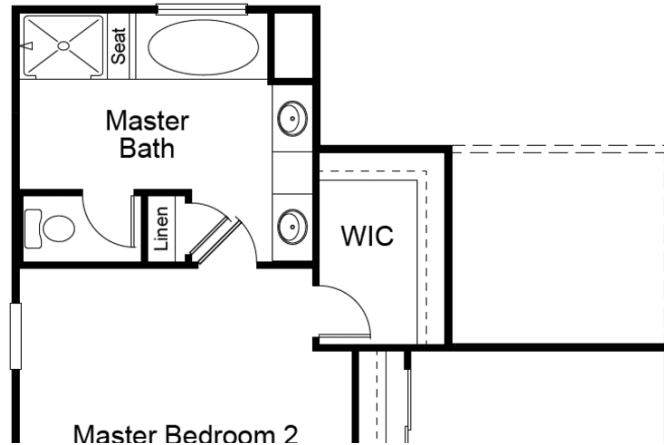
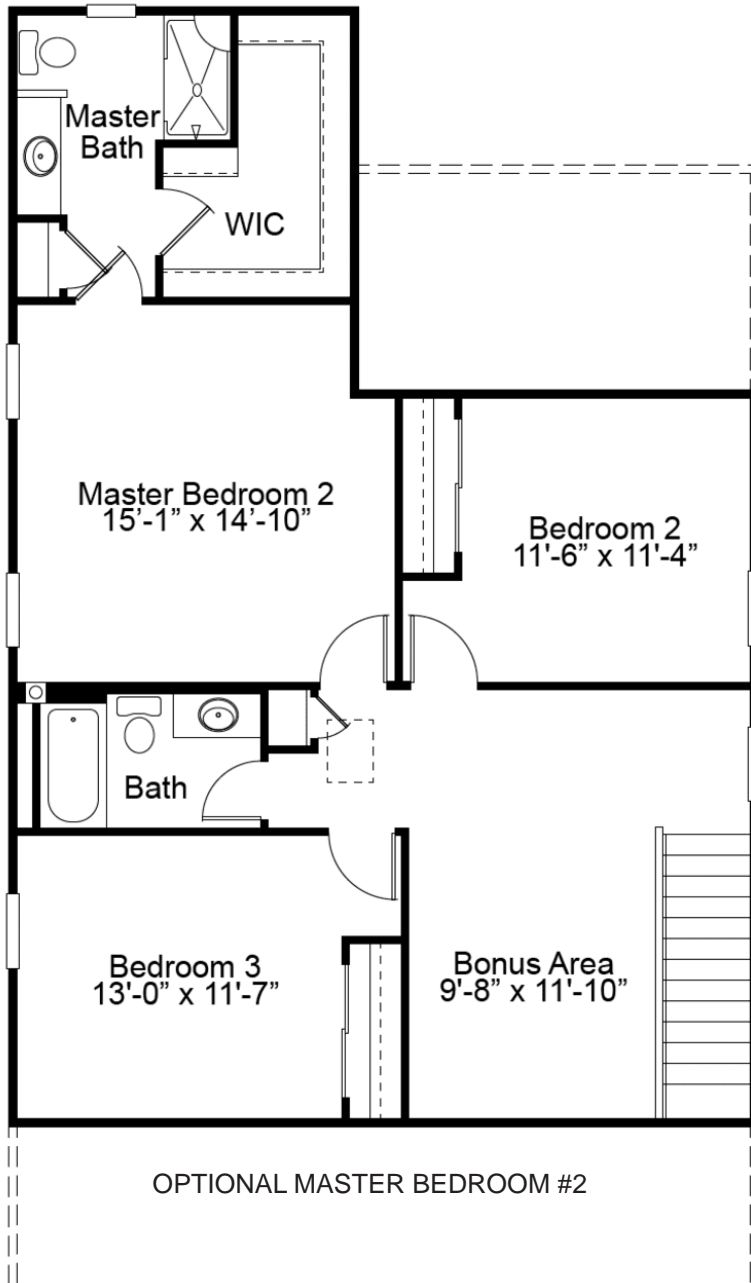
OPTIONAL 4 BEDROOM PLAN



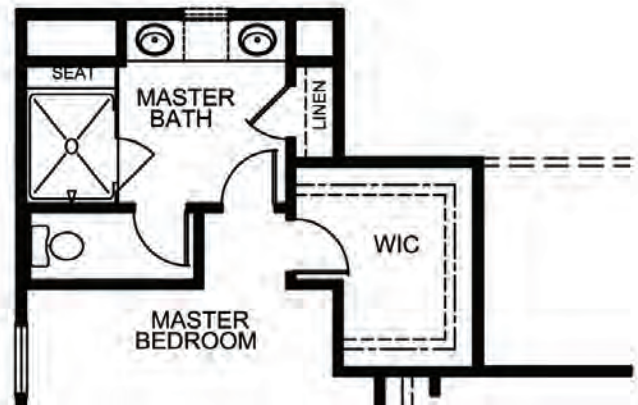
OPTIONAL SECOND FLOOR LAUNDRY

The Fairfax 1.5 Story Floor Plan

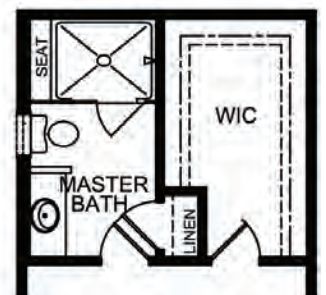
OPTIONAL SECOND FLOOR PLAN



Master Bedroom 2
OPTIONAL LUXURY MASTER BATHROOM W/
OPTIONAL MASTER BEDROOM #2



OPTIONAL SPA MASTER BATHROOM
W/ OPTIONAL BEDROOM #2



OPTIONAL SPA BATH



OPTIONAL MASTER BATH

695 Trade Center Boulevard | Chesterfield | MO | 63005 | FandFHomes.com



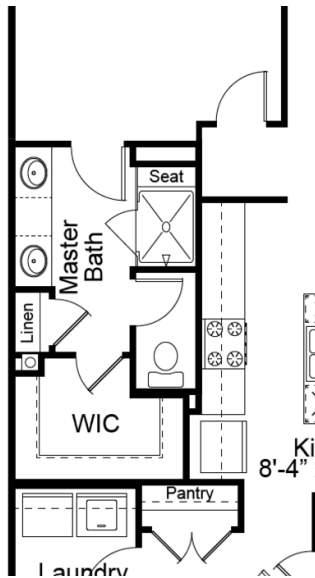
Fischer & Frichtel Custom Homes has a policy of continuous improvements of products and reserves the right to make improvements or changes on products and prices without notice. Homes built in this community are built in accordance with the standard features of this community and may differ from similar plans offered in other Fischer & Frichtel developments. Floor plans and exterior designs may show options not included in the base price. All square footages are approximate and may vary from actual plan dimension



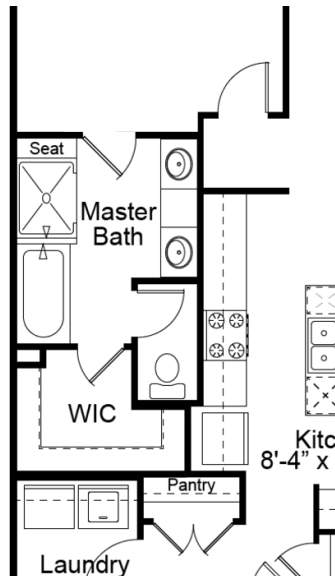
REV 3-18-2020

The Fairfax 1.5 Story Floor Plan

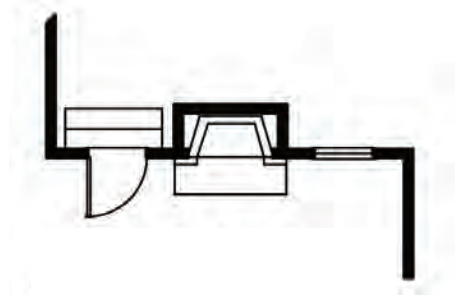
FIRST FLOOR ENHANCEMENT OPTIONS



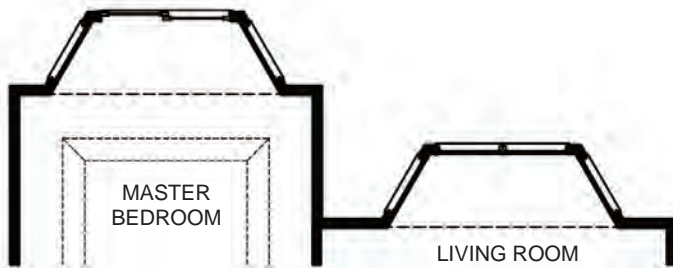
OPTIONAL SPA MASTER BATH



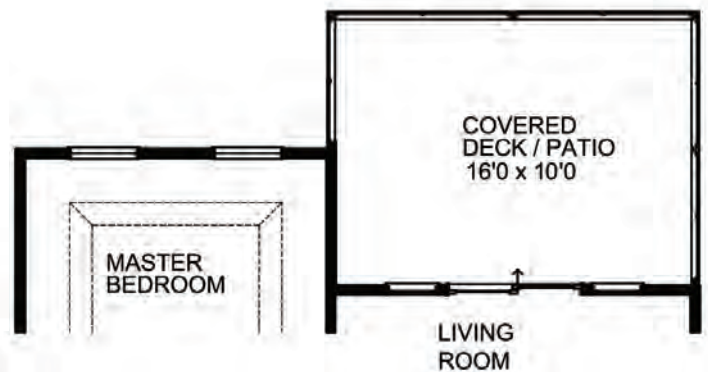
OPTIONAL LUXURY MASTER BATH



OPTIONAL GAS FIREPLACE IN LIVING ROOM



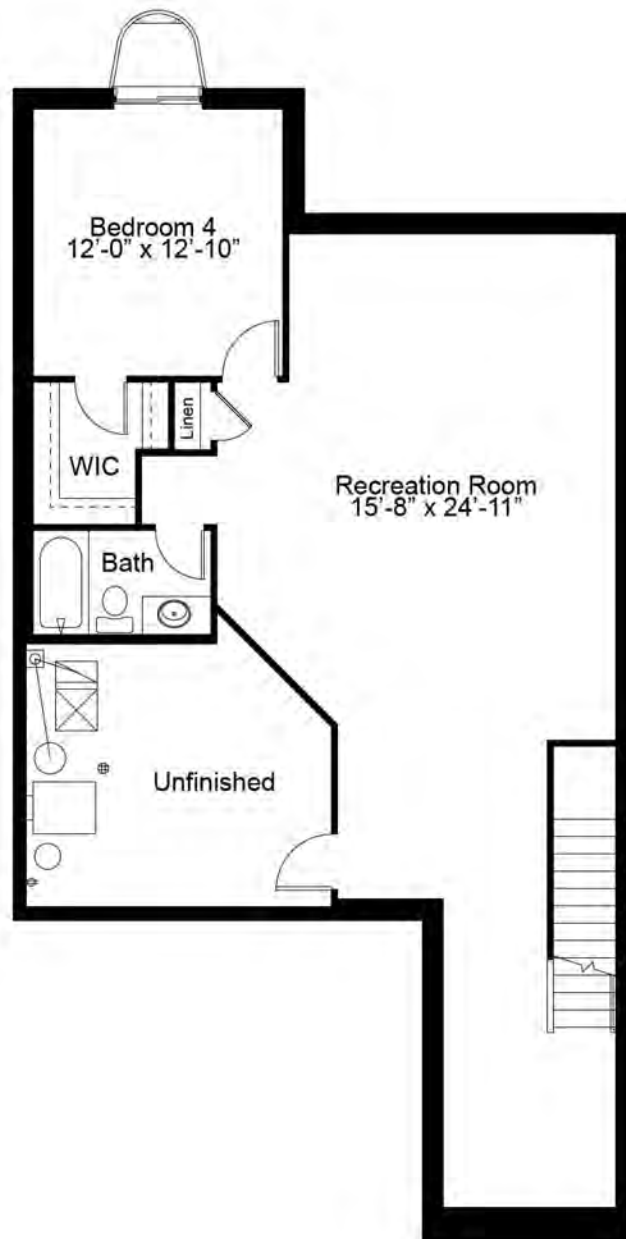
OPTIONAL BAY WINDOWS IN MASTER BEDROOM AND LIVING ROOM



OPTIONAL COVERED DECK/PATIO

The Fairfax 1.5 Story Floor Plan

OPTIONAL FINISHED LOWER LEVEL



695 Trade Center Boulevard | Chesterfield | MO | 63005 | FandFHomes.com
Fischer & Fichtel Custom Homes has a policy of continuous improvements of products and reserves the right to make improvements or changes on products and prices without notice. Homes built in this community are built in accordance with the standard features of this community and may differ from similar plans offered in other Fischer & Fichtel developments. Floor plans and exterior designs may show options not included in the base price. All square footages are approximate and may vary from actual plan dimensions.



Rev 3-12-2021