

## THE ASHLAND

The Ashland is a 2 bedroom, 2 bath, villa-style ranch home with over 1,300 sq. ft. of living space. This open floor plan features an open kitchen, dining and living room area. The spacious master suite, which is situated in the back of the home, includes a large walk-in closet and luxurious master bath with dual sinks and a linen closet. A covered deck or patio, gas fireplace, study, finished lower level and more may be added to customize this beautiful home to your liking.

**DETAILS:**

Villa-Style Ranch Plan

2 Bedrooms

2 Baths

1,347 Square Feet

2 Car Garage

The elevations on this brochure are an artist's conception and may vary slightly from actual construction. Cupolas, dormers, and other exterior detailing are optional. Please be sure to review actual blueprints with Community Sales Manager for specific plan and elevation details.

BASE ELEVATION



ELEVATION I



ELEVATION II

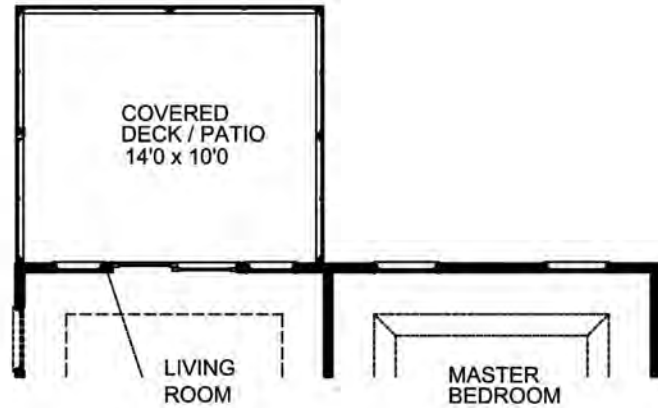


ELEVATION III



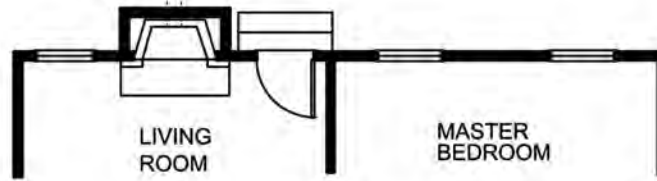
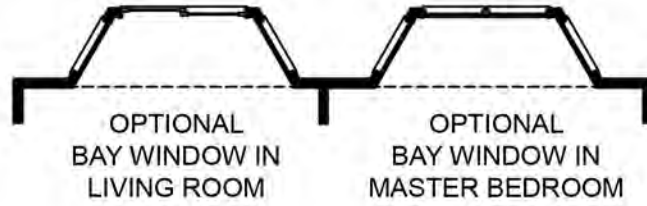
# The Ashland Ranch Floor Plan

## FIRST FLOOR PLAN



OPTIONAL COVERED DECK/PATIO

ENHANCEMENT OPTIONS



OPTIONAL GAS FIREPLACE IN LIVING ROOM

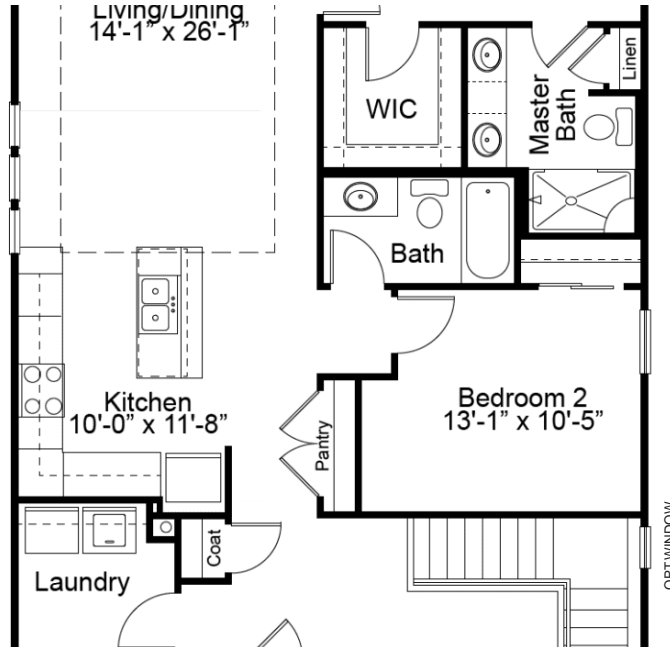


OPTIONAL LUXURY MASTER BATH

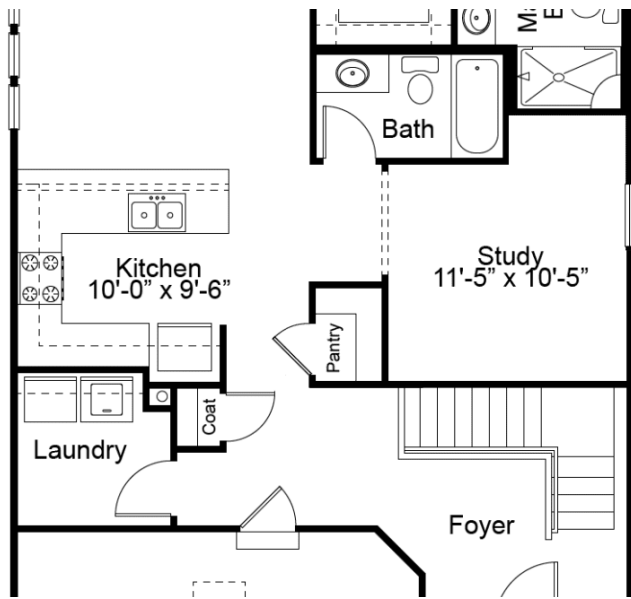


# The Ashland Ranch Floor Plan

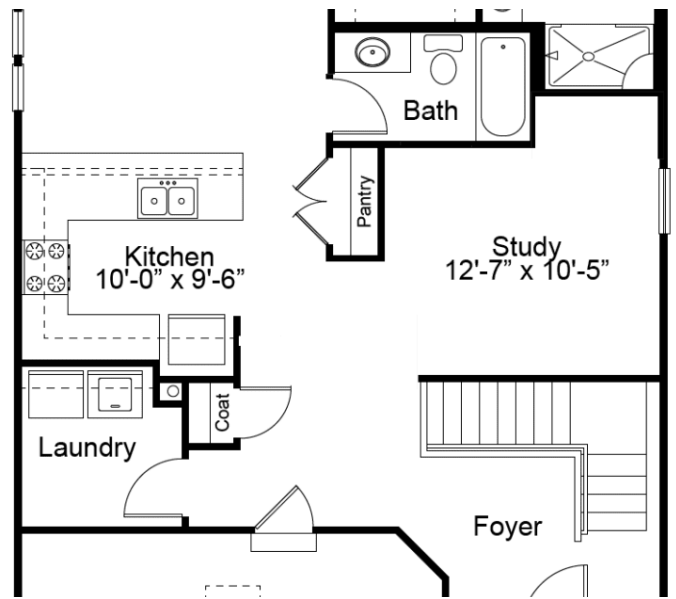
## ENHANCMENT OPTIONS



OPTIONAL KITCHEN LAYOUT



OPTIONAL STUDY



OPTIONAL OPEN STUDY

695 Trade Center Boulevard | Chesterfield | MO | 63005 | [FandFHomes.com](http://FandFHomes.com)

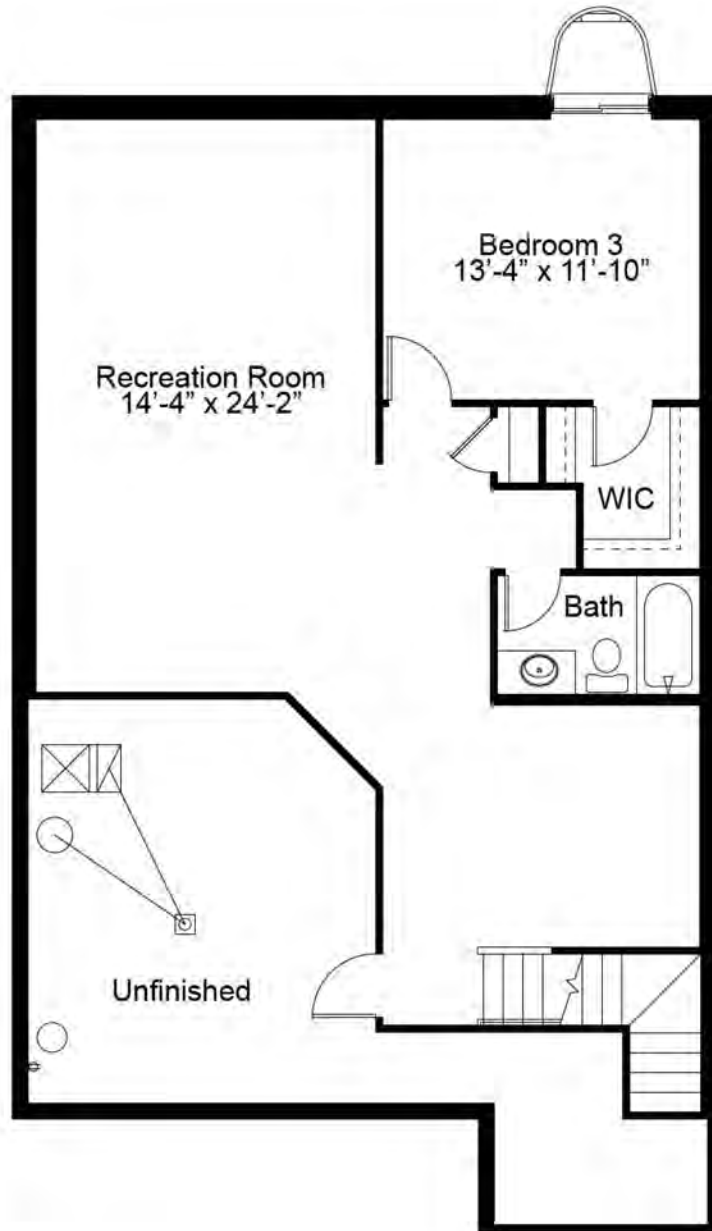


Fischer & Frichtel Custom Homes has a policy of continuous improvements of products and reserves the right to make improvements or changes on products and prices without notice. Homes built in this community are built in accordance with the standard features of this community and may differ from similar plans offered in other Fischer & Frichtel developments. Floor plans and exterior designs may show options not included in the base price. All square footages are approximate and may vary from actual plan dimension



# The Ashland Ranch Floor Plan

## OPTIONAL FINISHED LOWER LEVEL



695 Trade Center Boulevard | Chesterfield | MO | 63005 | [FandFHomes.com](http://FandFHomes.com)



Fischer & Frichtel Custom Homes has a policy of continuous improvements of products and reserves the right to make improvements or changes on products and prices without notice. Homes built in this community are built in accordance with the standard features of this community and may differ from similar plans offered in other Fischer & Frichtel developments. Floor plans and exterior designs may show options not included in the base price. All square footages are approximate and may vary from actual plan dimensions.

