

fischer &
frichtel



A Homebuilding Legacy Since 1945



VILLA COLLECTION

THE ASHLAND RANCH

2 Beds | 2 Baths | 2 Car Garage | 1,347 sq ft

*The elevations on this brochure are an artist's conception and may vary slightly from actual construction.



VILLA COLLECTION
THE ASHLAND
RANCH

2 Beds | 2 Baths | 2 Car Garage | 1,347 sq ft

ELEVATION OPTIONS



Base Elevation



Elevation I



Elevation II

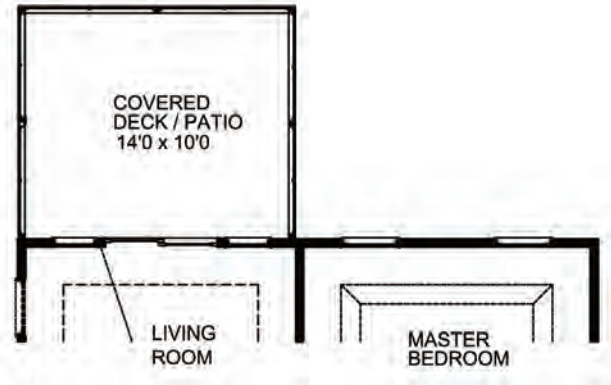
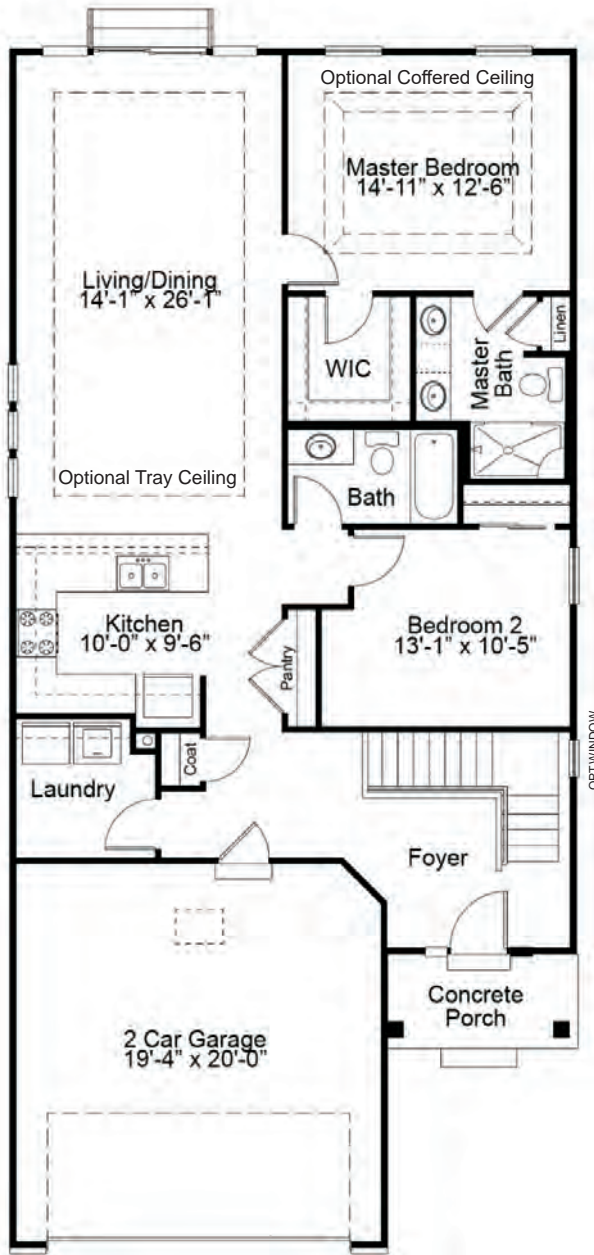


Elevation III



Please be sure to review actual blueprints with Community Sales Manager for complete details. Fischer & Frichtel Custom Homes has a policy of continuous improvements of products and reserves the right to make improvements or changes on products and prices without notice.

ASHLAND FIRST FLOOR PLAN



OPTIONAL COVERED DECK/PATIO

THE ASHLAND

The Ashland is a 2 bedroom, 2 bath, villa-style ranch home with a large open kitchen, dining and living room area. The spacious master suite, which is situated in the back of the home, features a large walk-in closet and luxurious master bath with dual sinks and a linen closet. Enhancement options including a covered deck or patio, gas fireplace, study, finished lower level and more may be added to customize this beautiful home to your liking.



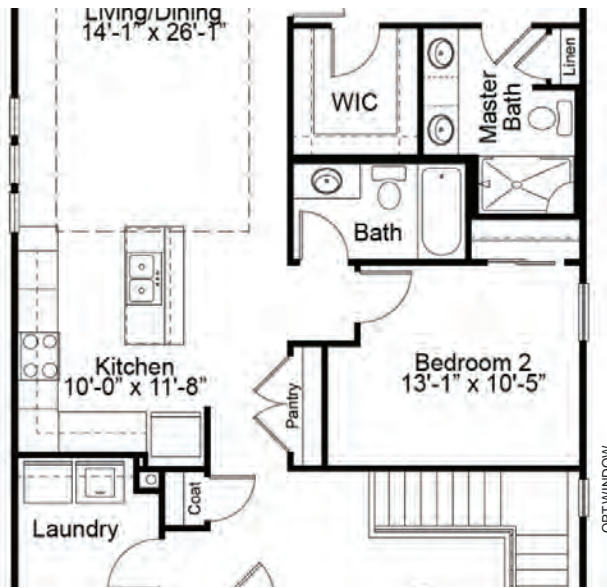
FandFHomes.com
Click on the Interactive Design Tool tab
to virtually explore your dream home



VILLA COLLECTION
THE ASHLAND
 RANCH

2 Beds | 2 Baths | 2 Car Garage | 1,347 sq ft

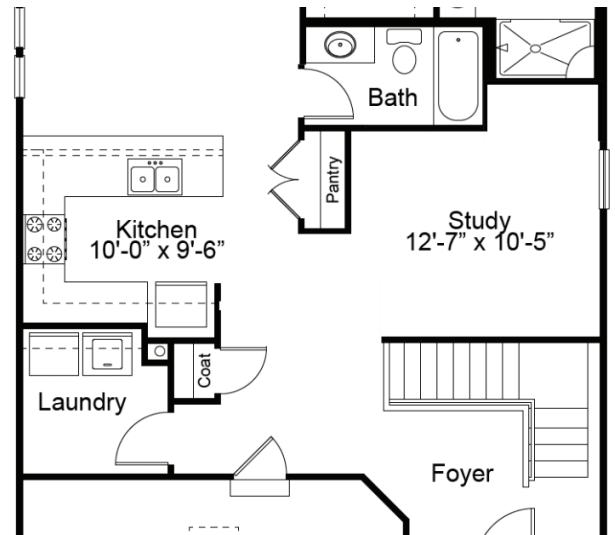
FIRST FLOOR ENHANCEMENT OPTIONS



OPTIONAL KITCHEN LAYOUT

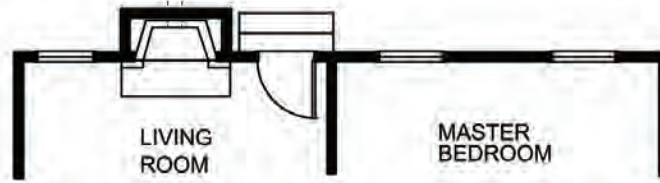
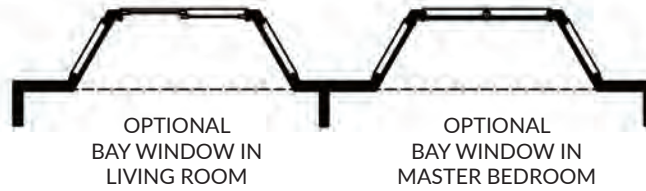


OPTIONAL STUDY

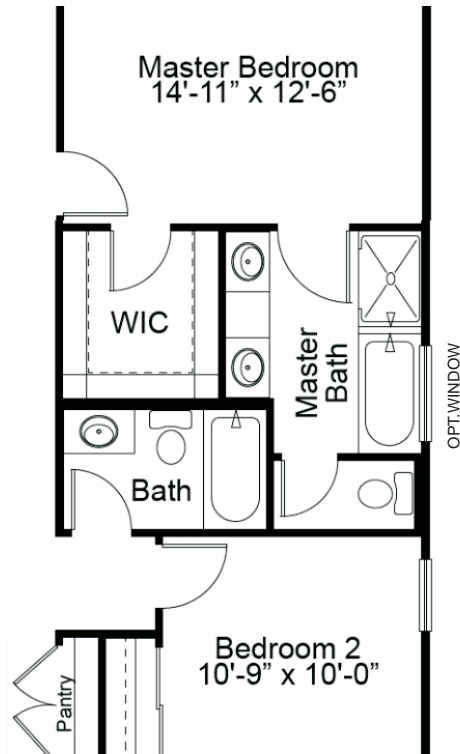


OPTIONAL OPEN STUDY

ASHLAND ENHANCEMENT OPTIONS



OPTIONAL GAS FIREPLACE IN LIVING ROOM



OPTIONAL LUXURY MASTER BATH



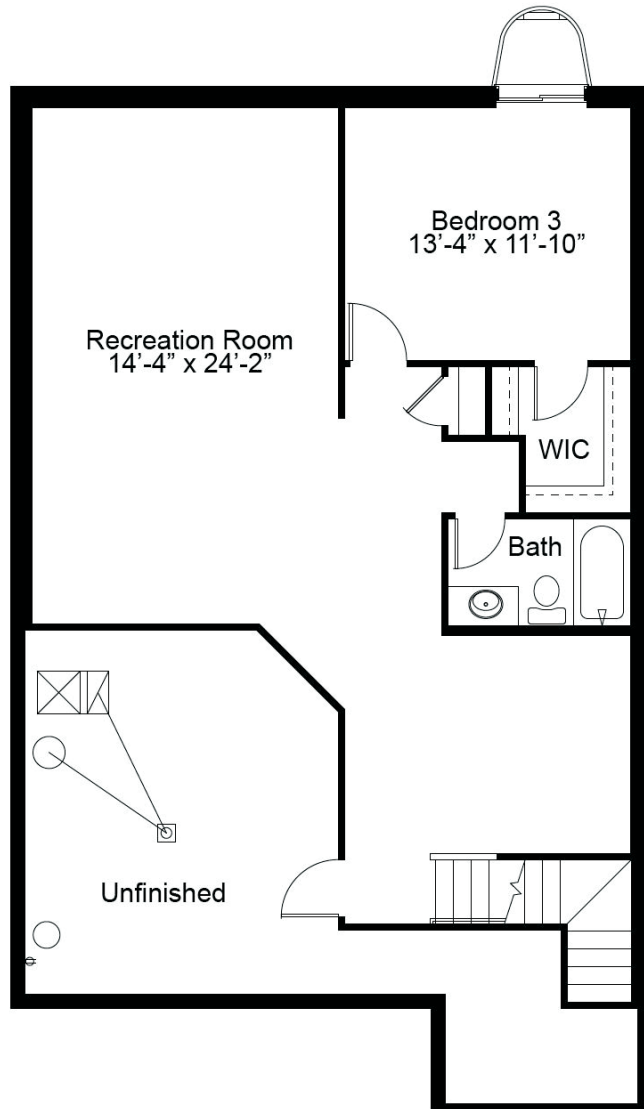
OPTIONAL EXPANDED LIVING ROOM (ADDS 118 SF)



VILLA COLLECTION
THE ASHLAND
RANCH

2 Beds | 2 Baths | 2 Car Garage | 1,347 sq ft

ASHLAND OPTIONAL FINISHED LOWER LEVEL



Floor plans may show options not included in the base price. All dimensions are approximate and may vary with elevation. Please be sure to review actual blueprints with Community Sales Manager for complete details. Fischer & Frichtel Custom Homes has a policy of continuous improvements of products and reserves the right to make improvements or changes on products and prices without notice.

REV 3-23-2023