

fischer & frichtel 

A Homebuilding Legacy Since 1945



MANOR COLLECTION

THE WHITEHALL RANCH

3 Beds | 2 Baths | 2 Car Garage | 1,819 sq ft

*The elevations on this brochure are an artist's conception and may vary slightly from actual construction.



MANOR COLLECTION
THE WHITEHALL
RANCH

3 Beds | 2 Baths | 2 Car Garage | 1,819 sq ft

ELEVATION OPTIONS



Elevation I



Elevation II



Elevation III



Elevation IV



Elevation V

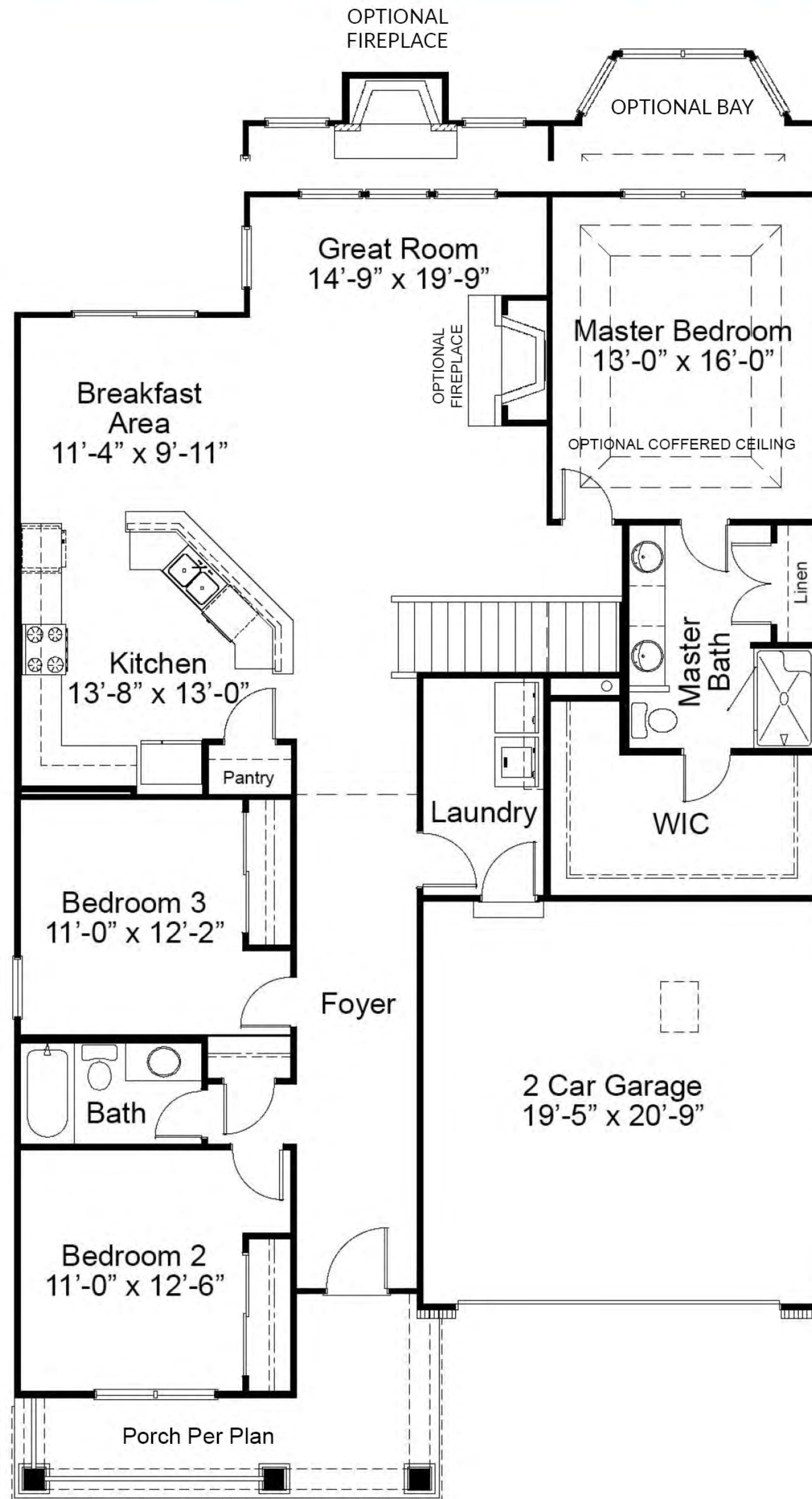


Elevation VI



Please be sure to review actual blueprints with Community Sales Manager for complete details. Fischer & Frichtel Custom Homes has a policy of continuous improvements of products and reserves the right to make improvements or changes on products and prices without notice.

WHITEHALL FIRST FLOOR PLAN



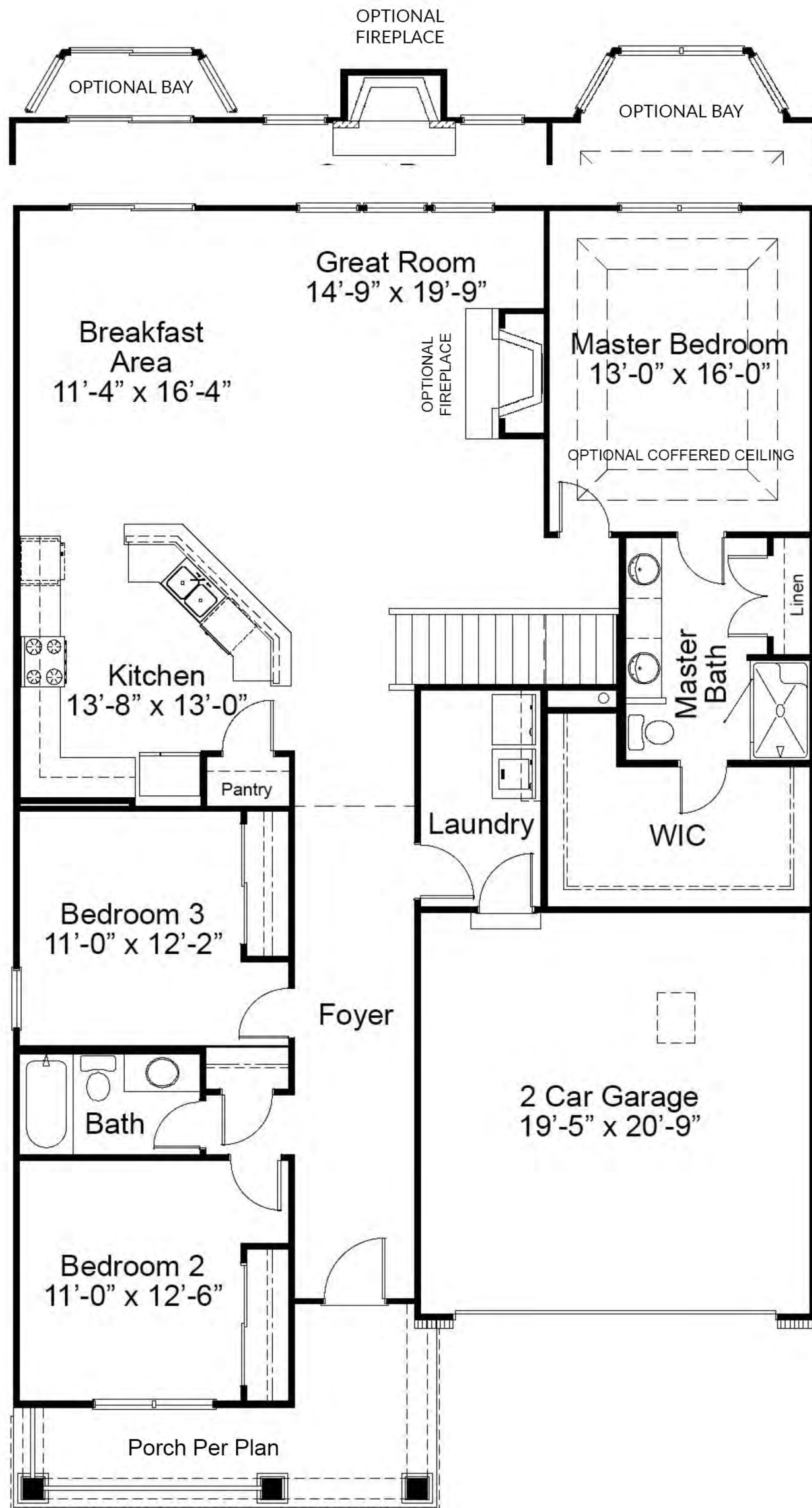
THE WHITEHALL

The Whitehall is a sizable ranch with a open living space, private master bath and two additional bedrooms and full bath. The kitchen opens up to a designated breakfast area and the great room, making the space perfect for relaxing and entertaining. Situated in the rear of the home is the master bedroom and bath with a large walk-in closet and linen closet. Customization options include a finished lower level, expanded breakfast area and powder room.



FandFHomes.com
Click on the Interactive Design Tool tab
to virtually explore your dream home

WHITEHALL OPTIONAL EXPANDED FLOOR PLAN

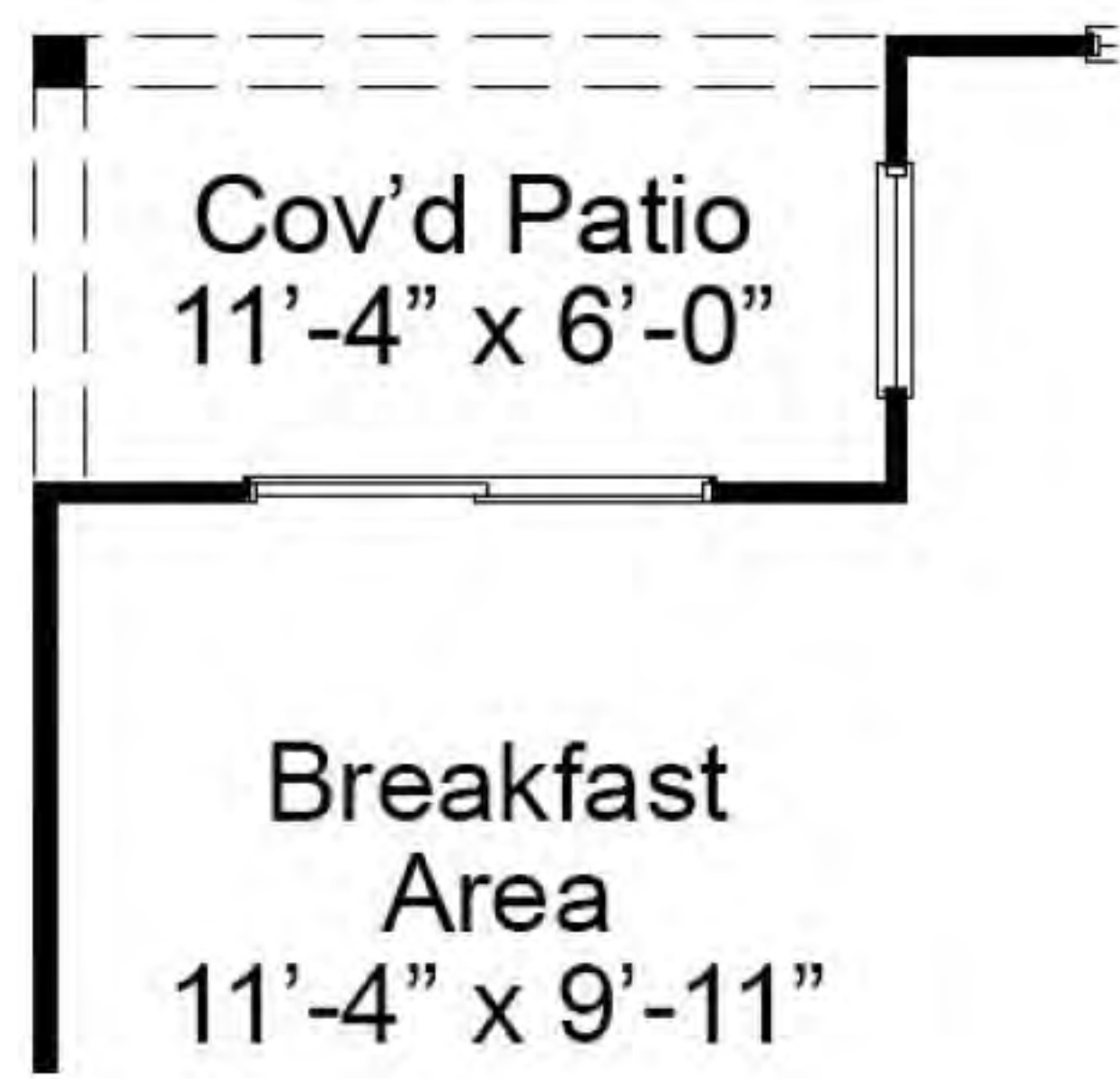




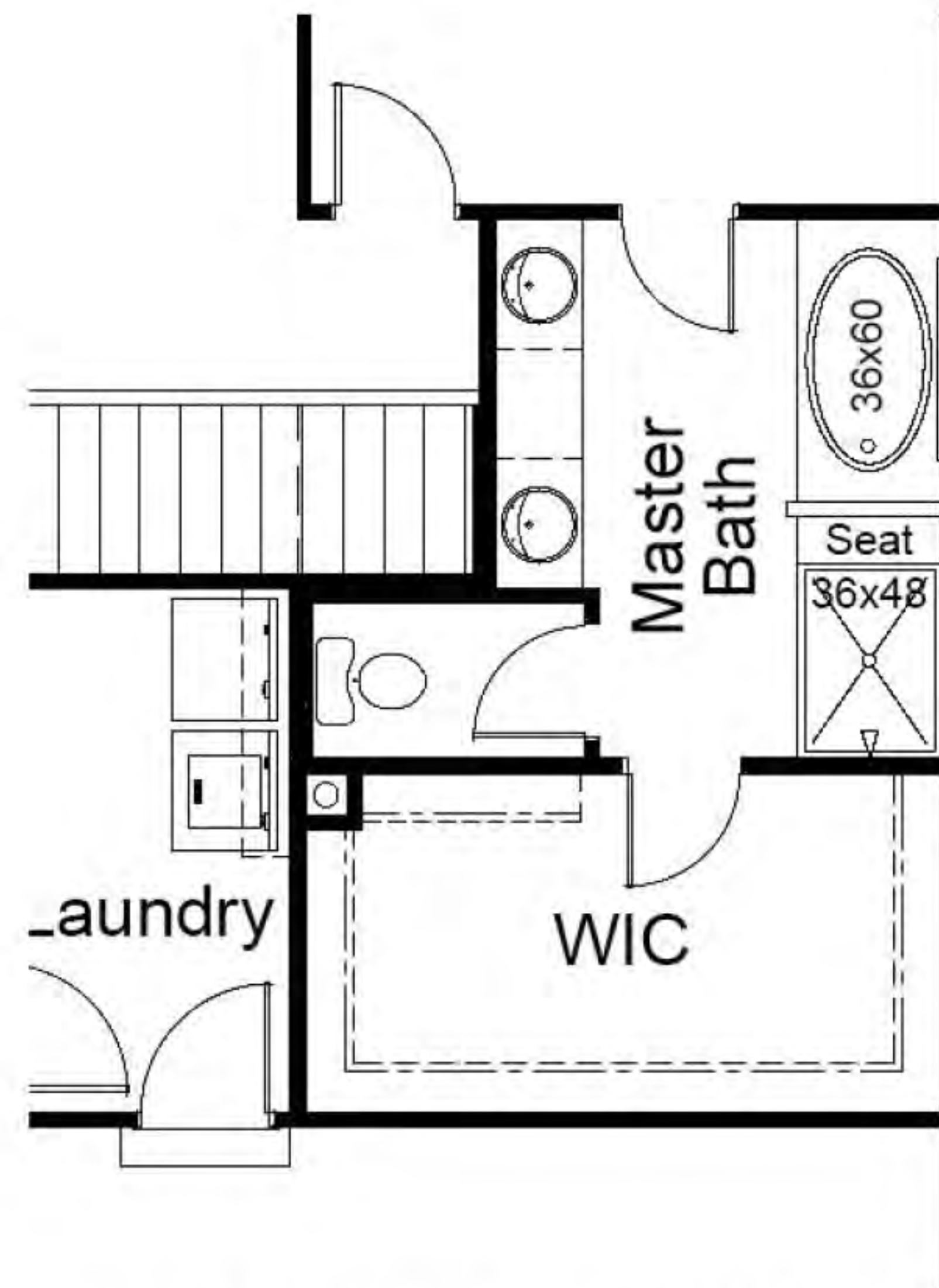
MANOR COLLECTION
THE WHITEHALL
 RANCH

3 Beds | 2 Baths | 2 Car Garage | 1,819 sq ft

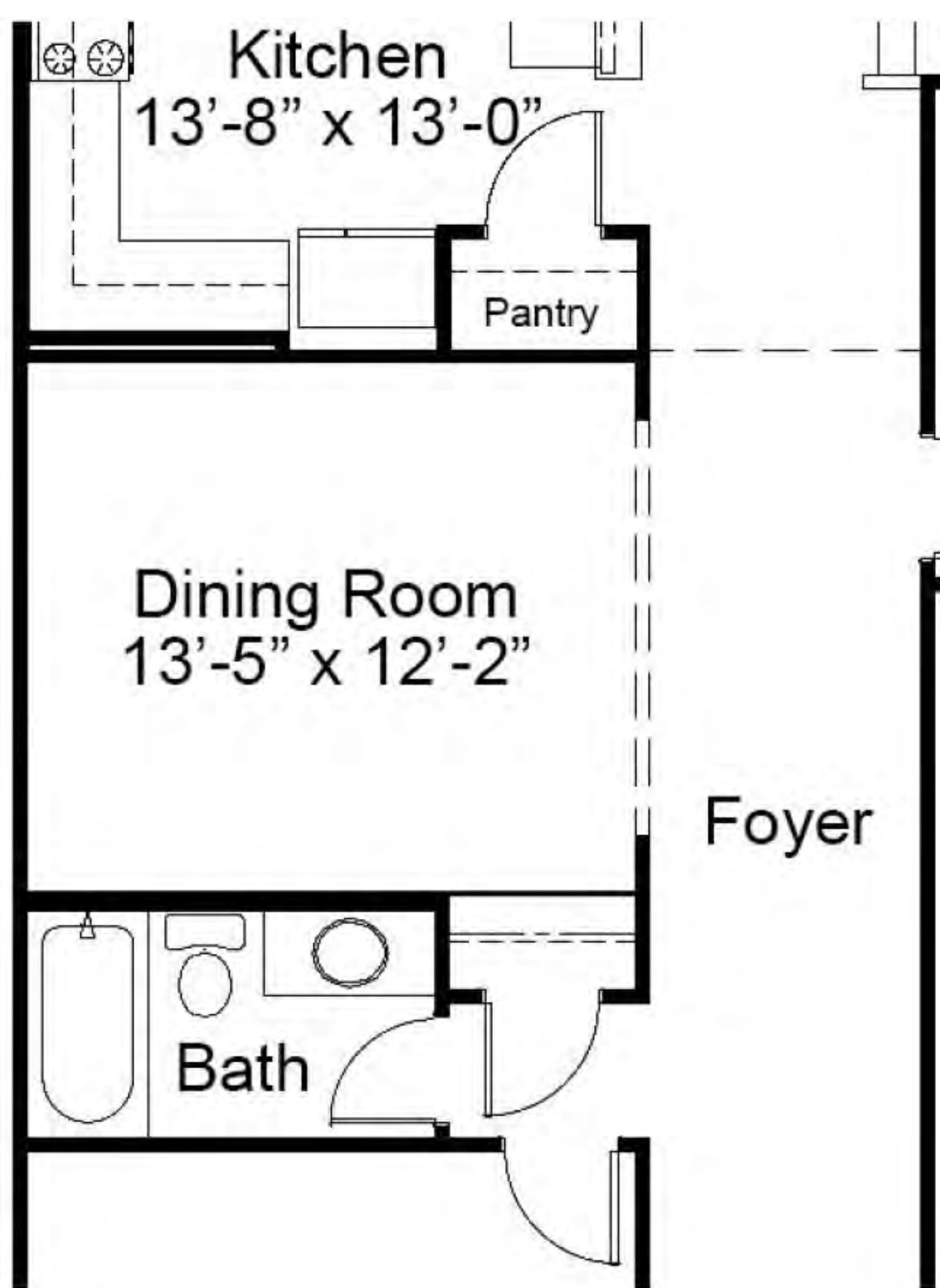
FIRST FLOOR ENHANCEMENT OPTIONS



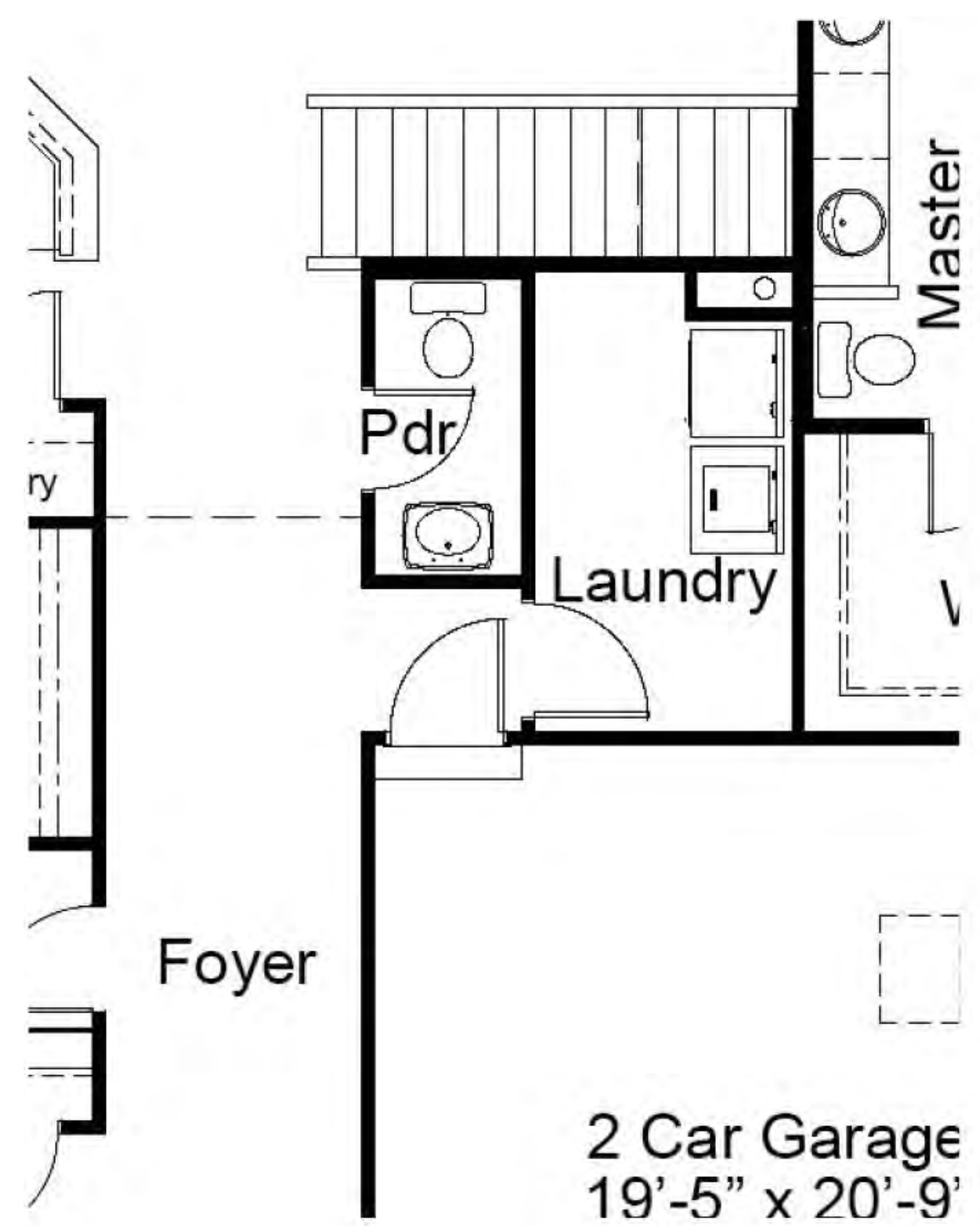
OPTIONAL COVERED PATIO



OPTIONAL LUXURY MASTER BATH



OPTIONAL DINING ROOM ILO
 BEDROOM 3



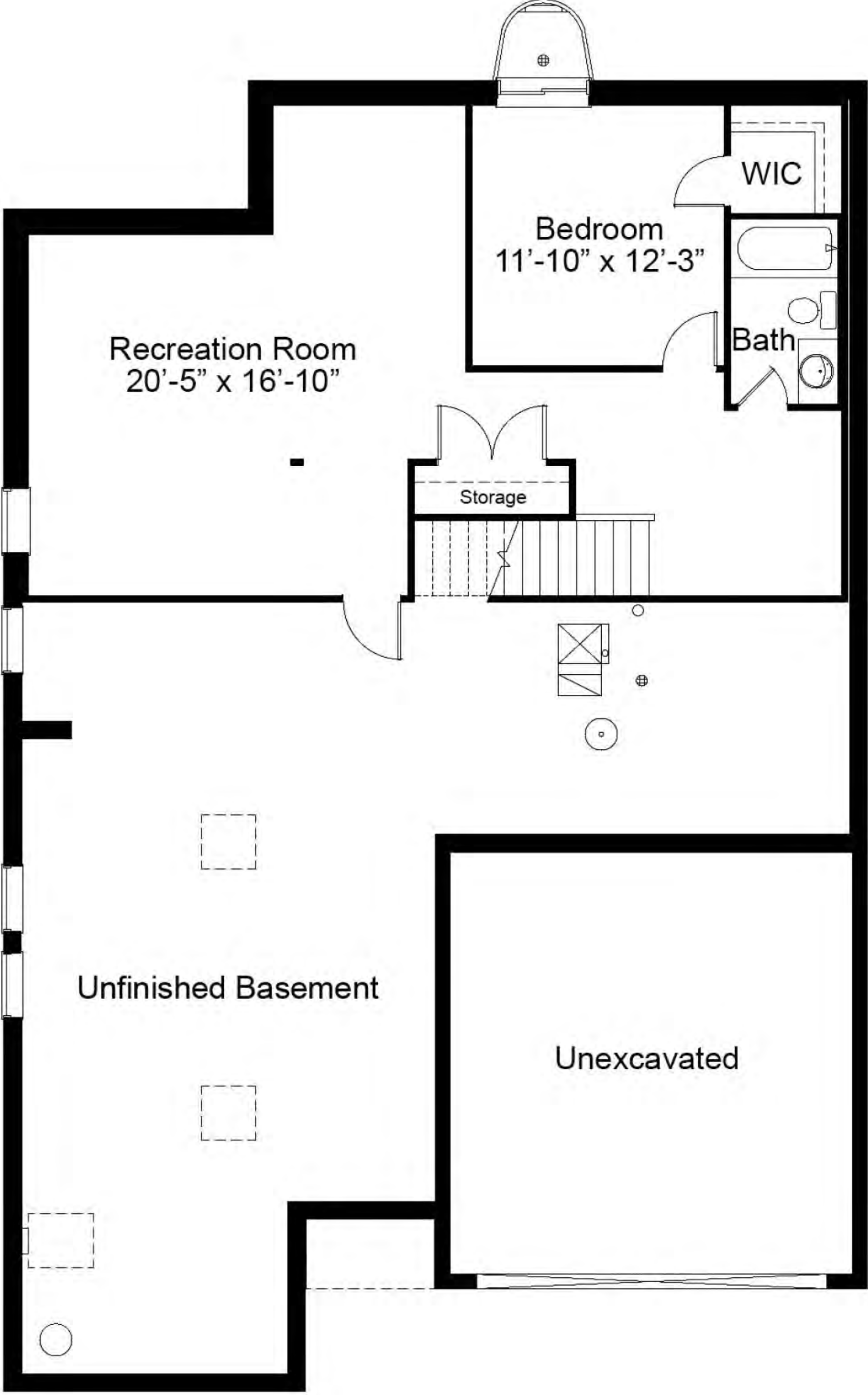
OPTIONAL POWDER ROOM



MANOR COLLECTION
THE WHITEHALL
RANCH

3 Beds | 2 Baths | 2 Car Garage | 1,819 sq ft

WHITEHALL OPTIONAL FINISHED LOWER LEVEL



Floor plans may show options not included in the base price. All dimensions are approximate and may vary with elevation. Please be sure to review actual blueprints with Community Sales Manager for complete details. Fischer & Frichtel Custom Homes has a policy of continuous improvements of products and reserves the right to make improvements or changes on products and prices without notice.