

THE LANSFORD

The Lansford is a ranch home featuring an open kitchen and great room, spacious master bedroom and two additional bedrooms. Options like a dining space, fireplace and finished lower level give you the ability to make this house your own.

DETAILS:

Ranch

3 Bedrooms

2 Baths

1,302 Square Feet

2 Car Garage

Want to create your dream home virtually? Click on our Interactive Design Tool tab at fandfhomes.com

The elevations on this brochure are an artist's conception and may vary slightly from actual construction. Cupolas, dormers, and other exterior detailing are optional. Please be sure to review actual blueprints with Community Sales Manager for specific plan and elevation details.

Manor Collection

ELEVATION I



ELEVATION II



ELEVATION III

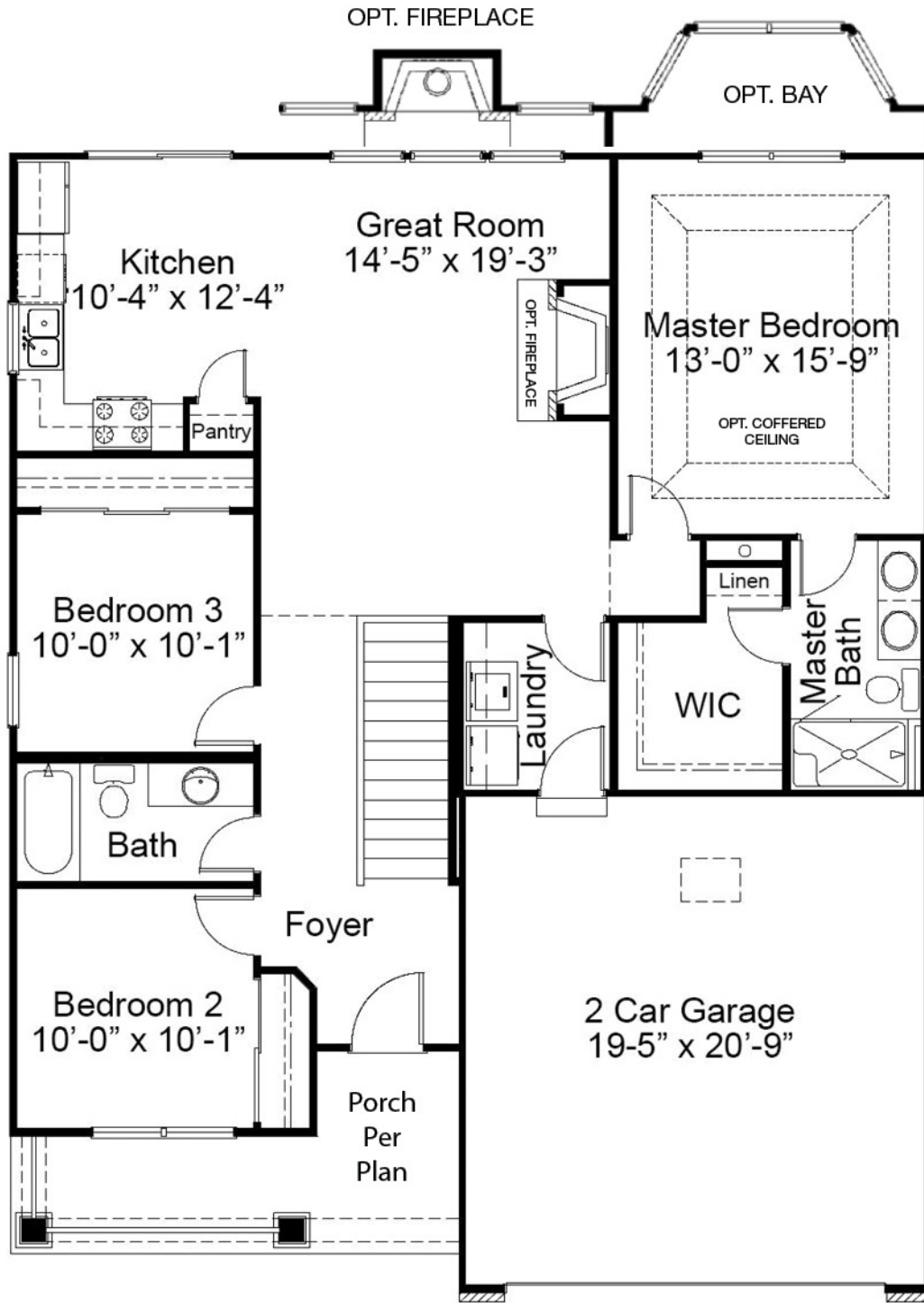


ELEVATION IV

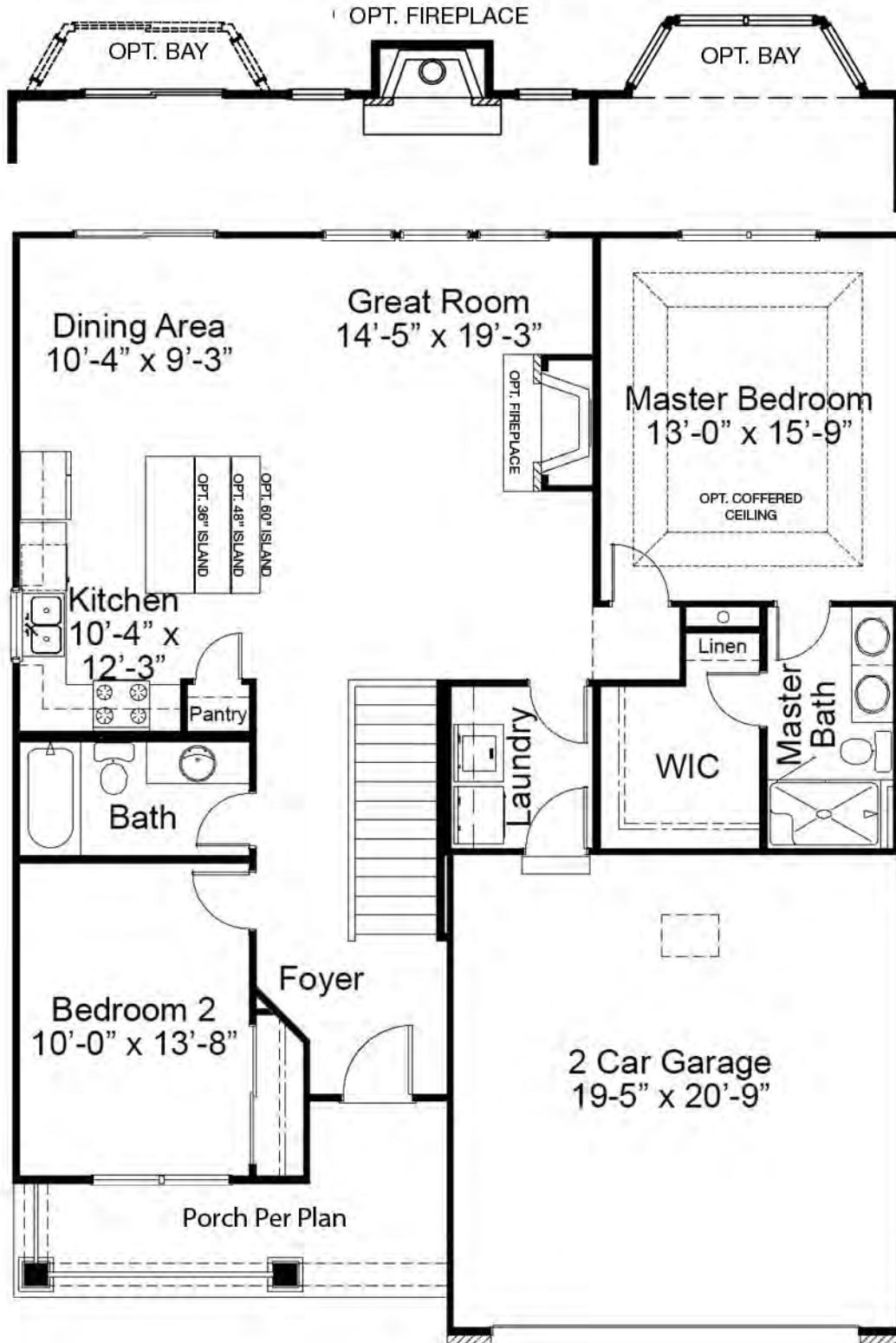


The Lansford Ranch Floor Plan

FIRST FLOOR PLAN

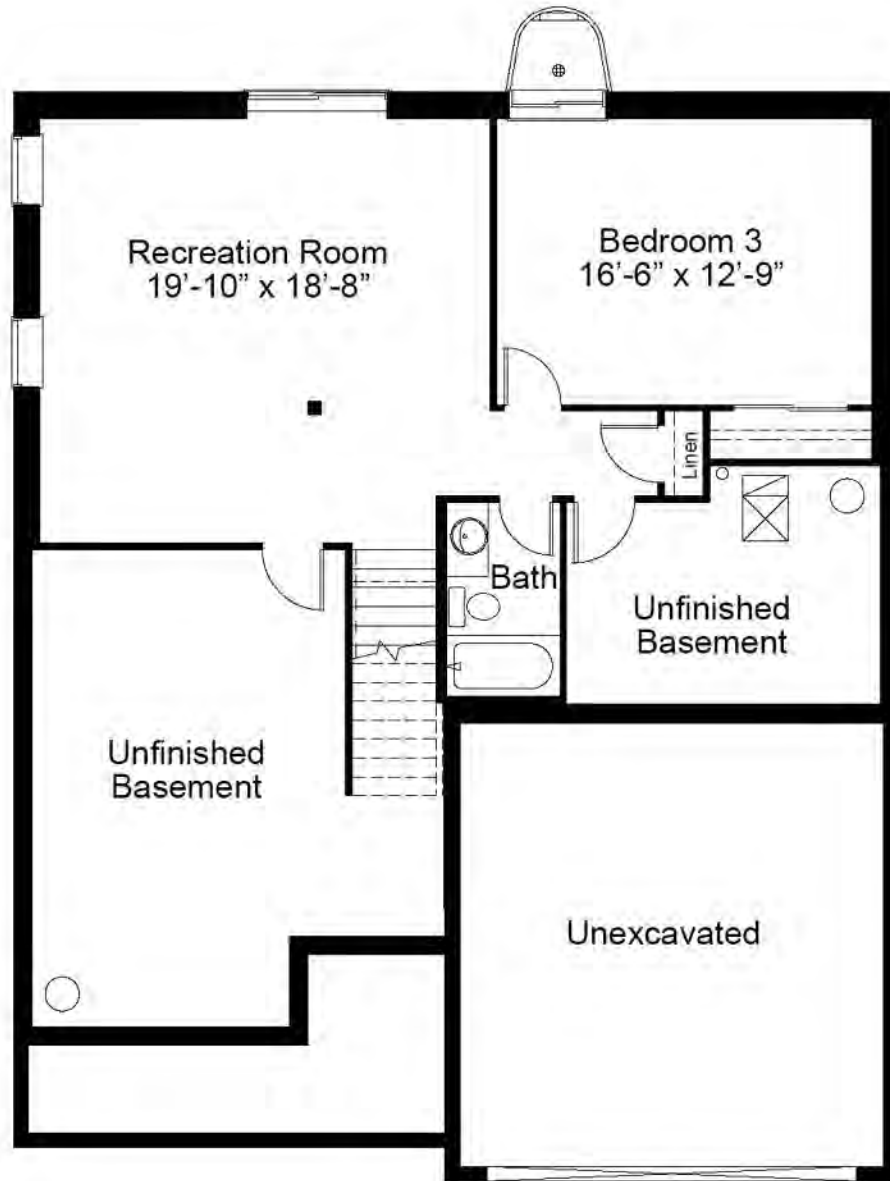


OPTIONAL 2 BEDROOM FLOOR PLAN



The Lansford Ranch Floor Plan

OPTIONAL FINISHED LOWER LEVEL



695 Trade Center Boulevard | Chesterfield | MO | 63005 | FandFHomes.com



Fischer & Frichtel Custom Homes has a policy of continuous improvements of products and reserves the right to make improvements or changes on products and prices without notice. Homes built in this community are built in accordance with the standard features of this community and may differ from similar plans offered in other Fischer & Frichtel developments. Floor plans and exterior designs may show options not included in the base price. All square footages are approximate and may vary from actual plan dimensions



REV 5-21-2021