

## THE BROOKMONT

The Brookmont is a ranch style home with an inviting exterior and large front porch. It features an open concept floor plan, a large master suite and options to add a study, luxury master bath or finished lower level.

**DETAILS:**

Ranch Floor Plan

3 Bedrooms

2 Baths

1,678 Square Feet

2 Car Garage

**Want to create your dream home virtually? Click on our Interactive Design Tool tab at [fandfhomes.com](http://fandfhomes.com)**

The elevations on this brochure are an artist's conception and may vary slightly from actual construction. Cupolas, dormers, and other exterior detailing are optional. Please be sure to review actual blueprints with Community Sales Manager for specific plan and elevation details.

ELEVATION I



ELEVATION II



ELEVATION III



# THE BROOKMONT

## Manor Collection

ELEVATION IV



ELEVATION V



ELEVATION VI



695 Trade Center Boulevard | Chesterfield | MO | 63005 | [FandFHomes.com](http://FandFHomes.com)

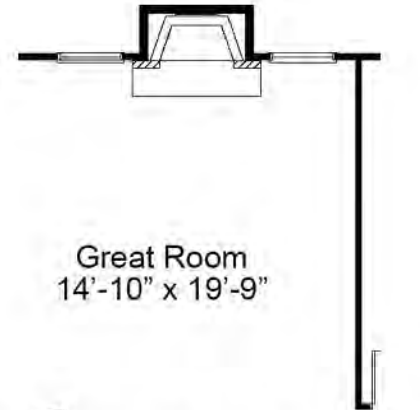
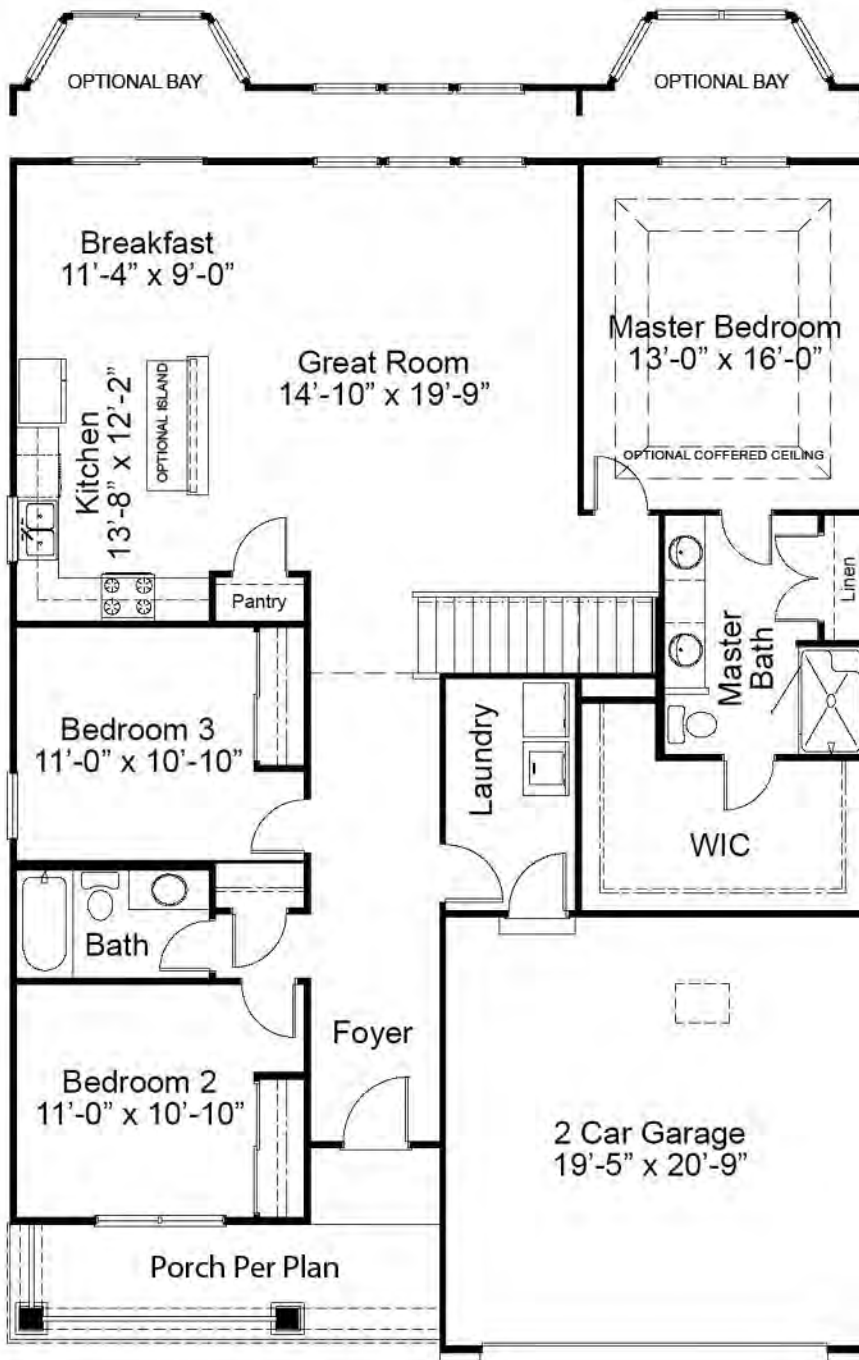


Fischer & Frichtel Custom Homes has a policy of continuous improvements of products and reserves the right to make improvements or changes on products and prices without notice. Homes built in this community are built in accordance with the standard features of this community and may differ from similar plans offered in other Fischer & Frichtel developments. Floor plans and exterior designs may show options not included in the base price. All square footages are approximate and may vary from actual plan dimension



# The Brookmont Ranch Floor Plan

## FIRST FLOOR PLAN



Please be sure to review actual blueprints with Community Sales Manager for complete details. All dimensions are approximate and may vary with elevation. Premium features such as bay windows may be standard or optional depending on community.

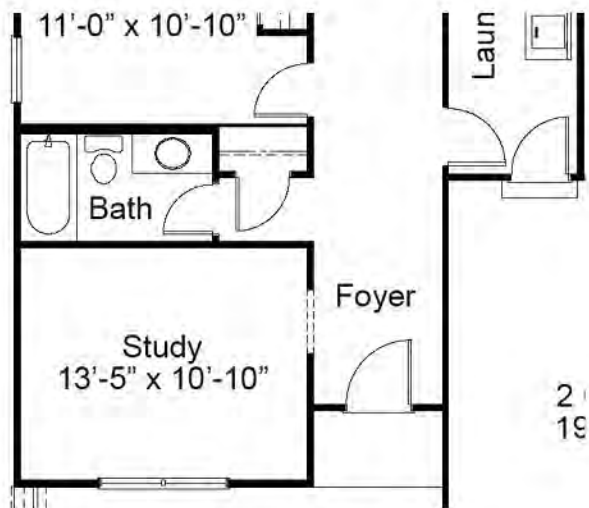
ENHANCEMENT OPTIONS



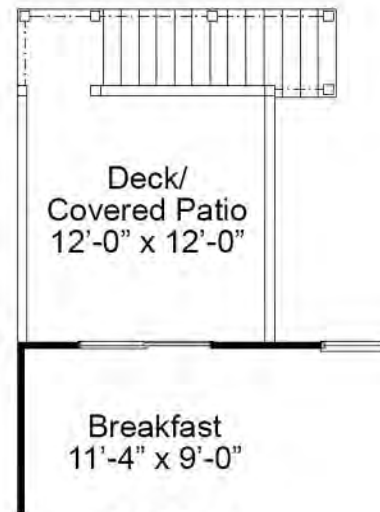
OPTIONAL POWDER ROOM



OPTIONAL LUXURY MASTER BATH



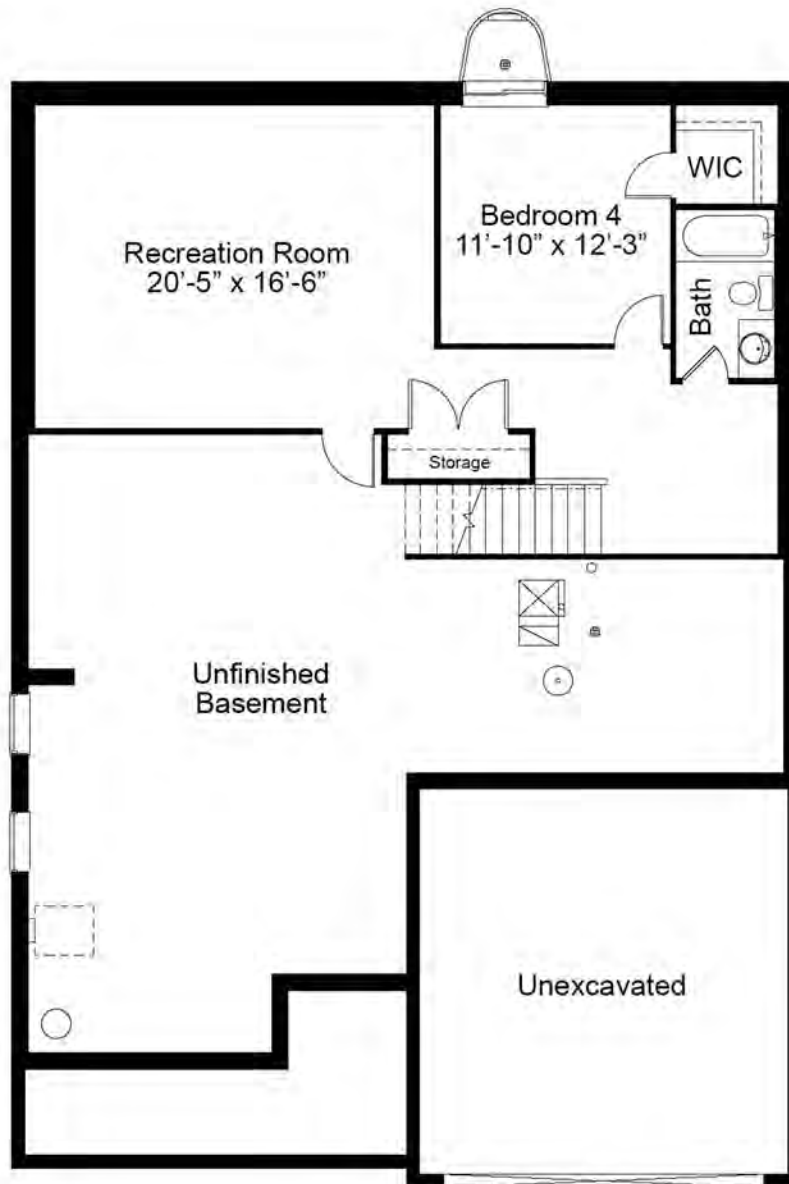
OPTIONAL STUDY ILO BEDROOM 2



OPTIONAL DECK/COVERED PATIO

# The Brookmont Ranch Floor Plan

## OPTIONAL FINISHED LOWER LEVEL



695 Trade Center Boulevard | Chesterfield | MO | 63005 | FandFHomes.com



Fischer & Frichtel Custom Homes has a policy of continuous improvements of products and reserves the right to make improvements or changes on products and prices without notice. Homes built in this community are built in accordance with the standard features of this community and may differ from similar plans offered in other Fischer & Frichtel developments. Floor plans and exterior designs may show options not included in the base price. All square footages are approximate and may vary from actual plan dimensions



REV 5-20-2021