

fischer & frichtel 

A Homebuilding Legacy Since 1945



ESTATE COLLECTION

# THE WYNDHAM

1.5-STORY

---

4 Beds | 3.5 Baths | 3 Car Garage | 3,752 sq ft

---

\*The elevations on this brochure are an artist's conception and may vary slightly from actual construction.





ESTATE COLLECTION  
**THE WYNDHAM**  
1.5-STORY

4 Beds | 3.5 Baths | 3 Car Garage | 3,752 sq ft

**ELEVATION OPTIONS**



Elevation II



Elevation III



Elevation IV



Elevation V



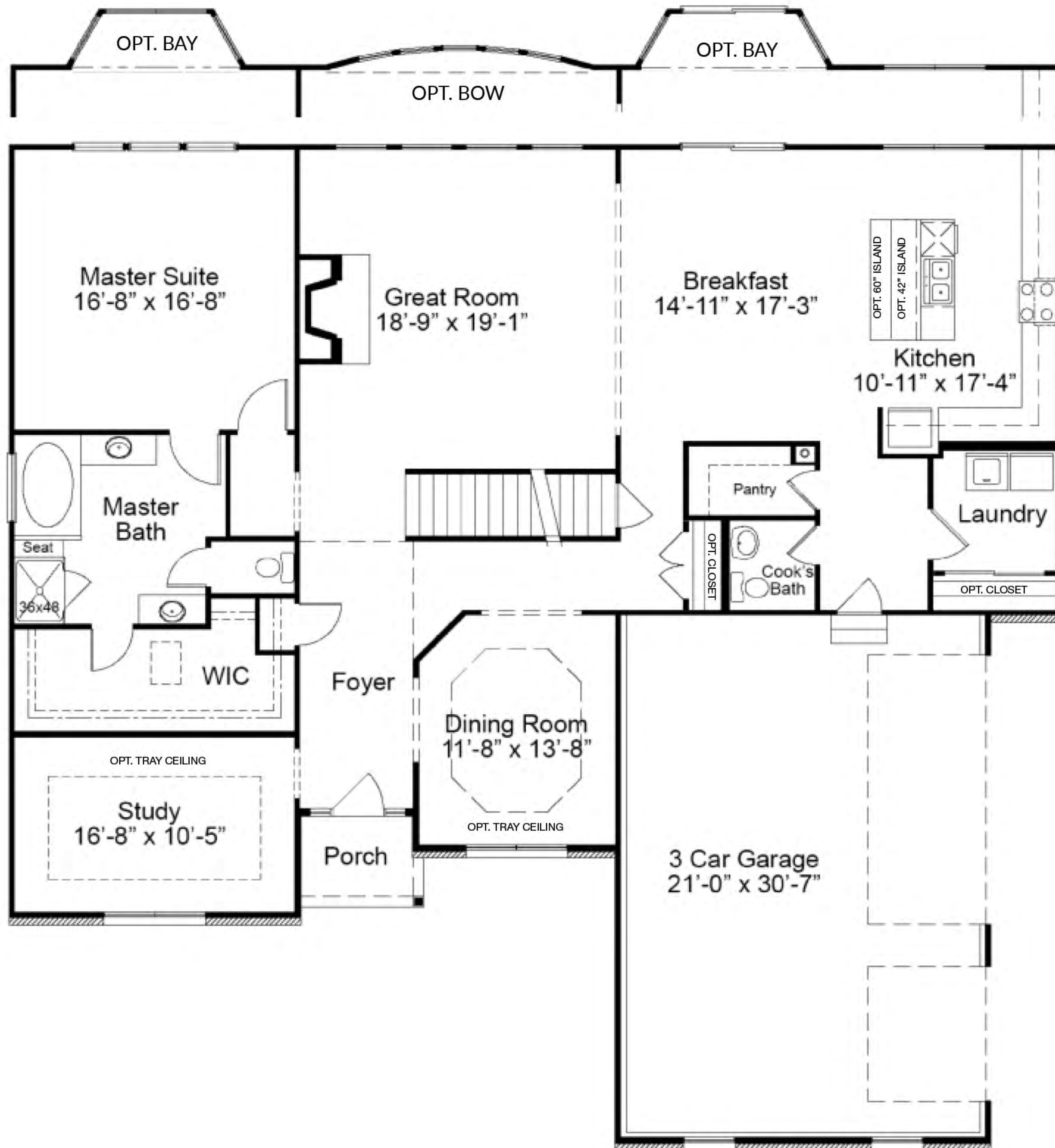
Elevation VI



Please be sure to review actual blueprints with Community Sales Manager for complete details. Fischer & Frichtel Custom Homes has a policy of continuous improvements of products and reserves the right to make improvements or changes on products and prices without notice.



# WYNDHAM FIRST FLOOR PLAN



## THE WYNDHAM

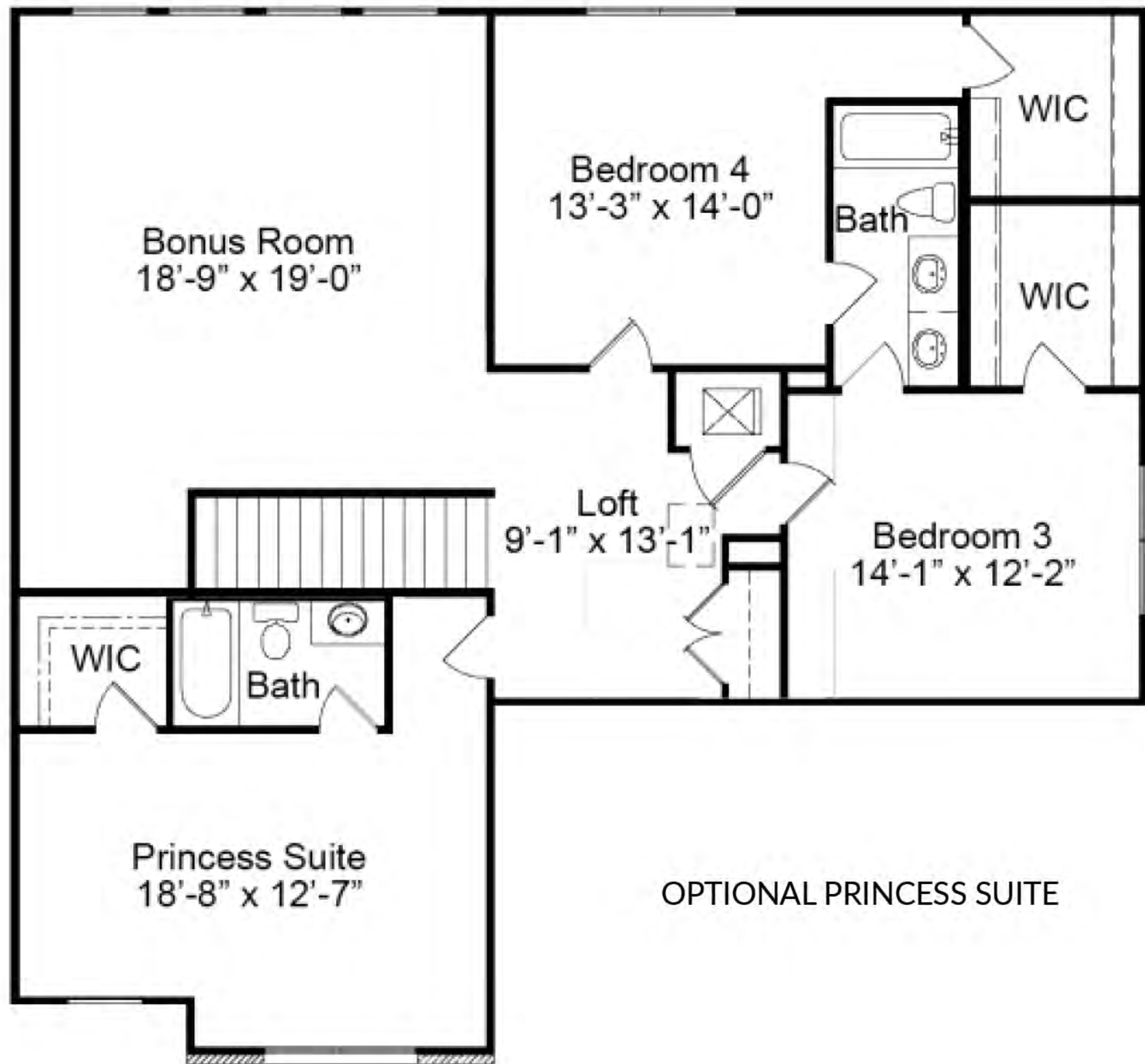
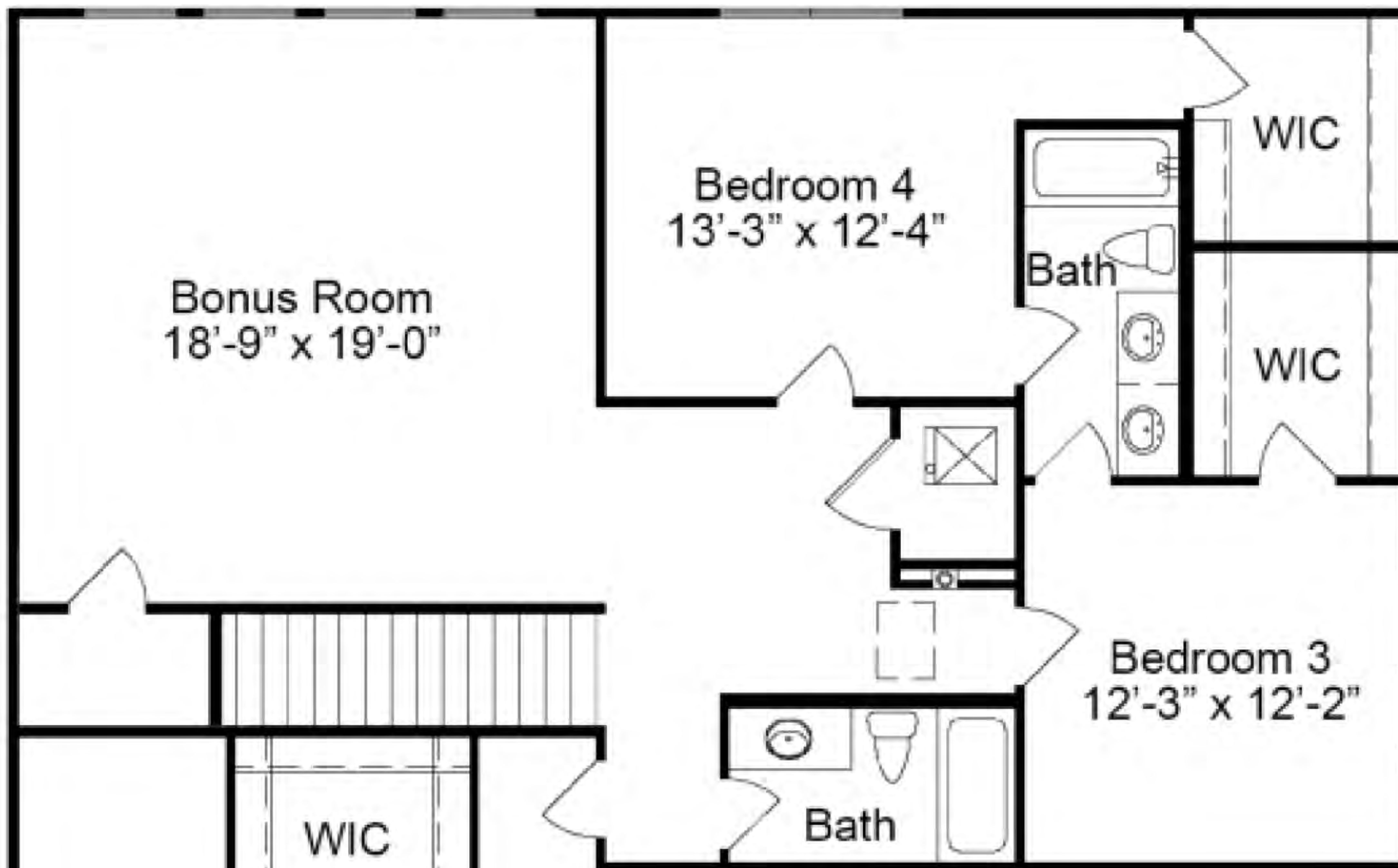
The Wyndham is a substantial 1.5-story home with a magnificent master suite on the main floor. The main floor also features an open concept kitchen, breakfast room and great room with fireplace, a formal dining room and study, laundry room, walk-in pantry and cook's bath. On the second floor, there are three more sizable bedrooms and a huge bonus room. Also included is a dual zoned HVAC. Options include a 2-story great room, hearth room and covered patio on the main floor, a finished lower level, and a princess suite, and Jack & Jill bath on the second floor.



FandFHomes.com  
Click on the Interactive Design Tool tab  
to virtually explore your dream home



# WYNDHAM SECOND FLOOR PLAN







ESTATE COLLECTION  
**THE WYNDHAM**  
 1.5-STORY

4 Beds | 3.5 Baths | 3 Car Garage | 3,752 sq ft

**FIRST FLOOR ENHANCEMENT OPTIONS**



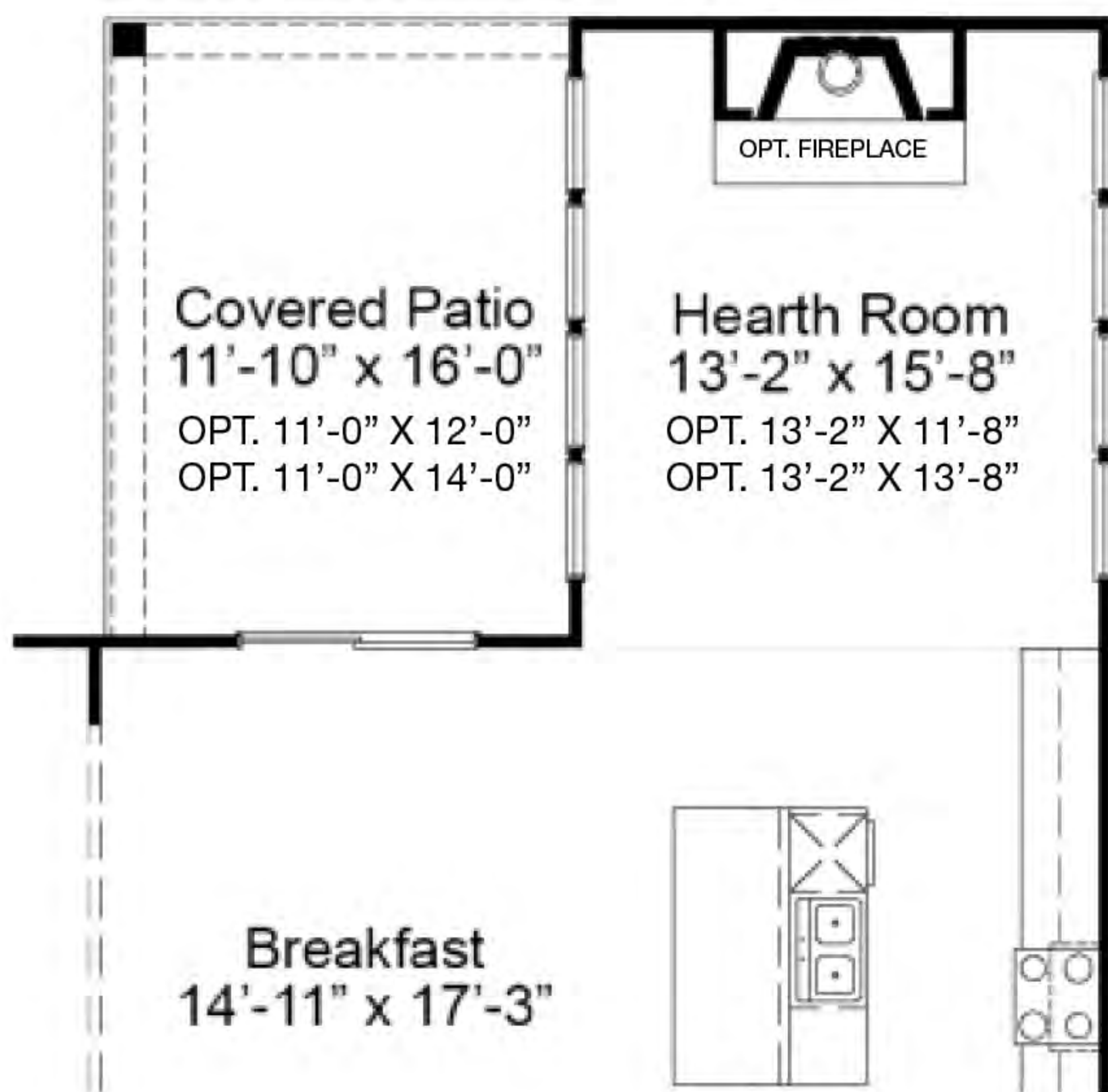
OPTIONAL SPA BATH 1



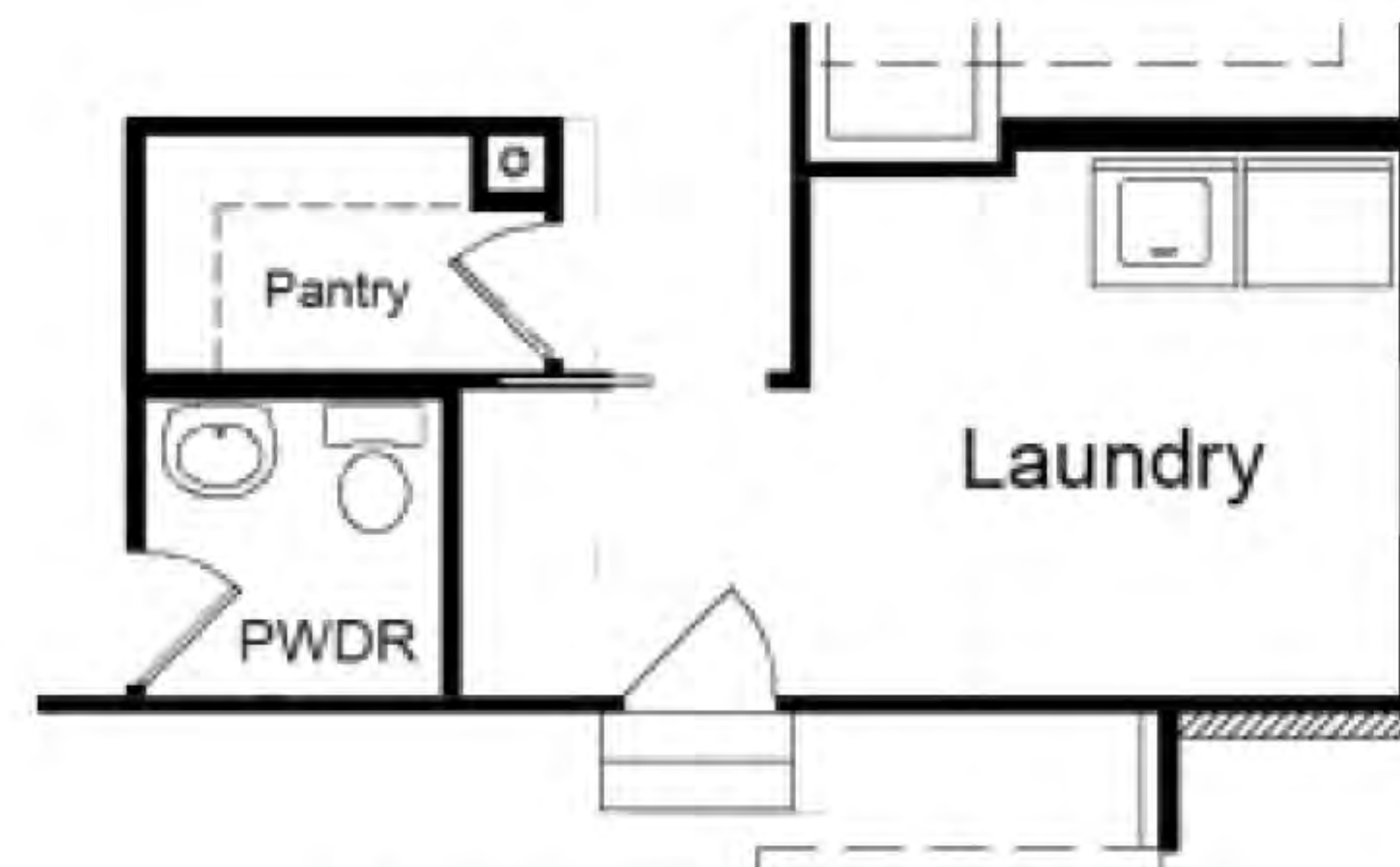
OPTIONAL SPA BATH 2



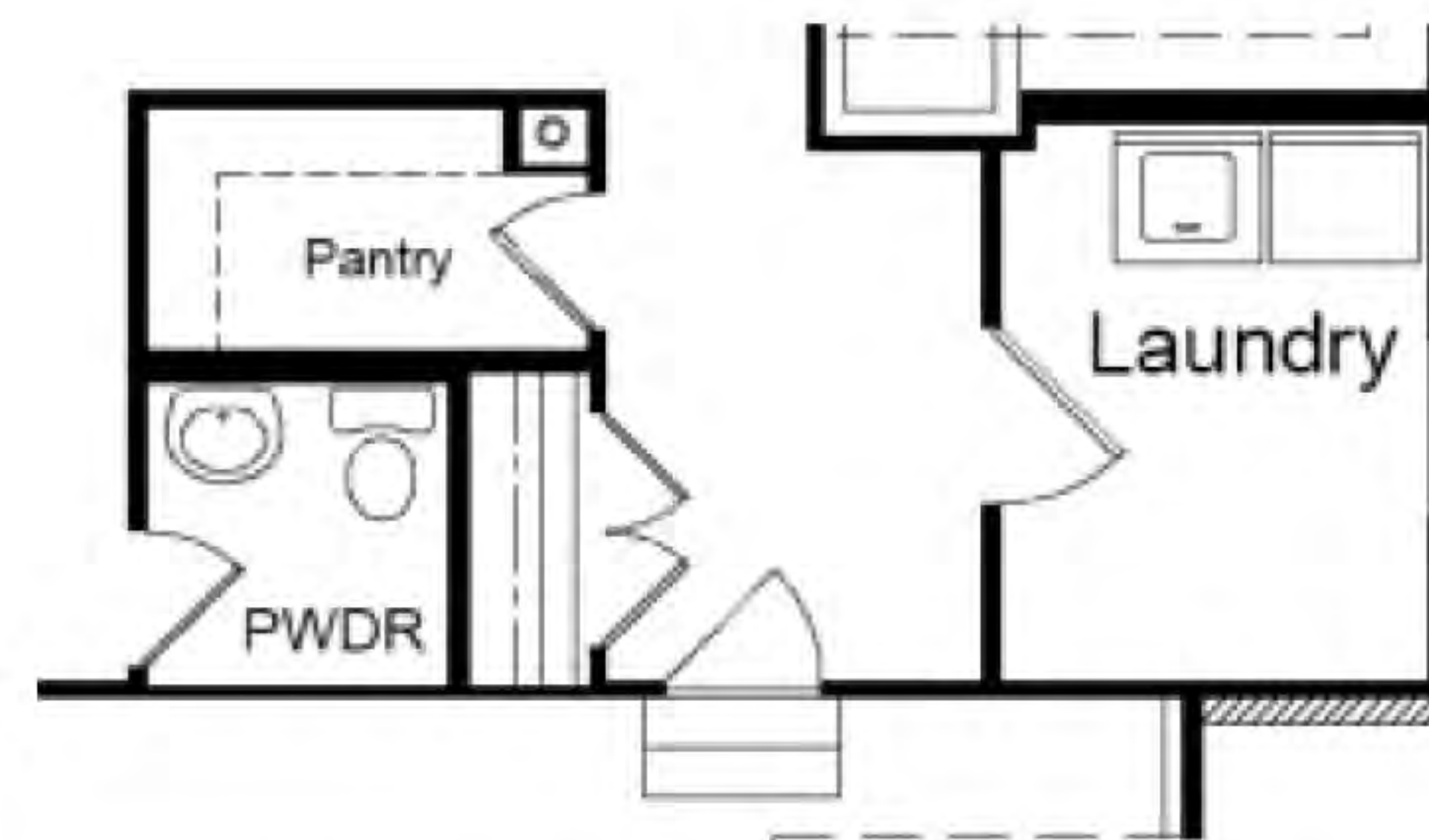
OPTIONAL LUXURY MASTER BATH



OPTIONAL HEARTH ROOM / COVERED PATIO



OPTIONAL FAMILY FOYER



OPTIONAL POWDER ROOM

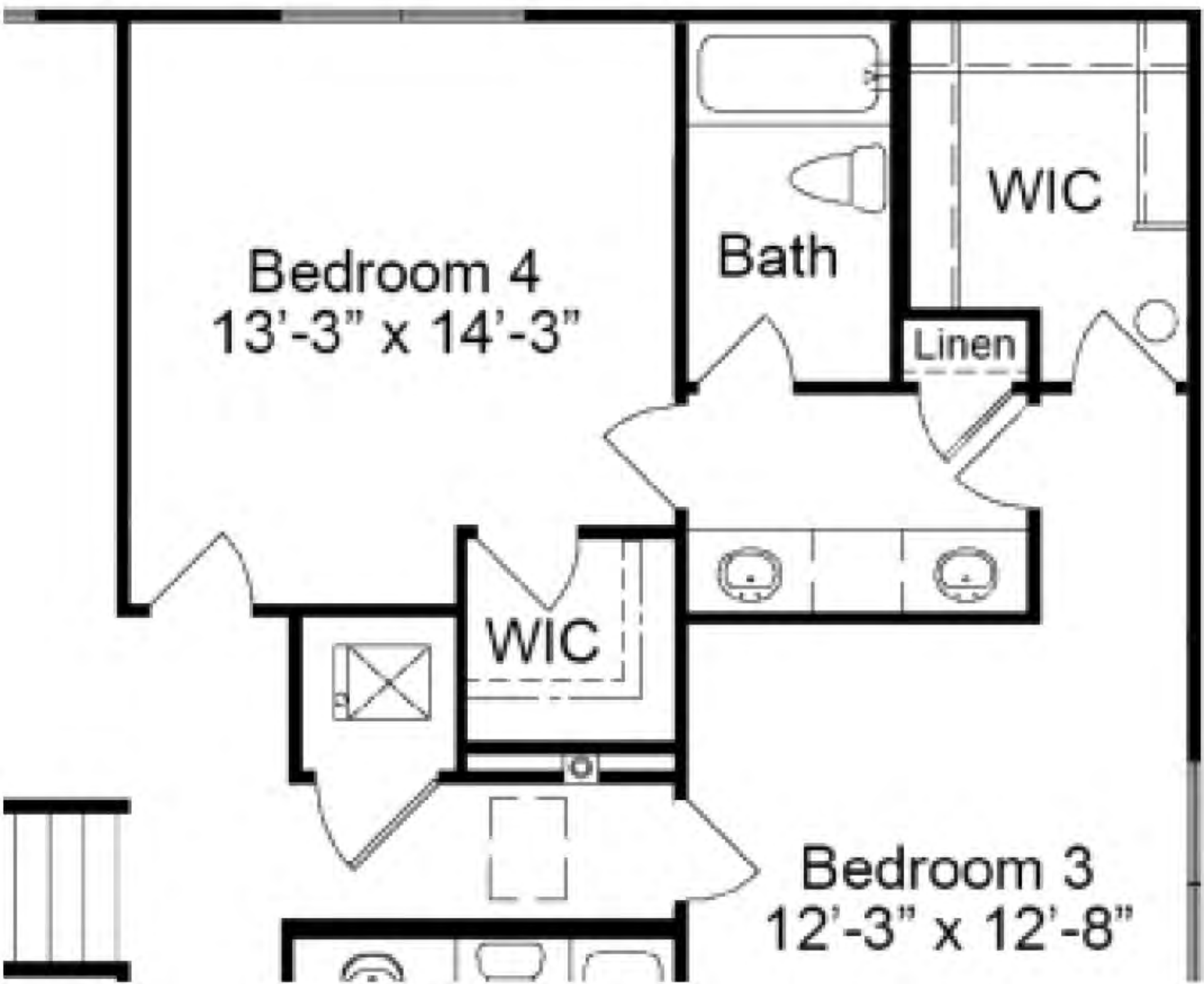




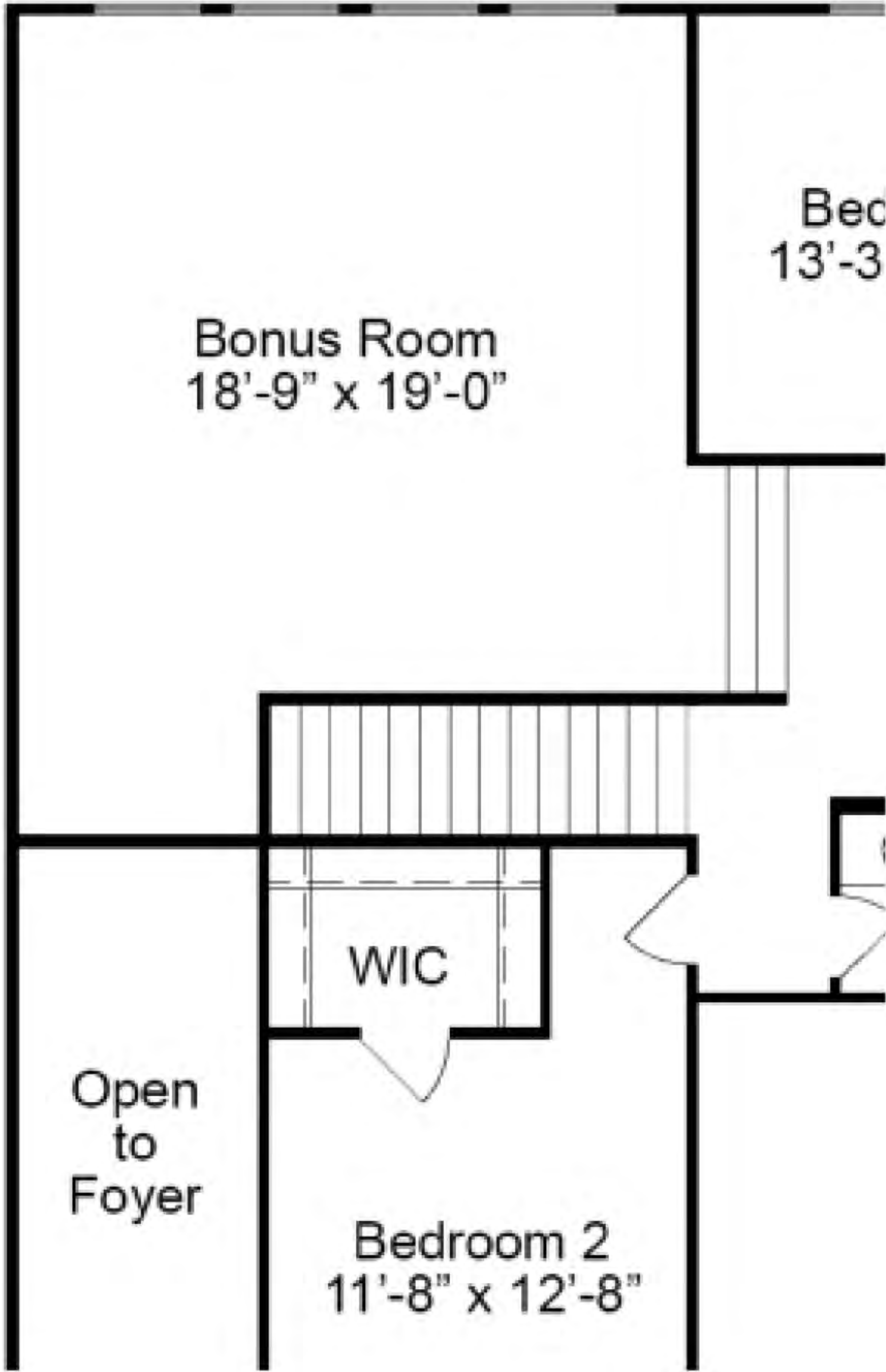
ESTATE COLLECTION  
**THE WYNDHAM**  
1.5-STORY

4 Beds | 3.5 Baths | 3 Car Garage | 3,752 sq ft

**SECOND FLOOR PLAN ENHANCEMENT OPTIONS**



OPTIONAL JACK & JILL BATH



OPTIONAL STEP-UP BONUS ROOM

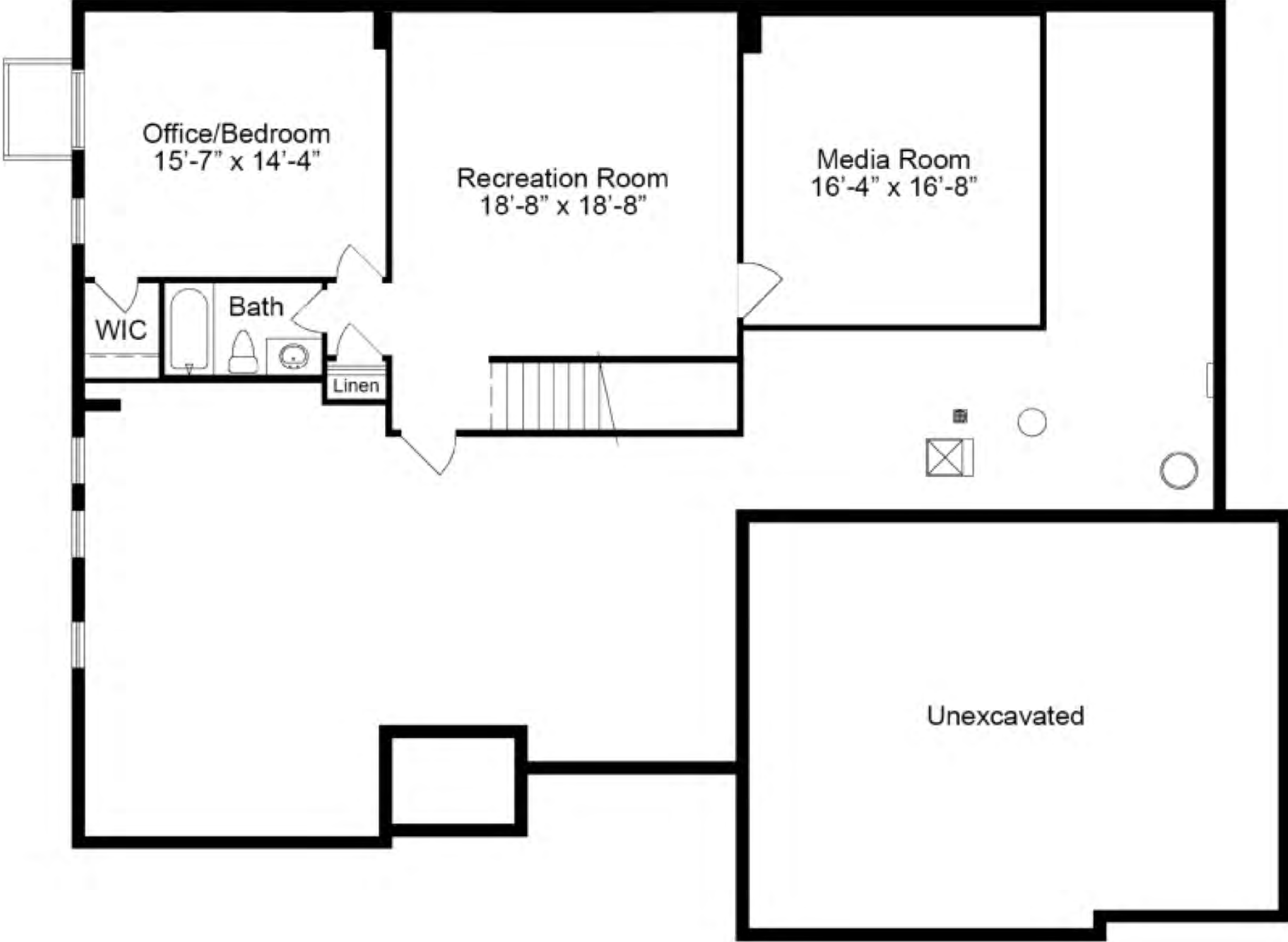




ESTATE COLLECTION  
**THE WYNDHAM**  
1.5-STORY

4 Beds | 3.5 Baths | 3 Car Garage | 3,752 sq ft

**WYNDHAM OPTIONAL FINISHED LOWER LEVEL**



Floor plans may show options not included in the base price. All dimensions are approximate and may vary with elevation. Please be sure to review actual blueprints with Community Sales Manager for complete details. Fischer & Frichtel Custom Homes has a policy of continuous improvements of products and reserves the right to make improvements or changes on products and prices without notice.