

fischer & frichtel **4**

A Homebuilding Legacy Since 1945



ESTATE COLLECTION

# THE WOODSIDE RANCH

---

3 Beds | 2 Baths | 3 Car Garage | 2,662 sq ft

---

\*The elevations on this brochure are an artist's conception and may vary slightly from actual construction.





ESTATE COLLECTION  
**THE WOODSIDE**  
RANCH

3 Beds | 2 Baths | 3 Car Garage | 2,662 sq ft

**ELEVATION OPTIONS**



Elevation II



Elevation III



Elevation IV



Elevation V



Elevation VI



Please be sure to review actual blueprints with Community Sales Manager for complete details. Fischer & Frichtel Custom Homes has a policy of continuous improvements of products and reserves the right to make improvements or changes on products and prices without notice.

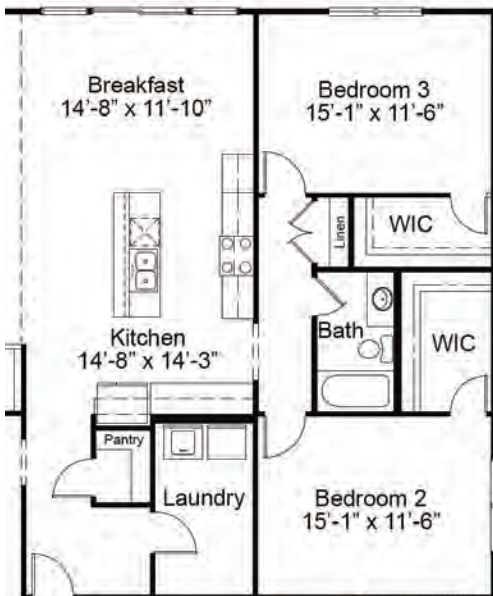




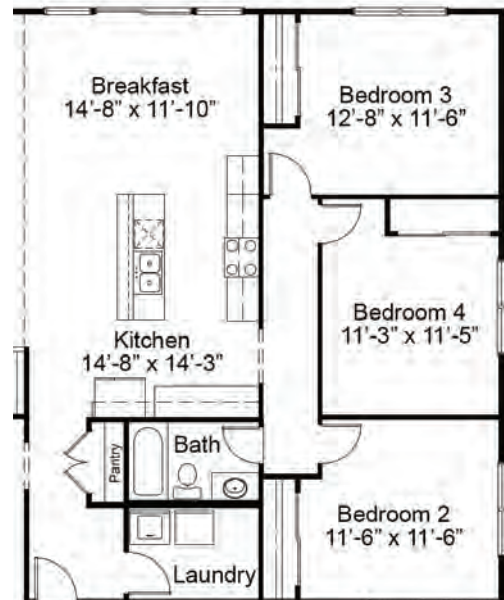
ESTATE COLLECTION  
**THE WOODSIDE**  
RANCH

3 Beds | 2 Baths | 3 Car Garage | 2,662 sq ft

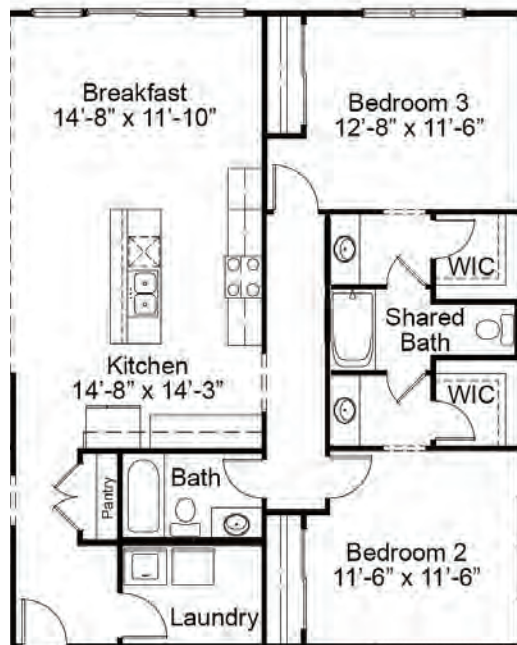
**ENHANCEMENT OPTIONS**



OPTIONAL 3-BEDROOM PLAN

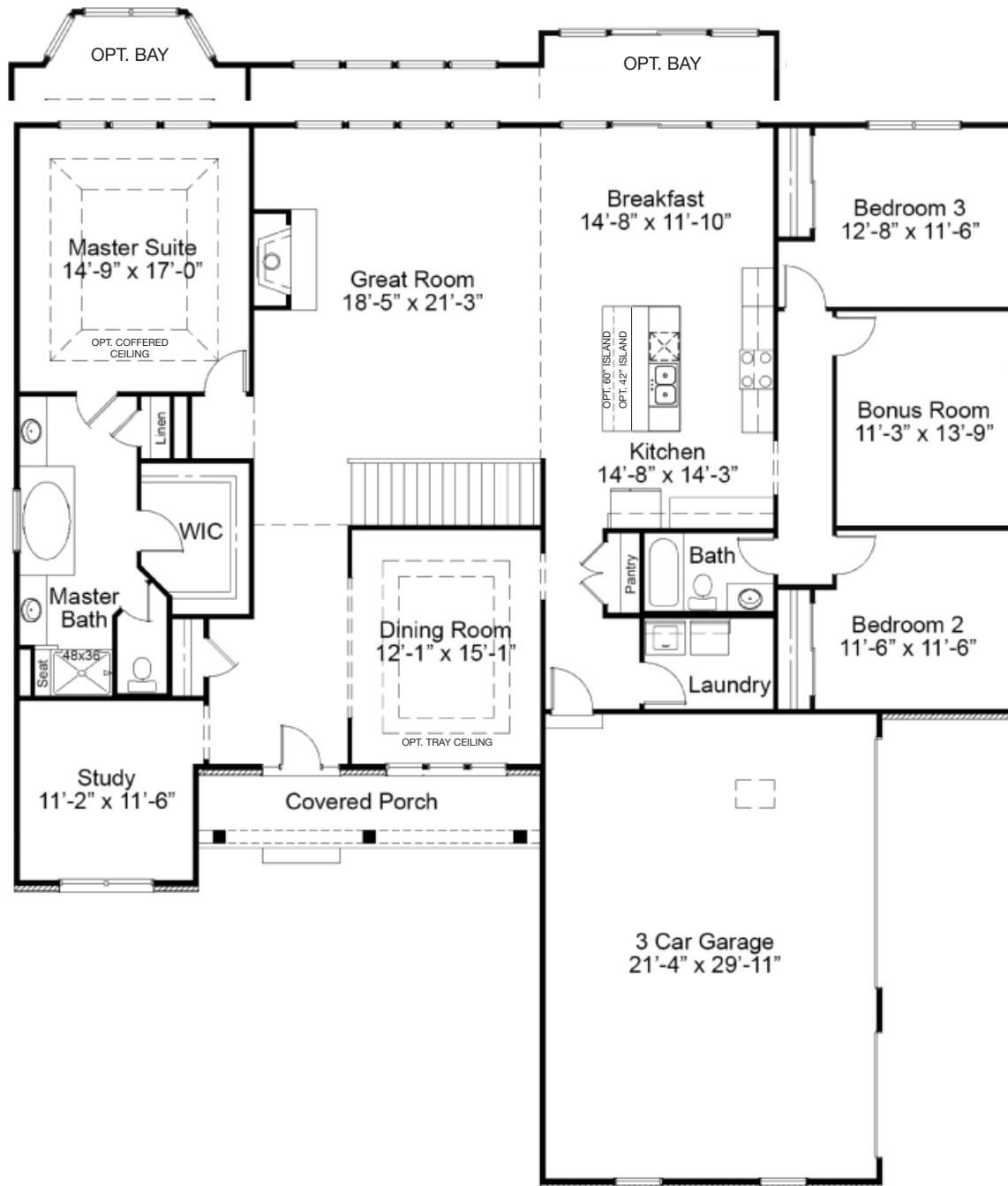


OPTIONAL 4-BEDROOM PLAN



OPTIONAL JACK AND JILL BATH

# WOODSIDE FIRST FLOOR PLAN



## THE WOODSIDE

The Woodside is a stunning ranch-style home with a spacious master suite on one end, and two bedrooms on the other end for enhanced privacy. The open concept kitchen, breakfast room and great room is great for gatherings with family and friends, while a separate dining room, study and large laundry room provide maximum comfort and convenience. Options such as a hearth room and powder room may be added to the main living area. A fourth bedroom, Jack & Jill bath, a hearth room, covered patio and a finished lower level may also be added to tailor this home for a larger family.



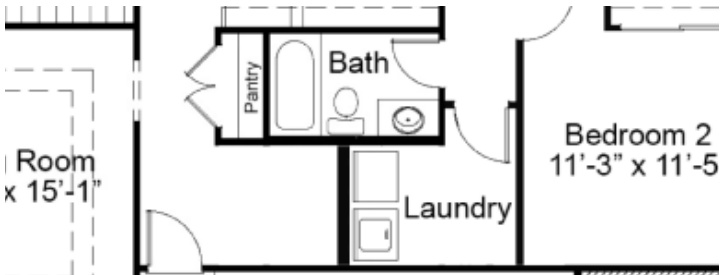
[FandFHomes.com](http://FandFHomes.com)

Click on the Interactive Design Tool tab  
to virtually explore your dream home

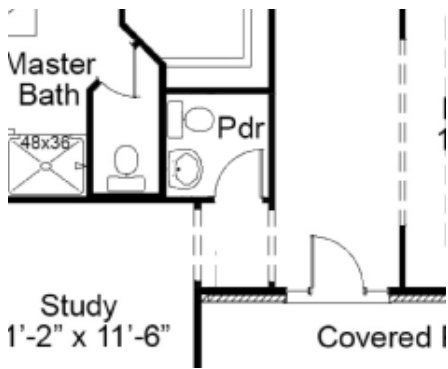
# WOODSIDE FIRST FLOOR ENHANCEMENT OPTIONS



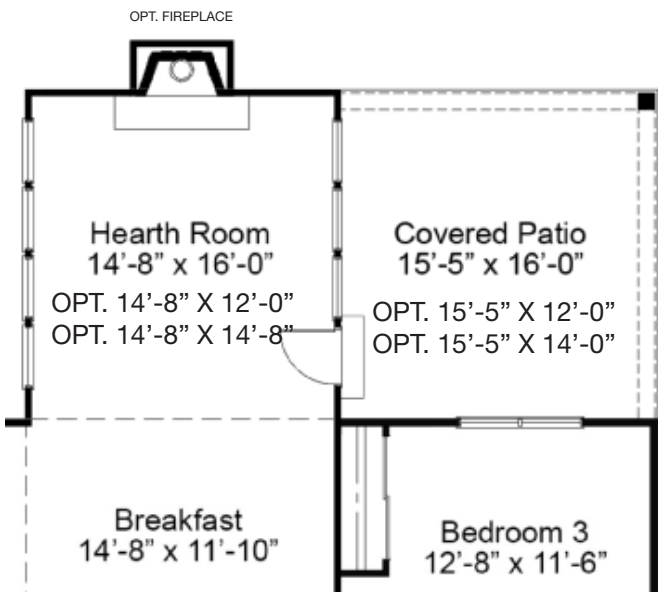
OPTIONAL FAMILY FOYER 1



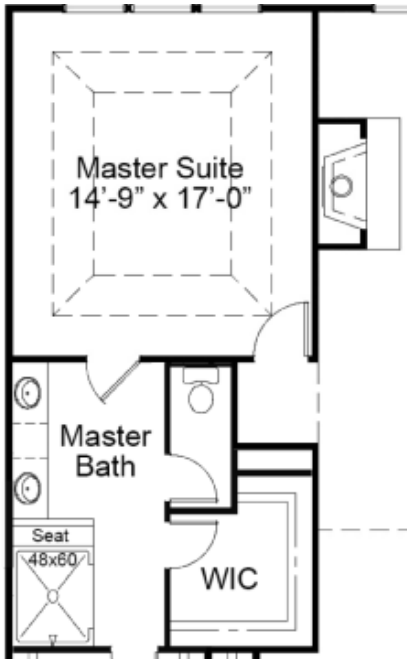
OPTIONAL FAMILY FOYER 2



OPTIONAL POWDER ROOM



OPTIONAL HEARTH ROOM & COVERED PATIO



OPTIONAL SPA MASTER BATH

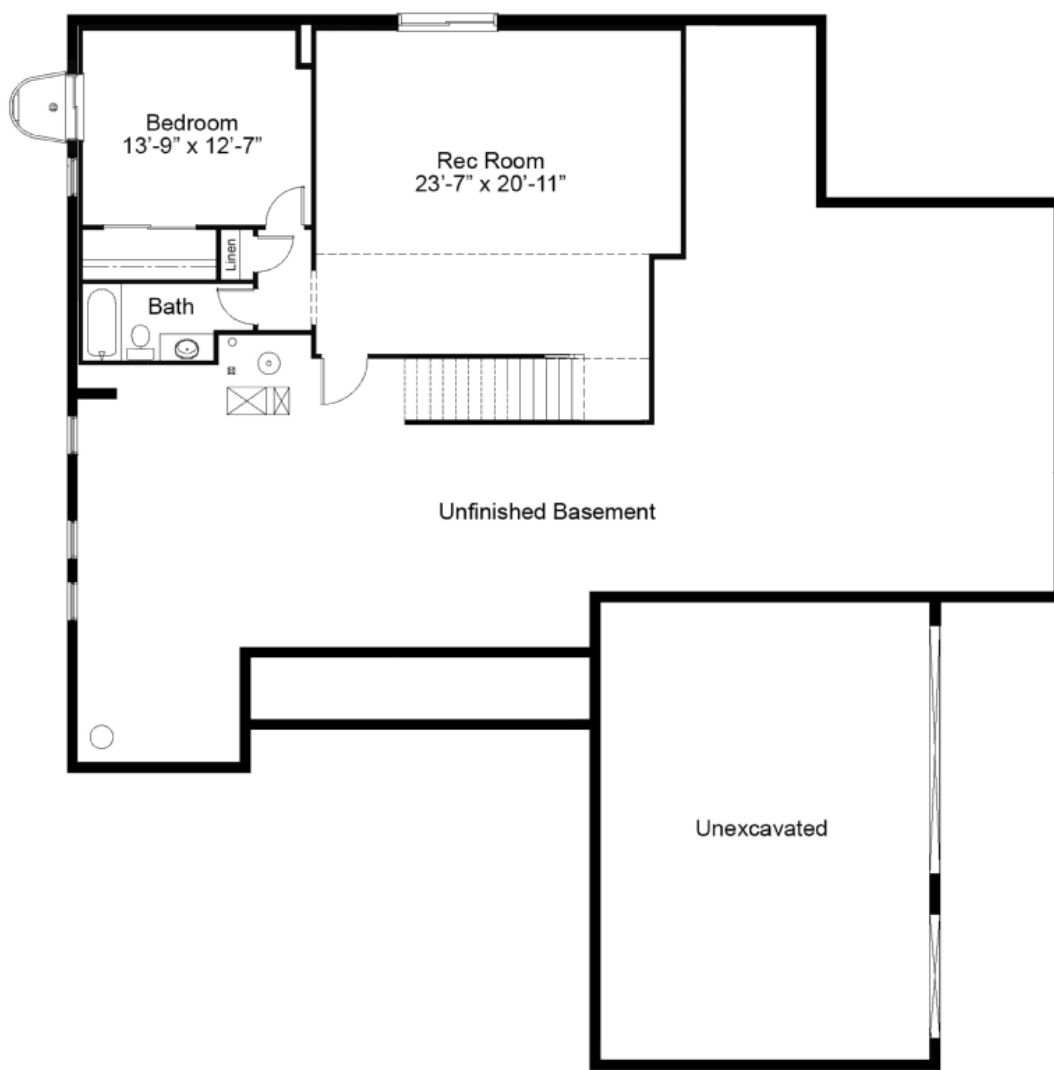
**fischer & frichtel**

A Homebuilding Legacy Since 1945

ESTATE COLLECTION  
**THE WOODSIDE**  
RANCH

3 Beds | 2 Baths | 3 Car Garage | 2,662 sq ft

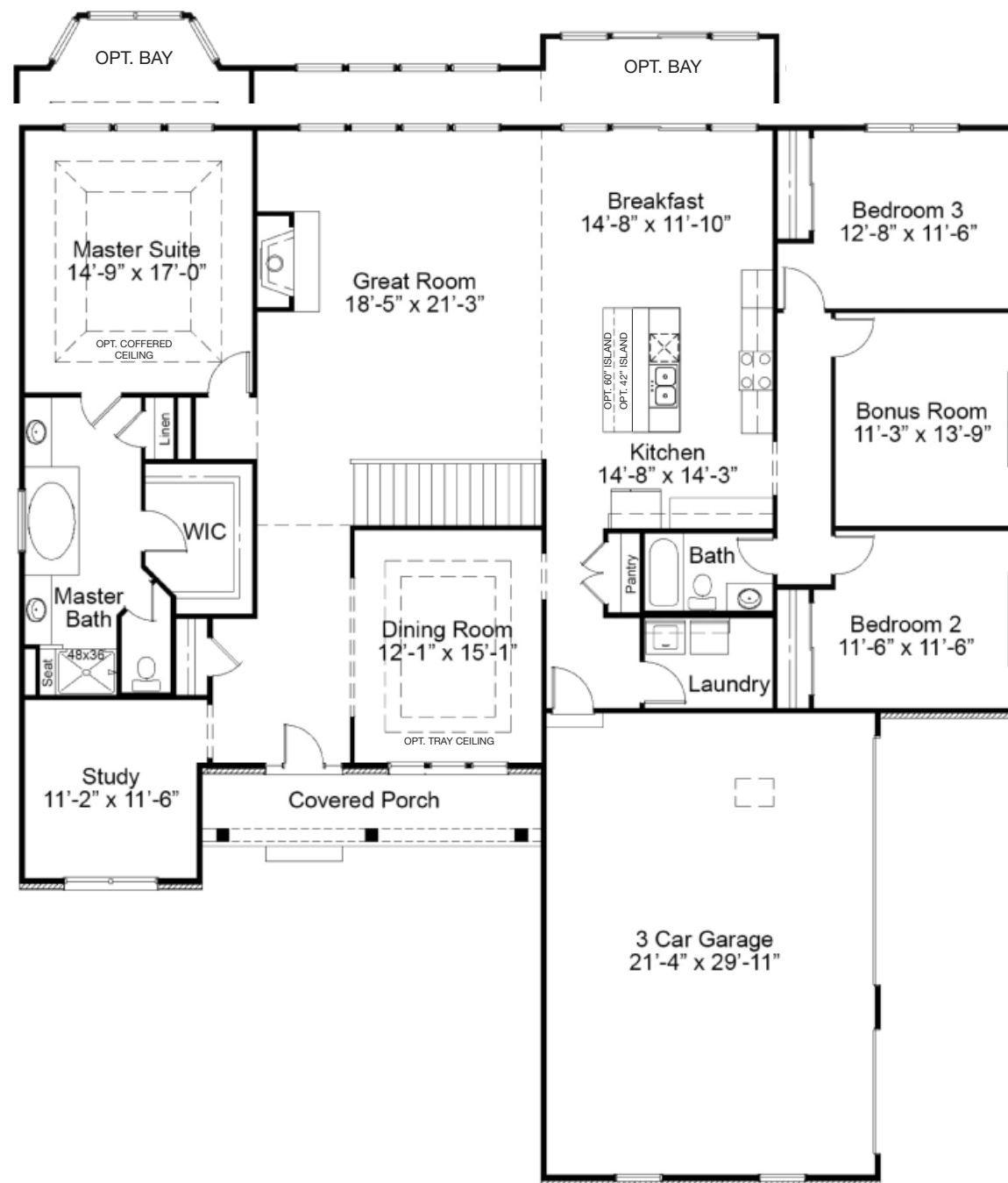
**WOODSIDE OPTIONAL FINISHED LOWER LEVEL**



Floor plans may show options not included in the base price. All dimensions are approximate and may vary with elevation. Please be sure to review actual blueprints with Community Sales Manager for complete details. Fischer & Frichtel Custom Homes has a policy of continuous improvements of products and reserves the right to make improvements or changes on products and prices without notice.

REV 1-25-2022

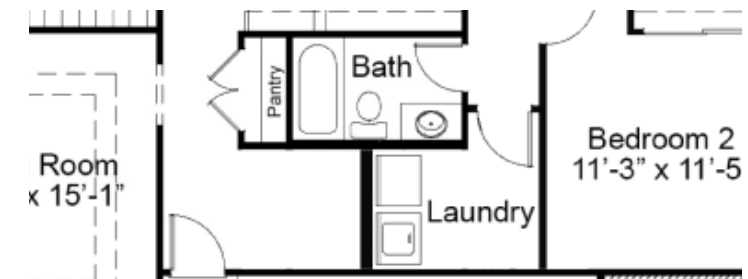
## WOODSIDE FIRST FLOOR PLAN



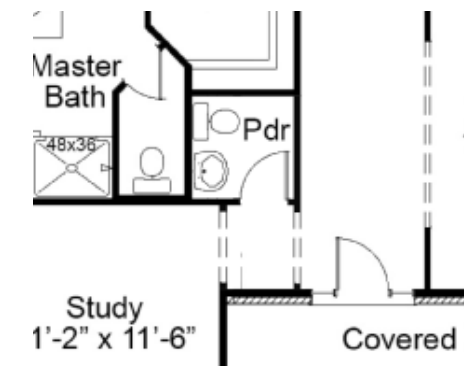
## WOODSIDE FIRST FLOOR ENHANCEMENT OPTIONS



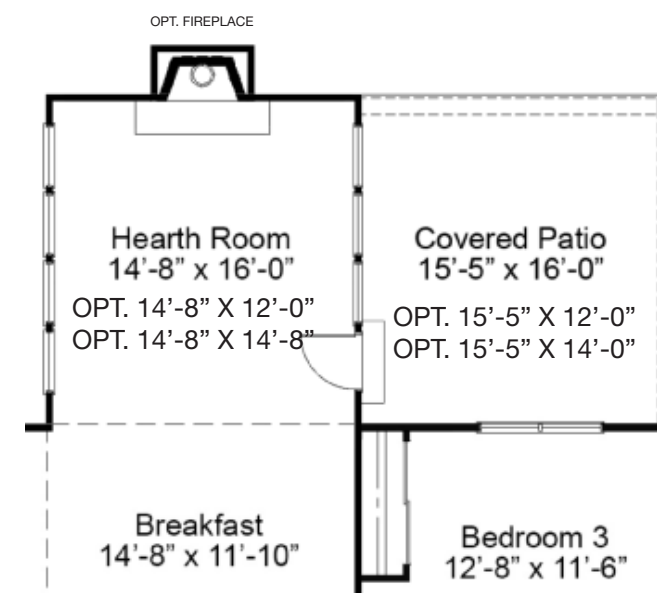
OPTIONAL FAMILY FOYER 1



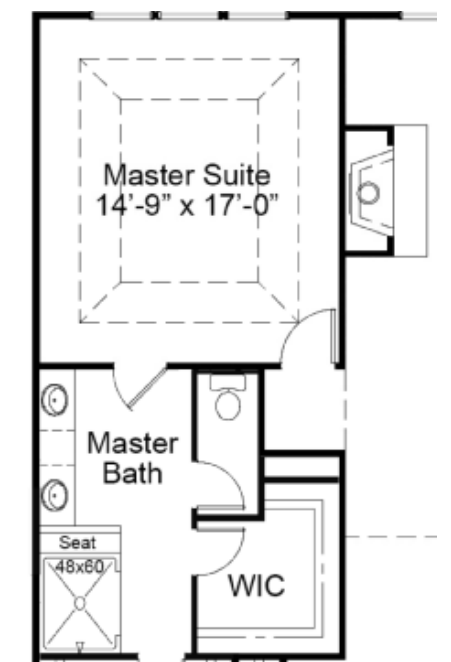
OPTIONAL FAMILY FOYER 2



OPTIONAL POWDER ROOM



OPTIONAL HEARTH ROOM & COVERED PATIO



OPTIONAL SPA MASTER BATH

## THE WOODSIDE

The Woodside is a stunning ranch-style home with a spacious master suite on one end, and two bedrooms on the other end for enhanced privacy. The open concept kitchen, breakfast room and great room is great for gatherings with family and friends, while a separate dining room, study and large laundry room provide maximum comfort and convenience. Options such as a hearth room and powder room may be added to the main living area. A fourth bedroom, Jack & Jill bath, a hearth room, covered patio and a finished lower level may also be added to tailor this home for a larger family.



[FandFHomes.com](http://FandFHomes.com)  
Click on the Interactive Design Tool tab  
to virtually explore your dream home