

fischer & frichtel 

A Homebuilding Legacy Since 1945



COTTAGE COLLECTION

THE WINDSOR

2-STORY

3 Beds | 2.5 Baths | 2 Car Garage | 1,422 sq ft

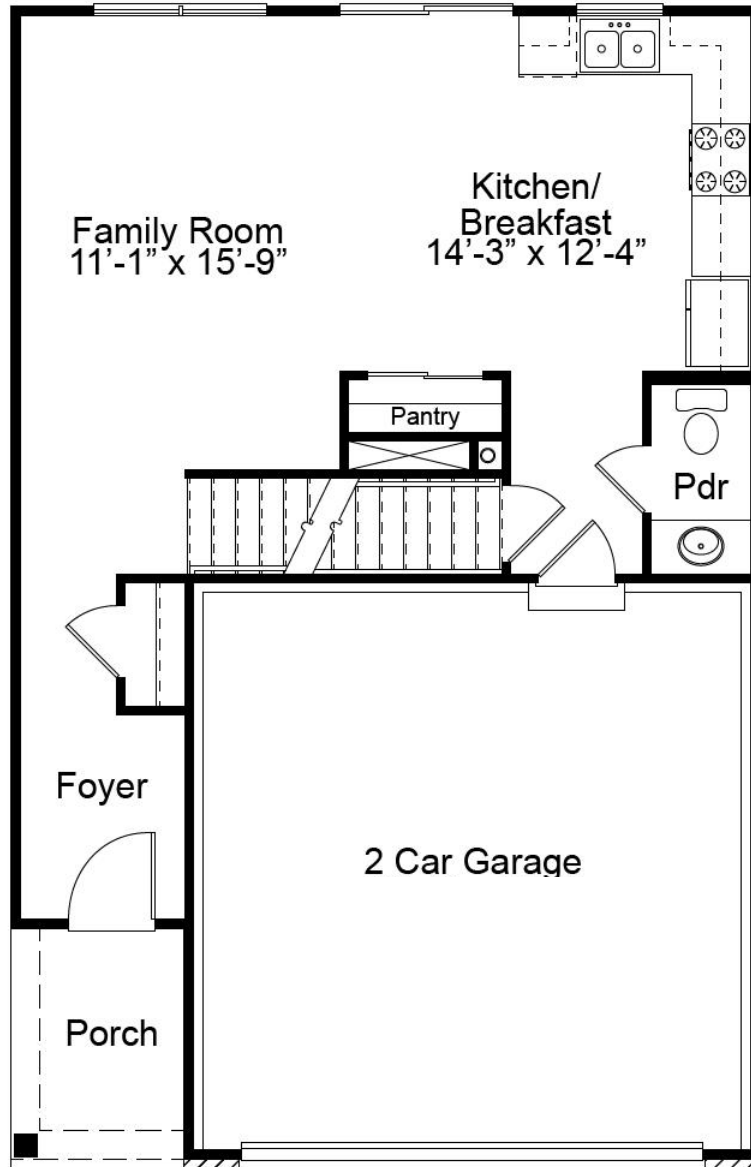
*The elevations on this brochure are an artist's conception and may vary slightly from actual construction.

ELEVATION OPTIONS



Please be sure to review actual blueprints with Community Sales Manager for complete details. Fischer & Frichtel Custom Homes has a policy of continuous improvements of products and reserves the right to make improvements or changes on products and prices without notice.

WINDSOR FIRST FLOOR PLAN



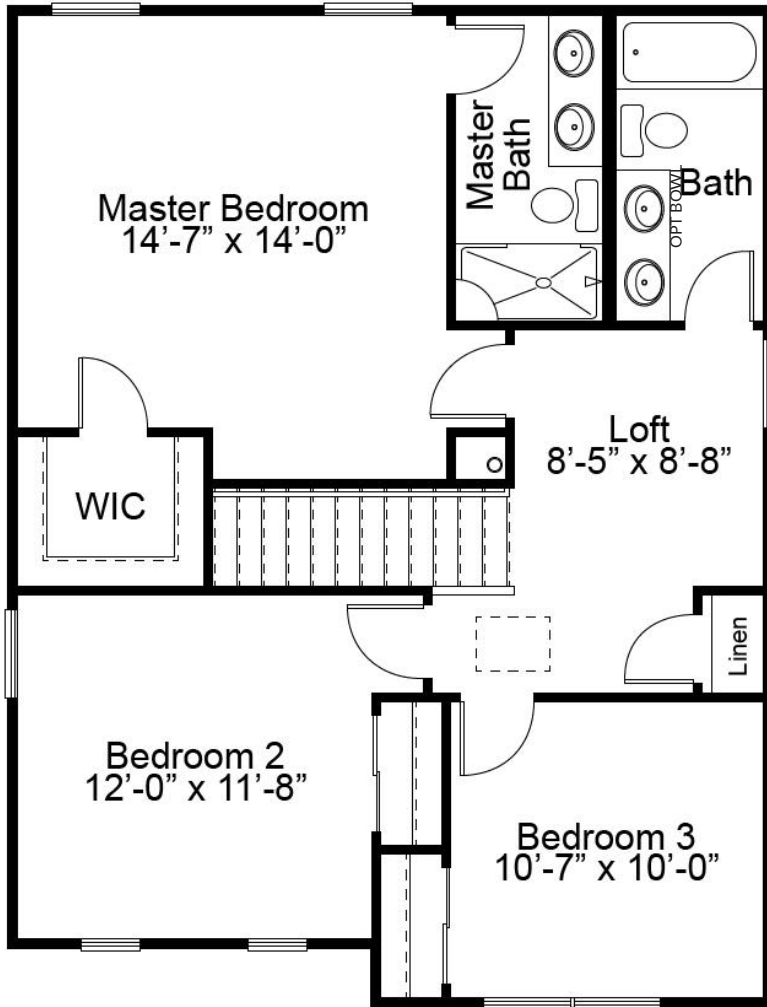
THE WINDSOR

The Windsor is a 2-story plan with 3 bedrooms and 2.5 baths. The main floor living area features an open concept kitchen, dining and living room and a powder room—making it the perfect spot for family time and entertaining. The second floor features a spacious master suite with walk-in closet, an open loft area, two additional bedrooms and a shared hall bath. For additional convenience, there is an optional second floor laundry.



FandFHomes.com
Click on the Interactive Design Tool tab
to virtually explore your dream home

WINDSOR SECOND FLOOR PLAN



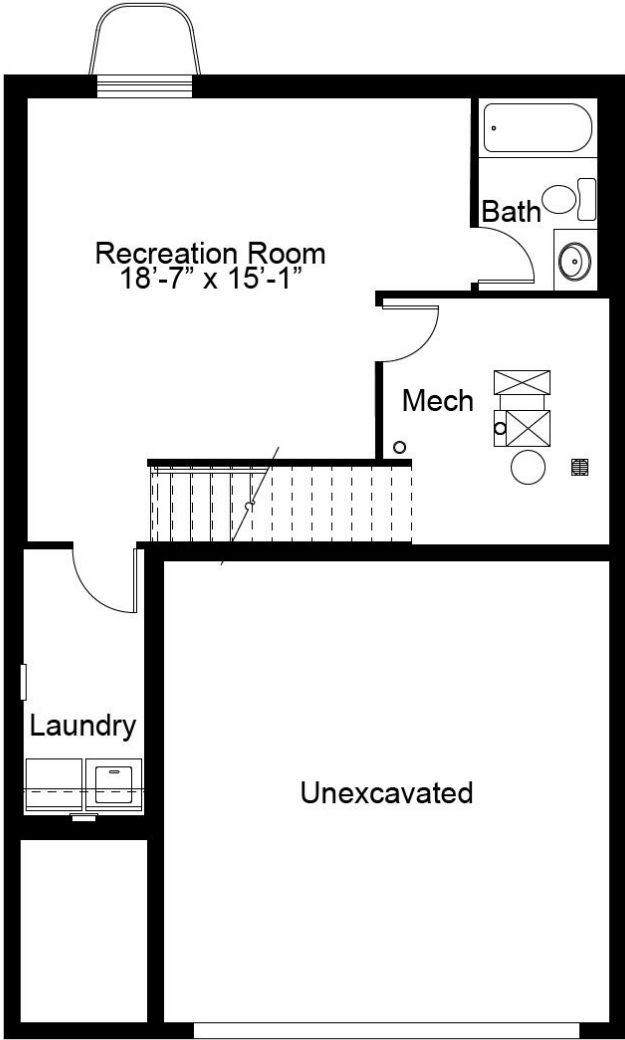
OPTIONAL SECOND FLOOR LAUNDRY



COTTAGE COLLECTION
THE WINDSOR
2-STORY

3 Beds | 2.5 Baths | 2 Car Garage | 1,422 sq ft

WINDSOR OPTIONAL FINISHED LOWER LEVEL



Floor plans may show options not included in the base price. All dimensions are approximate and may vary with elevation. Please be sure to review actual blueprints with Community Sales Manager for complete details. Fischer & Frichtel Custom Homes has a policy of continuous improvements of products and reserves the right to make improvements or changes on products and prices without notice.