

fischer & frichtel

A Homebuilding Legacy Since 1945



COTTAGE COLLECTION

THE DEVONSHIRE

2-STORY

3 Beds | 2.5 Baths | 2 Car Garage | 1,629 sq ft

*The elevations on this brochure are an artist's conception and may vary slightly from actual construction.

ELEVATION OPTIONS



Base Elevation



Elevation I



Elevation II



Elevation III



Elevation IV



Modern I



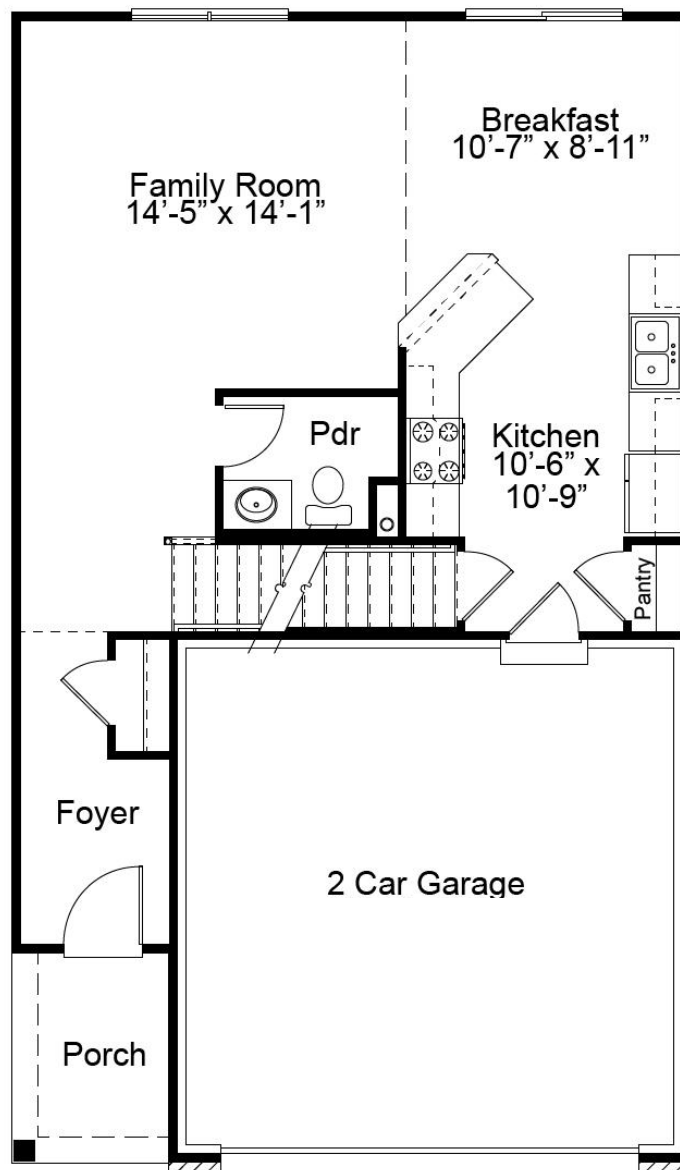
Modern II



REV 5-23-2024

Please be sure to review actual blueprints with Community Sales Manager for complete details. Fischer & Fichtel Custom Homes has a policy of continuous improvements of products and reserves the right to make improvements or changes on products and prices without notice.

DEVONSHIRE FIRST FLOOR PLAN



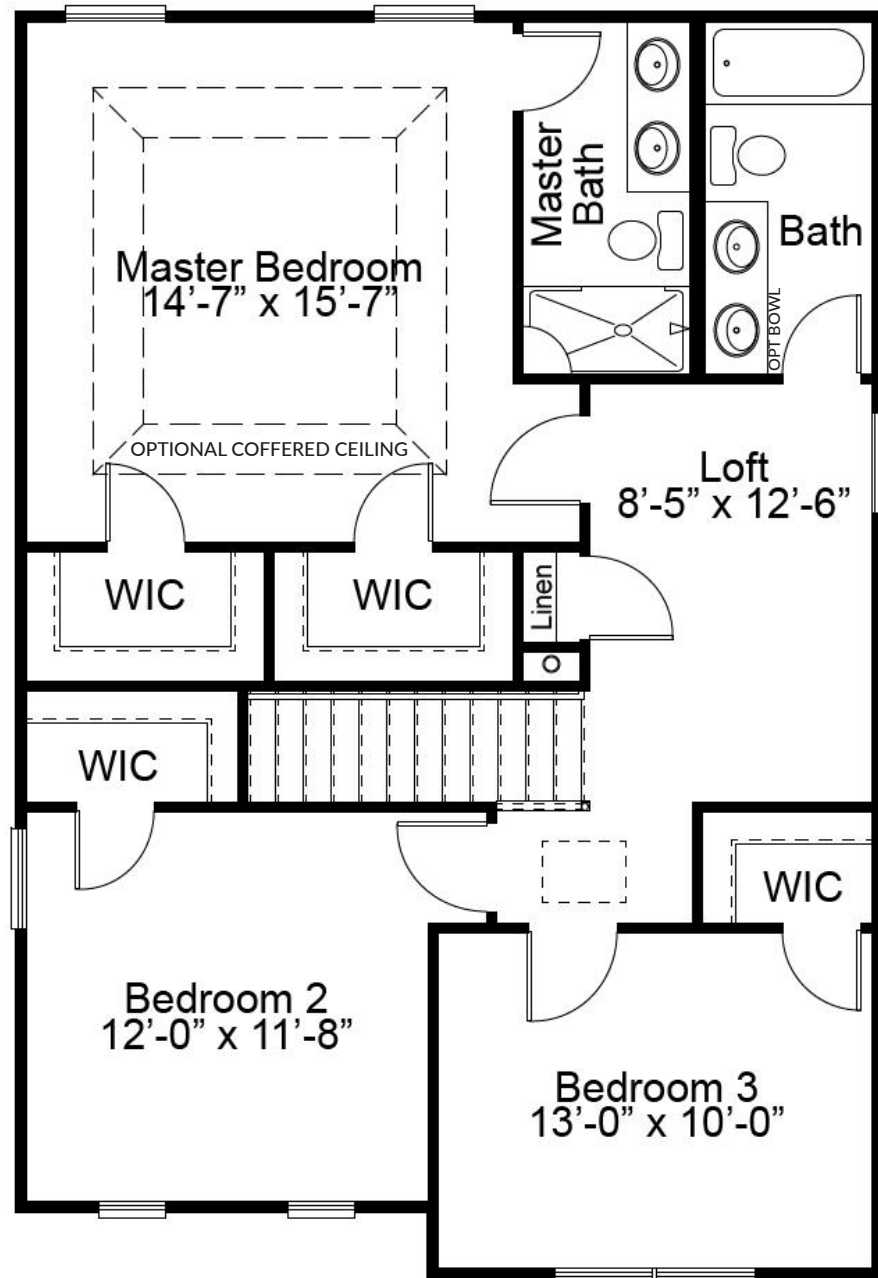
THE DEVONSHIRE

The Devonshire is a 2-story plan with 3 bedrooms and 2.5 baths. The main floor living area features a spacious open concept kitchen, dining and living room and a powder room—all perfect for family time or entertaining. The second floor features a large master suite with dual walk-in closets, an open loft area. Two additional bedrooms have walk-in closets and a shared hall bath. Enhancement options for this fantastic home include a modified kitchen layout, second floor laundry and finished lower level.



FandFHomes.com
Click on the Interactive Design Tool tab
to virtually explore your dream home

DEVONSHIRE SECOND FLOOR PLAN

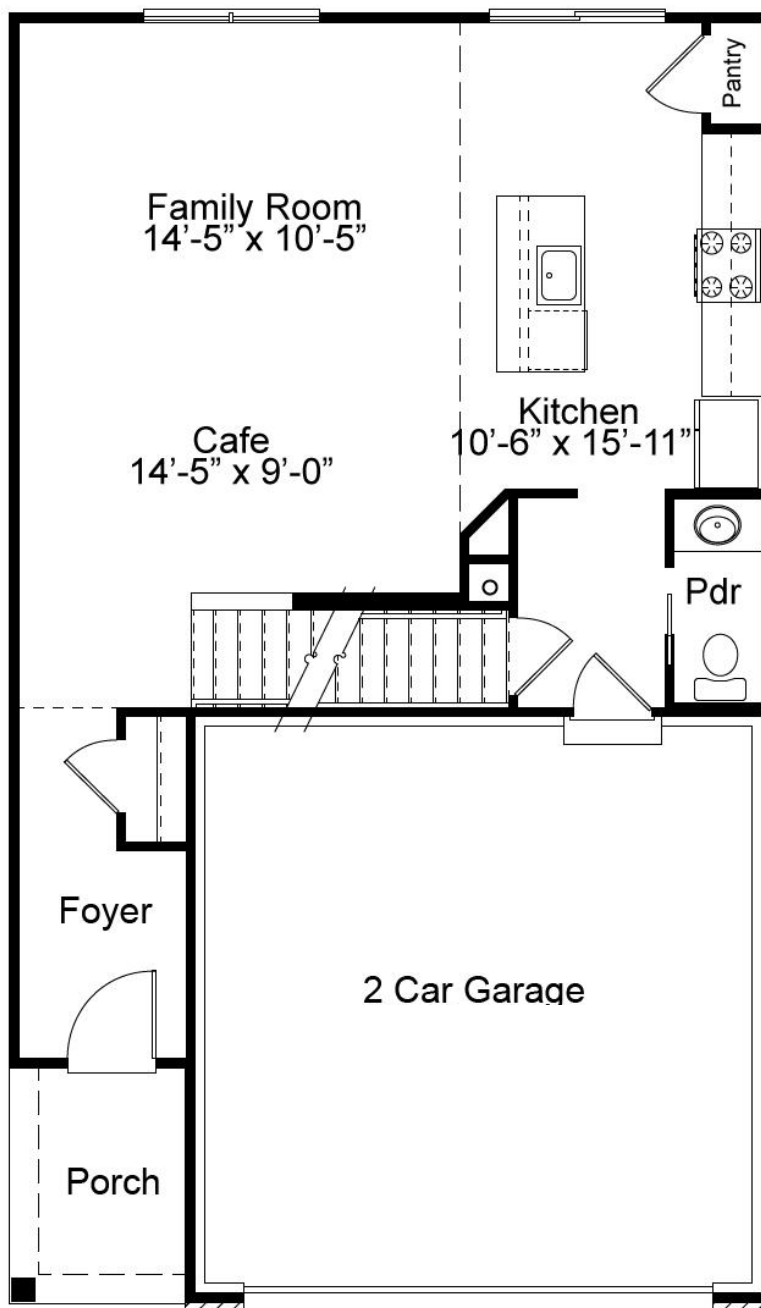




COTTAGE COLLECTION
THE DEVONSHIRE
2-STORY

3 Beds | 2.5 Baths | 2 Car Garage | 1,629 sq ft

OPTIONAL FIRST FLOOR W/ LUXURY KITCHEN



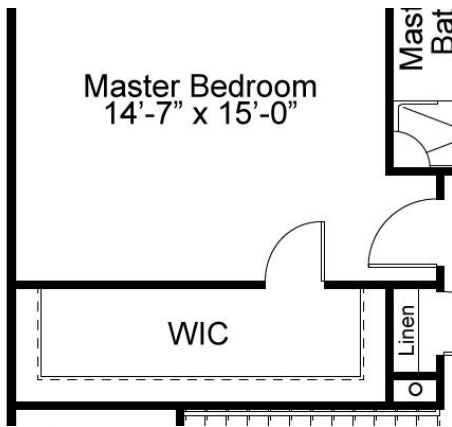


COTTAGE COLLECTION
THE DEVONSHIRE
 2-STORY

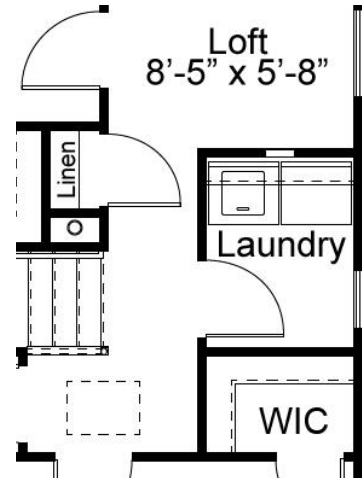
3 Beds | 2.5 Baths | 2 Car Garage | 1,629 sq ft



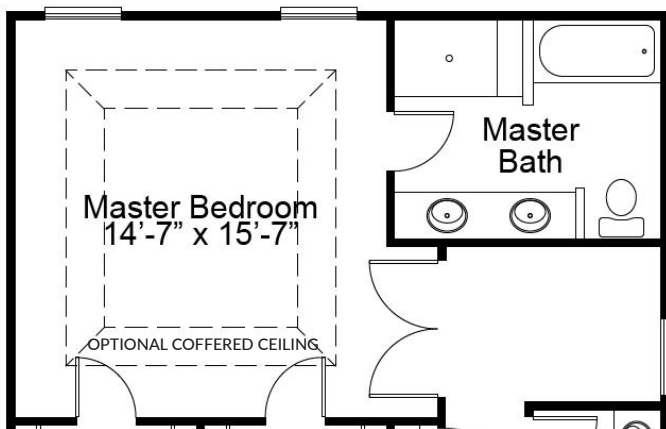
SECOND FLOOR ENHANCEMENT OPTIONS



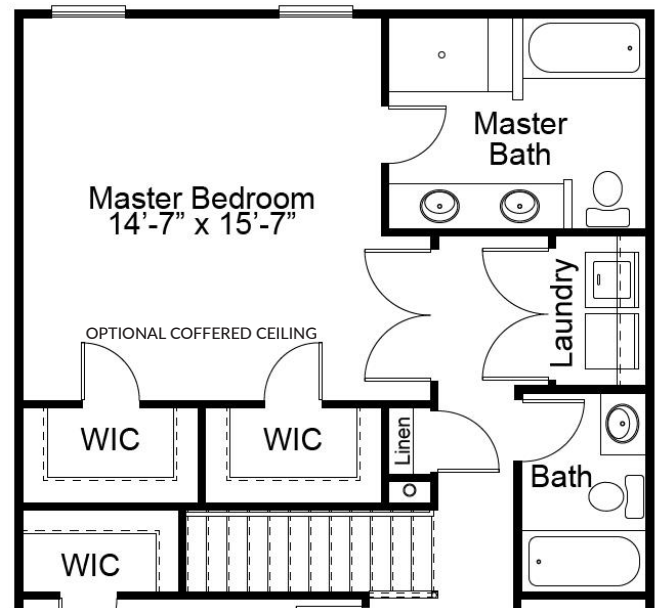
OPTIONAL MASTER BEDROOM CLOSET



OPTIONAL SECOND FLOOR LAUNDRY



OPTIONAL LUXURY BATH



OPTIONAL SECOND FLOOR LAUNDRY WITH
 LUXURY MASTER BATH

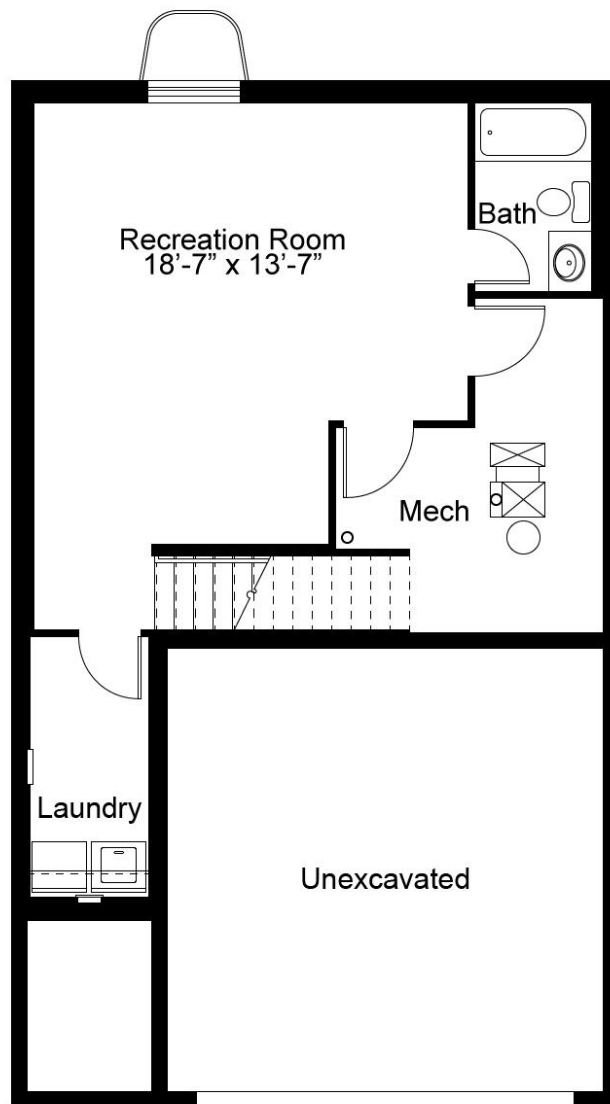


COTTAGE COLLECTION
THE DEVONSHIRE
2-STORY

3 Beds | 2.5 Baths | 2 Car Garage | 1,629 sq ft



DEVONSHIRE OPTIONAL FINISHED LOWER LEVEL



Floor plans may show options not included in the base price. All dimensions are approximate and may vary with elevation. Please be sure to review actual blueprints with Community Sales Manager for complete details. Fischer & Frichtel Custom Homes has a policy of continuous improvements of products and reserves the right to make improvements or changes on products and prices without notice.

REV 10-25-2021